

MechWorks PDM R17

Release Notes

Service Pack: 2.19 Build: 20210226

Bugs fixing

- 20210223 - MwLicense Manager: in case of borrowed license, there was a problem in DBAlone license evaluation
- 20210204 - Working Set: Creating a working set in the query page with more than 500 elements and sorting the working set by a column before removing some number of rows made the grid miscalculate the number of elements in the set.
- 20210129 - Setup: during the upgrade of the PDM version or the change of installed PDM products, the setup of PDM changed the value registry keys INSTALL_LANGUAGE wrapping the language XX with ="XX"
- 20210125 - Scripting: in certain cases the REPLICATION_PARTNERS.SPT script was raising an unwanted messagebox after having submitted a new replication partner in the specific form.
- 20210122 - DBSolidEdge: Under certain conditions, temporary standard part files (documents with filename beginning with "~varmod") were wrongly saved in the PDM
- 20210119 - DBDraftSight: solved installation dependencies problems
- 20210115 - Scripting: the execution of Revision_output_Pdf_booklet.vbs script was not performed properly
- 20201214 - Previews of SolidWorks file for .NET components and Web Client: some files would fail to display

Service Pack: 2.18 Build: 20201209

Bugs fixing

- 20201211 - Web Client R17 Updater: now updates also older versions (5.1.0.2). The updater is a smaller setup used to update the server side components.
- 20201210 - Take Ownership: Having the option Remote Access Mode option [X] Take/Release ownership on Increment Revision/Approve enabled, under certain circumstances, the ownership was not returned to the original owner approving the record
- 20201209 - Recursive Approve: with the enhancement "20200220 - Recursive Approve: Added a warning at the beginning of the process checking if all the selected assemblies are eligible to be approved. If not, the recursive approve will be immediately denied and an explicative warning will be shown" there was a breaking behavior since it was no more possible to approve allowed documents when at least one document isn't eligible for the approval. With this fix, the warning message has been changed to a confirmation dialog: answering 'no' the recursive approval process stops, answering 'yes' the approval is performed as far as possible
- 20201117 - Scripting: the NEVER_INSERT_SW_ENVELOP_COMPONENT option was not accessible using DBWShell GetOption/Option
- 20201111 - Scripting: Dataentr.LIB fixed an error overflow scenario that caused a cInt error
- 20201110 - Scripting: the DRAWING_BOM_SHOW_EXTRACOLUMN option was not accessible using DBWShell GetOption/Option
- 20201030 - SolidWorks 2020: Options->Environment->[X] Use DBWorks for Searching Solidworks Components: due to a behavior change in the SolidWorks 2020 API, the DBWorks mini browser was no longer popping up when inserting a Part into another Part, for creating a derived Part
- 20201029 - Tree: working with the Options->User Interface->Tree->Show description in the Trees->[X] Highlight 'fake' components and quantities in the Tree, the fake status was lost in case of PARENT_CHILD_MAKE_BUY = NO_BOM
- 20201027 - Shell API: It is now possible to get and set the value of the option SAVE_ONLY_PARENT_CONFIGURATIONS_OF_DERIVED_CONFIGURATIONS_LIKE_MODE via shell and .NET API.
- 20201026 - Revisions: Recursive operators: under some circumstances, the linked drawing documents are inserted multiple times causing inconsistencies in document management
- 20201023 - Drag&Drop: Drag&Drop a CAD file into the browser registers the file and now automatically check-in the file if the option Open/Save -> Save as -> [X] Automatic check-in after a DBWorks 'Save as ...' is flagged and automatically check-out the file if the option Open/Save -> Save as -> [X] Automatic check-out after the check-in is flagged.
- 20201023 - Category Maker: a high numeric value in the clipboard would crash the RMB popup menu from a category
- 20201022 - Word Add-In: during Check-In operation, rules from Revision Outputs were not applied
- 20201019 - DBDraftSight: options for title block management were not visible

Service Pack: 2.17 Build: 20201016

Bugs fixing

- 20201015 - DBWAclServer: it is fixed a problem of wrong server name assignment causing redundant client/server communication
- 20201013 - DBInventor: it is fixed a crash happening when opening an assembly in Express-Mode under some circumstances
- 20201006 - Remote access: working with Shared Projects, it is fixed a problem causing a wrong message to be displayed when trying to modify project data
- 20200930 - Fake Documents: under certain conditions, performing a Drag&Drop of fake documents, the fake status was lost
- 20200925 - DBSolidEdge: Standard Parts added with Part Finder weren't following AutoCheckIn/CheckOut operations
- 20200924 - Excel BOM: a buy list of a project with all items would return wrong quantities
- 20200915 - SolidWorks Integration: under certain conditions, the Read-Only document notification dialog was displayed redundantly, causing issues on document management
- 20200910 - MwPDMAPI: the Messages.LookUp method now returns also localized messages of user interface localization (when the option is active) of file DBWUI.msg
- 20200909 - BOM inside the drawing: in Inventor the BOM inside the drawing would be empty
- 20200902 - PDM core: when parameter SKIP_CREATION_BRIEFCASE_DSN was specified on file DBWCONN.PAR, a message was written in the Console, regardless of user type or context. Now it is printed only when remote access is enabled and only for administrator users

Service Pack: 2.16 Build: 20200819

Enhancements

- 20200819 - New DBWCONN.PAR entry:
SKIP_CREATION_BRIEFCASE_DSN
Allowed values are 0 or 1.
When assigned to 1, it causes the skip of the creation of ODBC DSN for the Briefcase functionality, during the startup of the PDM. This can be used to avoid uncontrolled behavior (cyclic errors or crashes) happening when the ODBC drivers for Access .mdb files are corrupted (i.e. with some specific Office 365 updates). A FAQ page has been also added on our site to explain how to manage such an occasional situation (<https://www.mechworks.com/faqs/o365/>).
Example:
SKIP_CREATION_BRIEFCASE_DSN 1
- 20200724 - Scripting: OnSearchBOMItem.lst added further types to the allowed extensions (doc, docx, xls, xlsx, pdf)

Behavior Changes

- 20201012 - DataEntr standard behavior: the counter passes from global to depending on the file type in a standard installation
- 20200806 - Master Drawing Mode: to allow the Master Drawing file management also for FROZEN documents in preview/open commands, the existing "*Options->Environment->Master Drawing Mode->[X] Always Preview/Open Released Master Drawing if it exists*" applies now to documents in RELEASED/FROZEN state

Bugs fixing

- 20200812 - DBSolidEdge: previous fix: "20200213 - DBSolidEdge: under certain conditions, checkin of part/assembly having linked drawings caused a wrong message ("The file cannot be saved. You may not have write access to the file or directory") to be displayed before completing the operation" was not completed because the SE message was still displayed during recursive checkin operation
- 20200810 - Advanced Filter: when tens of thousands of files contained more than one dot '.' in the name, the start would be very slow
- 20200806 - Assembly Duplication Wizard: under some circumstances, the references of derived Parts were not updated correctly
- 20200804 - Plot Dialog: slightly enlarged buttons UP and DOWN to match the German labels (Aufwärts and Abwärts)

- 20200804 - Local Checkout mode: working with the Enable Read-Only Local Copies option and Generic Documents, it is fixed a problem of documents not opened from the local copies folder
- 20200804 - DBSolidEdge/DBInventor Scripting: it is fixed a crash problem happening when executing the AutoExec.vbs with the 'ASYNCH and 'x64 specification in script header
- 20200730 - Local checkout mode: in some circumstances, during approval, the drawing documents in the local Checkin folder were not deleted with the consequent display of error messages that ask the user to delete it manually
- 20200715 - Setup: launching the setup in silent mode caused a wrong Global Parameter Path registry key set for DBInventor and DBSolidEdge
- 20200713 - Setup: launching twice the setup in silent mode caused the StandAlone 32-bit changed its localization to Spanish
- 20200707 - Excel BOM: the hidden components are now managed at record level, so it is possible to hide only some of the instances for a given child
- 20200702 - DBAutoCAD: Added messages involving the Save process for a more verbose log file
- 20200630 - Revision Approval: some messages were not localized
- 20200629 - Visual Cues: it is now possible to enable/disable Visual Cues in the Grids with the option "Visual Cues TreeColumn shown in Grid"
- 20200629 - Configurations: using DBWARM with the denied right "Modification->[X] Delete managed configurations", it was possible to delete managed configuration records from the database under some circumstances
- 20200625 - Assembly Duplication Wizard: double clicking on button "Duplicate" raised a .NET exception

Service Pack: 2.15 Build: 20200619

Bugs fixing

- 20200619 - Advanced Filter was not compatible with the encrypted dbwconn###.par file that contains the connection parameters
- 20200618 - Assembly Duplication Wizard: double clicking on button "Simulate" raised a .NET exception
- 20200611 - Local Checkout Mode: under some circumstances, the Revision output files were not overwritten during approve
- 20200609 - Delete documents: the hidden preview (PDF) of an Office File (ex. DOC Files) was not deleted working with Local Checkout Mode
- 20200527 - DBAalone: during the Check-in of assembly documents, with the *Options->Revisions->[X] Always update database structure when doing a check-in* and *Options->Projects->[] Avoid automatic parent document project*, it is fixed an issue causing wrong project registration of assembly components
- 20200522 - Edit BOM: the drag-and-drop of row items is allowed only in case of no items with an already assigned bom position
- 20200522 - DataEntr Scripting library: the case of classification of drawings may raise an exception if the levels in the system of categories was uneven
- 20200520 - Revision Outputs: Approve on a previous revision: in Released Database Mode, with the option "[X] Copy released files to Secured Storage Area", the update of generated output files was missed under some circumstances
- 20200519 - DWG=>PDF conversions (MDConvert command): better handling of error messages in batch operation
- 20200515 - DBAutoCAD: fixed many issues in case of encrypted parameter files usage
- 20200514 - ConversionWizard: it is fixed an issue causing redundant records on options management to be inserted in the event log table
- 20200513 - DBAutoCAD: it is now handled the revisions option "Reverse order"
- 20200513 - DBAutoCAD: solved the problem that writes one more custom revision property "DBW_REV" than what is defined in the revisions options
- 20200513 - DBSolidEdge: it is fixed an error happening when using the "Replace part with copy" command in SolidEdge, selecting a part belonging to a subassembly.
- 20200507 - Delete documents: the hidden preview (PDF) of an Office File (ex. DOC Files) was not deleted when deleting the main file
- 20200423 - Scripting: the LIST_ONLY_CURRENT_PROJECT_IN_SAVE option was not accessible using DBWGetOption/DBWSetOption
- 20200422 - Admin Tools: the script that detects recursions in assemblies and projects would crash for large databases. It now runs much faster
- 20200421 - Admin Tools: the Project DocumentAssignment tool, designed to move large quantities of documents from a project to another manages moving the documents so that the values stored in the PARENT_CHILD table are preserved

- 20200417 - Put into Briefcase: when starting from a drawing document, it was missed the automatic switch on the 1st level child document (already implemented for similar situation) in document management causing a wrong transfer of drawing ownership
- 20200416 - Cut list: *option->Environment->Cut List->[x] Never create child records for cut list items marked as 'NO_BOM'* has been renamed in *[x] Never create child records for cut list items marked in the CAD as to be excluded* since the previous label was misleading.

Service Pack: 2.14 Build: 20200410

Enhancements

- 20200401 - Web Client: show description in the tree items as in DBWorks
- 20200306 - AdminTools: updated the Databases Analysis Utility (see specific relnotes for details)

Bugs fixing

- 20200407 - Remote Access: Download: in some circumstances, working with the option for downloading all revisions output files, it is fixed an issues causing unnecessary extra copy of documents and now, to prevent such situation, a new warning message is shown in the ActivityConsole about involved documents
- 20200331 - Visual Cues: the key @NO_AUTOMATIC_VISUAL_CUES to disable only default visual cues was also disabling the custom SQL visual cues
- 20200326 - DBSolidEdge: it is fixed a crash happening when pressing characters in the ActivityConsole under some circumstances
- 20200326 - Scripting: OnNewPrj.lst raised an error if the DBWCUST specific DSN was missing
- 20200325 - Admin Tools: the Visual Cues Manager was not managing the ability to hide the cues for the attached documents
- 20200320 - Web Client: the client would fail to run queries after the second login in an environment with aggressive caching
- 20200320 - DBWAclServer: in servers where the shared folder is a whole local drive instead of just a folder, the kill lock functionality was not working correctly and therefore the lock was not broken
- 20200320 - Scripting: fixed a problem with the Activate_Debug_Logging.vbs script used to enable/disable logging
- 20200319 - Admin Tools: The Project User assignment tool would not start on a file DSN connection
- 20200319 - DBSolidEdge: Variant Notes. With previous fix: *"20181120 - DBSolidEdge: Variant Notes: the notes were refreshed also in the Background Sheets"* it might happen that some variant notes were not correctly updated
- 20200317 - Query Page: a new alert message is shown when the statement contains potentially dangerous operations
- 20200316 - Workflow Designer: the designer would throw an exception and not save the assignment settings for any specific user
- 20200316 - Scripting: Reset_to_new_state_a_Selection.vbs did not reset the DIRTY_REVISION_FLAG field
- 20200312 - Excel BOM: in countries where the comma is used to separate the decimals Excel BOM would replace the character also in strings (so not in numeric values)
- 20200305 - Task Manager: working with the option: *Options->Environment->Task Manager-> [X] Check for missing references before queuing task*, an application hang was happening when sending files to the Task Manager under certain conditions
- 20200304 - Scripting: TraverseProjects_and_Assemblies.vbs raised an overflow error when detecting a large set of components

Service Pack: 2.13 Build: 20200228

Enhancements

- 20200227 – Office integrations: Added compatibility with Office365 (Word, Excel, Outlook)
- 20200220 – Recursive Approve: Added a warning at the beginning of the process checking if all the selected assemblies are eligible to be approved. If not, the recursive approve will be immediately denied and an explicative warning will be shown.
- 20200218 – Assembly Duplication Wizard: when using a custom script to calculate the new document names, it is now written on file dbwscript.in the Unique Id of the parent assembly with variable @TOP_ASM_DOCUMENT_UNIQUE_ID

Behavior Changes

- 20200227 - Admin Tools: in the login the option to encrypt the password is taken into account only if it is clearly visible in the DBWorks options (and not greyed out)
- 20200130 - Excel BOM: the column containing a preview image is not resized automatically to allow adding preview images in the header without affecting the content below
- 20191217 - Advanced Filter: the csv output is now encoded using the standard Windows encoding 'Windows 1252' instead of the previous ASCII encoding as it displays correctly the Umlaut characters both in Notepad and Excel, unlike the previous encoding in use

Bugs fixing

- 20200226 - Show Parent/Child Tree in External Window: documents within the search results were not opened with a double click
- 20200225 - DBAlone: starting in automation/embedded mode and becoming visible/interactive, it is fixed a crash trying to use the OpenForBrowsing/OpenForUpdating commands
- 20200220 - Registration Wizard: under certain conditions, the registration of SolidEdge files by the tool launched from StandAlone produced multiple records
- 20200218 - DBInventor: it is fixed a crash in document management happening when re-opening documents under certain conditions
- 20200213 - DBSolidEdge: under certain conditions, checkin of part/assembly having linked drawings caused a wrong message ("The file cannot be saved. You may not have write access to the file or directory") to be displayed before completing the operation
- 20200212 - Admin Tools: the tool could crash after an update on Windows 10
- 20200205 - DBSE Conversion Wizard: an instability due to out of process synchronization, happening under some circumstances, has been fixed
- 20200127 - SolidWorks Integration: working with Cutlist, it is fixed a problem causing an internal error when processing features with long names
- 20200123 - The Admin Tool that manages the localization would add multiple entries for revision fields causing the localization to be ineffective
- 20200115 - SolidWorks Integration: working with configurations, it is fixed a problem causing an error in DataEntr execution to generate a new filename in case of multiline text configuration's property
- 20200113 - DBSolidEdge: previous fix "20180307 - DBSolidEdge: using SE ST9mp13/ST10mp4 or later, it is fixed a problem of SE message fired when updating custom properties under certain conditions" was not completed because the SE message was still displayed when managing CAD specific properties
- 20200109 - BOM of configurations inside the drawing: the BOM could freeze for some assembly structures
- 20200107 - Full Preview page: at startup of the PDM, selecting a SolidEdge file and then showing it on the full preview page caused a crash of the application
- 20191220 - Category Maker would raise an exception if you right clicked the list of codes on the right in the gray area
- 20191219 - Web Client: the list of local files in the cleanup dialog could display the same file twice, once as deleted and once as synched but with 0 bytes
- 20191218 - MultiConfigurations BOM in drawings: some hierarchical structures would loop the engine and freeze the system
- 20191217 - DBSolidEdge: working with FOA models and related drawings, the 'Save As' was not able to handle the replacement of all references
- 20191216 - Admin Tools: the tool that manages custom interface labels would fail to save the parameter file correctly for some of the REVISIONS fields

Service Pack: 2.12 Build: 20191213

Behavior Changes

- 20191112 - DBAutoCAD: launching the StandAlone Browser will now call the 64-bit executable by default

Bugs fixing

- 20191213 - DBAutoCAD: under certain conditions, the option APPLY_AUTOCHECKIN_AUTOCHECKOUT_TO_GENERIC_DOCUMENTS wasn't correctly updated

- 20191213 – FullPreview: since R17sp2.11 it was not working anymore on Solidworks2019 and Solidworks2020; an error message about loading mwEModelView2019x64 was shown.
- 20191212 - Shell API EnableRepaint: The Browser repaint was not automatically re-enabled at the end of the script execution when the shell EnableRepaint was called with value 0.
- 20191212 - DBInventor: a performance issue has been fixed when starting to edit a frame component
- 20191212 - DBWorks API to set Custom properties of SolidWorks files using the object DBWJComp.CodeObject: the properties failed to be set
- 20191205 - PDM Core: long messages displayed for particular functionalities (like prompting for changing the ownership of a large set of documents) were causing a crash of the application
- 20191129 - DBSolidEdge: under some conditions, a hang was experienced when opening assembly documents and trying to display the DBSE ReadOnlyComponent dialog
- 20191127 - Recursive Checkout/Checkin/Approve dialog: double-clicking on a column header for sorting data was causing wrong results if the grid had hidden rows for not managed documents (DBW_NO_LIFE_CYCLE = 1) - **Notes: due to a limitation, any hidden row will become visible after having applied the new sort order**
- 20191126 - TaskManager: working with API, if the option:
Options->Environment->Task Manager-> [X] Force usage of integrated CAD for execution of tasks involving homogeneous documents, queued from standalone application
 was enabled, the task was not executed by the dedicated CAD when the document set was homogeneous and queued by Standalone.
- 20191120 - DBSolidEdge: Mini Browsers (Tree in an External Window): it was missing the checkout/checkin sub-menu
- 20191112 - Browser Icon: with the Browser opened in a monitor different from the monitor where the CAD is opened, the iconization of the Browser was putting the iconized window in locations not coherent with the default icon location, that is normally on the top-right side of the monitor - *Notes:* when moving the iconized window in a different position, such position will be remembered for the current session only
- 20191112 - *Options->General->[X] No Standard Parts in Working Set:* operations like an *Open* or an *Increment Revision State*, executed on an explicitly selected set of Standard Parts documents, were not working because the temporary working set, being created as a result of the multi-selection, was empty
- 20191111 - Save-as of a document: it was possible to overwrite the record of an already existing and released/obsolete "bom item/fake" document; a warning message is now displayed in such case and the input form is displayed in view mode (white background color)
- 20191105 - SolidWorks Integration: Read-Only document notification dialog: the dialog that appears when attempting to modify a document in a read-only status (like CHECKED IN or RELEASED) was displayed and quickly came behind the last opened document window if the opening of the last document, for geometric/rebuild reasons, was modifying a document already opened and whose window was in the background - the fix implies that the modified document (in this case the underlying opened document) is put in front so that the Read-Only notification dialog will show the same document displayed as front window by SolidWorks
- 20191030 - SolidWorks Integration: SolidWorks->File->Save-as of a Drawing: the PDM-driven save-as of a Drawing, when started from SolidWorks itself, was hanging the SolidWorks application - the fix delays the save-as execution and displays a progress bar during such activity - no changes have been applied to the save-as of Parts and Assemblies
- 20191028 - Approve of a Drawing: if the Drawing had no child Part/Assembly but only Generic Documents as children, a message box was stopping the approve process

Service Pack: 2.11 Build: 20191025

Enhancements

- 20191025 - Drawing_template.SPT: added compatibility with Solid Edge formats
- 20191024 - EDrawings and full preview: added compatibility for version 2020
- 20190920 - Full Preview: added compatibility with SolidEdge 2020. The new control in use is lighter and faster to load and the interface is cleaner
- 20190903 - AutoCAD integration: added compatibility for AutoCAD 2020 (included Mechanical and Electrical) and removed compatibility for AutoCAD 2016 (included Mechanical and Electrical)

Bugs fixing

- 20191025 - ExcelBOM: previews inside the BOM were not displayed
- 20191025 - Scripting: Activate_Debug_Logging.vbs raised a 'path not found' in specific scenarios with DBWARM enabled
- 20191015 - Revision Outputs: output files created from Models (like STEP files): CONFIGURATION field values with special characters inside (like < or >) were causing errors in the output file creation

- 20191007 - Null fields conditions: null fields conditions assigned as */"<condition>"* in each line of the assignment table (*Options->Data Input->Not null fields*) were not correctly managed for linked drawings in an approval process
- 20191002 - ProjectUser Admin tool: the projects tree would not display the projects description where applicable
- 20190930 - Visual Cues: visual cues definitions with an assigned Tree column name were not working in the database grids
- 20190924 - DBInventor: with the *Options->General->Assemblies->[X] Force Parent-Child Make/Buy attribute from Inventor 'BOM Structure' attributes* being checked, the *RMB->BOM->Change quantity ...* functionality was creating double entries in the Tree, one for the 'fake' components, the other for the 'real' components
- 20190923 - Excel BOM Designer: the option 'only buy items' would not be set by the editor
- 20190923 - Workflow: the *RMB->Approve* functionality was available for documents being checked-out
- 20190920 - Excel BOM: the Carriage Return separator for lists of projects or drawings in cells would not be effective
- 20190919 - BomTitle.txt: CAD Specific Properties: when working with mixed CAD environments and using a SolidWorks specific property (with the prefix "SolidWorks@") in the BomTitle.txt, CAD system different from SolidWorks would crash
- 20190913 - TaskManager: working with API, it is fixed a regression introduced with previous fix "20190606 - Task Manager: Shell API TaskSubmit: added a check to prevent appending tasks with wrong working server"
- 20190913 - TreePage: pressing 'Filter the records of the list with a mask' the buttons 'Filter all tables' and 'Filter all database' were wrongly enabled
- 20190911 - Workflow: the DBW_WORKFLOW_EVENT_LOG was periodically cleaned in the same way of the master EVENT_LOG table, following the options in the General->Event Log panel; the clean up of the DBW_WORKFLOW_EVENT_LOG is no longer made for not breaking any compatibility with the ISO, FDA and/or FAA certification, as these certifications require to always keep track of their workflow history
- 20190905 - Remote Access Local Mode: with the "[X] Work locally" already activated, when checking-out/unchecking-out/checking-in directly a document, its linked documents (for example brother configurations) were not properly managed in their COMPANY_ID/OWNER_COMPANY_ID fields
- 20190904 - *Options->User Interface->Tree->Avoid Child Tree for Documents with File Names like...* : the option was applied by mistake also when creating Working Sets of the node and all its child components
- 20190830 - Assembly Duplication Wizard: under certain conditions, the Documents state was not always correctly updated
- 20190821 - DBWorks: with DBWArm enabled, under some circumstances, the "Utility" command button in the Command Bar was not able to show the list of available scripts
- 20190821 -Task Manager: Fixed an issue that caused the TaskExecutor not to restart automatically after CAD closing due to maximum number of consecutive tasks reached.
- 20190807 - Tree Page: Search Grid: the current grid columns layout was not preserved when toggling between tabs on the Grid
- 20190807 - Revision output: the writing of _COPYDUETOLOCK_ output file (generated when the original one is found locked exclusively) was stopped by a modal alerting message box. It's going to be replaced by a message in the console
- 20190807 - DBInventor: Approval on Previous Revision: with the *Options->Revisions->Approval->[] Update drawings on revision approval* unchecked and with at least one Inventor@... mapping in the BomTitle.txt, Drawings had their Inventor@... properties not updated, causing inconsistencies in the property values being displayed
- 20190807 - *Options->Environment->Link Mode*: missing fields in the alignment lists were reported even if the related options were disabled
- 20190805 - *Revisions->Approval->[X] Undo the checkout when no changes in the document on a recursive approve*: for documents with no changes (with the revision number displayed in green color), either the OnUncheckout.LST and the OnUncheckin.LST scripts were not invoked (if enabled)

Service Pack: 2.10 Build: 20190802

Bugs fixing

- 20190801 - Revisions Outputs: DBWAclServer: when approving on a previous revision, with the output files not registered in the database (as generic documents), under some circumstances the acl permissions were set anyway, blocking the user access
- Documents and in Link Mode with the main documents, the GZ files of the output files were not updated
- 20190801 - DBWShell("WaitDialog..."): with a Wait Dialog opened from script, messages from the Revision Manager were sent to the opened Wait Dialog, overwriting the programmed texts being displayed
- 20190801 - DBWFilterSelect: compatibility with ODBC Driver 17 + windows authentication
- 20190801 - Web Client: with Remote Access Mode active the 3rd query in a row + general test search condition may fail
- 20190731 - Tree: RMB->Approve: when starting from a checked-out state, some instabilities on particular systems were causing a crash or an unresponsive UI status

- 20190730 - Remote Access: Full Replication: working as a DBWArm Administrator, so having full permissions for deleting foreign records, when deleting a foreign record, only the file was destroyed in every replication site, but the database record was not deleted
- 20190730 - Options->Revisions->Checkin->[X] Send notification to all users on check-in: a non necessary reload message was sent even when changing the document STATE from a NEW/RELEASED state to a CHECKED_IN state
- 20190730 - Assembly Duplication Wizard: the duplication of SolidWorks assembly wasn't able to manage broken references
- 20190729 - DBWorks and Standalone Client: The MechWorks PDM registration was failing if the SolidWorks license registration was made through the web.
- 20190729 - Options->Browser Behavior->Extend Search on REVISIONS Table/Extend Search on the DBW_ATTACHMENTS Table: if the assignment of the field names was executed before checking the noted options, an empty result set was returned by the Search functionality
- 20190726 - Shell API GetDocumentExternalReferences: added optional boolean parameter *includeBrokenReferences*. If the parameter is set to 1 also the broken references are returned.
This parameter is considered only in the SolidWorks Integration.
The new signature is:
DBWShell("GetDocumentExternalReferences *documentFileName* [*includeBrokenReferences*]")
- 20190724 - Task Manager: working with derived parts, it is fixed a problem causing derived parts not approved and blocked at database level when the task manager is used to approve the base part
- 20190723 - Search: too complex queries (with a query size longer than 8192 characters) were not properly intercepted, causing further issues like crashing of the Sort capability
- 20190722 - DBSolidEdge: Shift-Save-As option: when executing the Shift-Save-As from the CAD, it was always proposed to create a new database record
- 20190718 - Workflow Designer: all the processes were labeled as ECO
- 20190717 - SolidWorks Integration: Derived Parts: with some particularly long base part file names, a crash was happening when saving the derived part
- 20190717 - SolidWorks Integration: Local Checkout Mode: Routing: with the autocheckin/checkout on save-as activated, a crash was happening in SolidWorks after the Save Wizard was invoked for the new piping components - **Notes:** due to internal architectural limitations: a) it is NOT possible to autocheckin/checkout components created by the routing module when running in Local Checkout Mode b) it is NOT possible to insert routing components into an assembly still not saved
- 20190715 - Derived Parts: a new revision of the Base Part was causing the same revision to be applied to all the Derived Parts, overwriting any existing revision value - the logic implemented is now that the Derived Parts are linked only if their Revision Value is the same of the Base Part - in case they are different, no alignment is executed
- 20190711 - DBSolidEdge: with the option for always saving using DBSE and without any Dataentr.lst script, when closing a new modified document and answering YES to the question for saving the new modified document, the file save dialog was proposing an empty file/extension as default, so potentially creating database entries of type G with files without any extension
- 20190709 - Admin Tools: the application after a Windows update would fail to start reporting a low level ADO error
- 20190704 - DBSolidEdge: with the option for getting the SolidEdge material automatically, in particular imported parts a crash was happening while saving
- 20190703 - DBInventor: Options->Data Input->[X] Use OnOk.LST script when pressing OK ->[X] Execute for every changed child component: it was not working if the top-assembly 'save all components' dialog was executed assigning all 'yes' to each component
- 20190703 - Options->General->Enable Unicode Secondary Language: when processing the UNICODE assigned dictionary for building the mapped strings for the Browser lower toolbars, the strings to be mapped were not correct, so never matching the contents found in the dictionary - this was resulting in a N.A. string being returned when no MechWorks PDM log was activated, and in "string not found" message boxes being displayed when the MechWorks PDM log was activated
- 20190701 - SolidEdge integration: When saving a drawing with an associated part, the *_RXX_* custom properties of the part were deleted.

Service Pack: 2.9 Build: 20190628

Enhancements

- 20190626 - DBWAclServer: the synchronization phase, made at client side of modifications made from the Service at server side, has been improved with the possibility to customize its behavior using two new parameters of the DBWCONN.par file:
SYNCHRONIZATION_CYCLES_TO_CONSIDER_SLOW -> represents the minimum number of wait cycles that are needed to consider this as an episode of network latency issue

SYNCHRONIZATION_TIMES_LIMIT -> represents the number of episodes of network latency issues that are needed before alerting the user

Their default values are:

SYNCHRONIZATION_CYCLES_TO_CONSIDER_SLOW 10

SYNCHRONIZATION_TIMES_LIMIT 10

- 20190612 - Assembly Duplication Wizard: added a checkbox in the *Options* tab for selecting the current project *Use current project*

- 20190530 - A new sub-option has been added on the Project page, checkable if father option is NOT checked:

Options->Project -> [] Avoid Documents without Projects

Options->Project-> [X] Always allow Documents without Projects

This option allows the user to leave a document without a project assigned even when a Save action is performed on the document.

- 20190530 – SolidEdge and Inventor integration, implemented sub-option:

Options->Environment->[X] Always use DBWorks 'Save' and 'Save As'

Options->Environment->[X] Enable CTRL key for executing native CAD 'Save'

Already present in SolidWorks integration.

When this sub-option is checked, when pressing the CTRL key, no actions will be executed by the PDM when Saving a Document using the CAD 'Save' functionality; the purpose is to allow a very quick save of the current model without any action from the PDM side.

Bugs fixing

- 20190627 - Save Wizard in Inventor: a crash dialog may appear while saving
- 20190627 - Excel BOM: the leading zeros in BOM positions had been removed as they had become unnecessary for sorting purposes, and now they have been reintroduced
- 20190627 - DBInventor: it is fixed a problem related to serial number generation
- 20190626 - OnSubmitToWorkflow.lst: fixed a problem in dbwscript.out generation when working with OnSaveAs.lst activated and invoked by DBWCreateEDrawingAs
- 20190625 - DBInventor: the DBInventor Browser Pane was not displaying the tree when placed on a desktop position different from the left-side standard (actually it was possible to display it by resizing the DBInventor Browser Pane window)
- 20190625 - DBInventor: the DBInventor Browser Pane was not displaying the tree for a document saved for the first time
- 20190625 - DBInventor: under some conditions (Windows 10, graphic card behavior, etc.) some hangs were experienced when opening components from the DBInventor file browser of an already opened assembly
- 20190620 - DBSolidEdge: the "CheckOut" and "UndoCheckIn" Command Bar Buttons were wrongly enabled in case of Documents submitted to Workflow, even if not doing any action
- 20190619 - DBSolidEdge: Cut-lists: in particular cases, exceptions were fired by SolidEdge when requesting the length of the frame components, causing the PDM to become totally unresponsive (a restart of the CAD was required)
- 20190618 - Excel BOM: the BOM would not include the previews for Inventor files
- 20190613 - DBSolidEdge: the bug fix “20190228 - DBSE: it was possible to start a Workflow with an RMB click in the Edge Bar DBSE Tree - Notes: due to a limitation, it is not possible to start life-cycle actions directly from the RMB->Checkout/Checkin menu in the Edge Bar DBSE Tree - since of this, also Workflow actions can't be started from that UI” was too restricting: it is now possible to start a Workflow with an RMB click in the Edge Bar DBSE Tree in case of CHECKED_IN components
- 20190613 - Project User Admin Tool: The procedure that would remove project links when a project belonged to 2 father would not work in German
- 20190606 - Task Manager: Shell API *TaskSubmit*: added a check to prevent appending tasks with wrong working server name
- 20190606 - Visual Cues: DBWShell("ExecSQL"): the execution of this shell command was not clearing the internal database cache, so resulting in visual cues attached to database fields to not be correctly updated

Notes:

1 - in order to grant that a visual cues always fetches the data directly from the database and not from any grid/tree/database cache, it must be defined as @SQLxx

2 - any direct update of the database made with ADO commands will not reset the internal database cache

- 20190531 - SolidWorks Integration: Browser opened as a CAD child window: after closing a document, it is fixed a problem of splitters position
- 20190528 - Excel BOM: the condition 'LEVEL=1' without spaces would not stop the top-down visiting of the assembly items. The result would be correct but the performance would be sloppy
- 20190528 - ManageMechWorksDSN: when *Trusted Connection* checkbox is enabled, the *Username* and *Password* fields were not greyed

- 20190528 - DBWShell("TaskSubmit"): with the *Options->Not Null Fields -> Not null fields on revision approval* option set, it is fixed a problem causing an application hang when submitting documents with records having null fields
- 20190528 - Derived Parts: Revisions: Recursive operators: due to a regression introduced with the fix "20181210 - Derived Parts: when approving any Derived Part using the recursive functionality, the Derived Parts were not correctly updating their _RXX_ custom properties", the recursive revision operators (checkout/checkin/approve), applied on the BASE part of a group of DERIVED parts, were not keeping synchronized the STATE of the derived parts
- 20190527 - Component Selector Dialog: Child/Parent Tree: with the Browser opened and with the option for displaying child/parent trees in the sub-tree, from the Component Selector dialog (displayed when inserting a new component in an assembly) they were not working either the child and the parent trees
- 20190531 – SolidEdge integration: Even if the option *Environment->Configurations->[X] Save all configurations automatically* was checked, only the current configuration was registered if the assembly was present in the filesystem but not registered in PDM.

Service Pack: 2.8 Build: 20190524

Behavior Changes

- 20190516 - SolidWorks Integration: the option *Revisions->[X] Never open documents on recursive checkin/approve operations->[X] Except dirty documents* is now considering also documents opened in memory and in a dirty status (* character in the window title)
- 20190515 - Project User Admin Tool and DBWorks Admin Tools: the tool to assign the projects to the users has a separate login and does not invoke the Stand Alone to verify the identity of the user

Enhancements

- 20190430 - Compare BOMs: A new message box is now displayed, with the "[X] Do not show this message again" checkbox, to allow the comparison of first hierarchical level only
- 20190429 - Comparison between tree structures of distinct revisions of an assembly: it is now possible to request a comparison at first level only
- 20190417 - Scripting: new DBWShell command GetRevisionOutputFiles
The command retrieves the list of output files generated for the last revision cycle.

Parameters:

uid – unique id of the document

Results:

@REVISION_OUTPUT_FILE_PATH_NAME =<revision output file #1 path name>

@REVISION_OUTPUT_FILE_PATH_NAME =<revision output file #2 path name>

...

@REVISION_OUTPUT_FILE_PATH_NAME =<revision output file #N path name>

Example

'...

call DBWShell("CurrentDocument")

docUid = DBWResult("@DOCUMENT_UNIQUE_ID")

call DBWShell("GetRevisionOutputFiles " & docUid)

Set fs = CreateObject("Scripting.FileSystemObject")

Set tfolder = fs.GetSpecialFolder(TemporaryFolder)

Set a = fs.OpenTextFile(tfolder & "\" & "dbwreslt.in" , ForReading, True)

Do While a.AtEndOfStream <> True

line = a.ReadLine

tokens = Split(line, "=", 2, 1)

DBWMsgBox tokens(1)

Loop

a.Close

'...

Bugs fixing

- 20190522 - DBSolidEdge cut-list: under certain conditions, there was an unmanaged exception causing a freeze of the application when saving cut-list items
- 20190521 - Tree Page: Plot the node and all its children: same drawings appearing as child multiple times were creating blank rows in the plotting dialog

- 20190516 - Revisions Rollback: it is fixed a problem regarding generic documents and configurations
- 20190516 - Advanced Filter was not compatible with driver Microsoft ODBC SQL 17
- 20190516 - DBWorks: DBWAclServer: in some circumstances recursive approval of open document caused a crash of SolidWorks because of missing write permissions
- 20190509 - Remote Access: Transfer Ownership: in some circumstances the download function, when needed, was considered as failed even if the file was correctly downloaded, causing the whole command to fail.
- 20190509 - Remote Access: erroneous values for new revisions were applied when incrementing the revision on a document shared with other companies with different time zones
- 20190508 - Tree: if the options *User Interface->Tree->Show description in the Trees->Show ONLY description* and *User Interface->Tree->Show description in the Trees->Highlight 'fake' components and quantities in the Tree* were both checked, all the quantities were displayed as fake quantities (in pink color)
- 20190507 - Project User Assignment tool: in case of projects with duplicate IDs the tool now detects them on start and allows to rename them automatically with one click applying a simple ‘_1’, ‘_2’, ... pattern
- 20190507 - Excel BOM would not handle BOM_GROUP sum of quantities on Windows 10 with Update 1809. Items at a lower level would be brought up one level but not joined to the same items in the upper level
- 20190507 - RMB Popup Menus on the Tree Controls: on W10, if the ID field had a small width, so causing the Tooltip rectangle to be displayed for viewing the full ID text, when displaying a RMB Popup Menu, the menu items were not highlighted if the mouse was moved outside the menu area just before starting to select any menu item
- 20190503 - Tree page: it is fixed a problem of horizontal splitter position under certain conditions
- 20190503 - Admin Tools: in the data form editor, double clicking on the decimals field then clicking somewhere else would cause a crash
- 20190502 - Local Checkout Mode: after the approval, the preview was missing for MS Office files (.DOCX, .XLSX)
- 20190502 - Excel BOM, Open Wizard: the SolidWorks file selected would remain in use and therefore not writable
- 20190502 - Browser: under some circumstances, it is fixed an instability happening in grid/tree population
- 20190502 - DBWPopupHiddenCmds.txt: the APPROVE_NO_INPUT entry was not managed
- 20190502 - Excel BOM: the sorting could fail in case of duplicate positions
- 20190430 - Browser: Plot button's Grid Enhanced Tooltip: using custom fields, the enhanced tooltips were not shown
- 20190424 - Option *Revision->[X] Never open documents on recursive check-in/approval operations->[X] Except modified checked-out documents*: it was not considering the direct Checked-Out to Approved case
- 20190423 - BOM inside a drawing: the BOM ‘parts only’ would fail to filter out assemblies
- 20190423 - Drawing Properties of type DOCUMENT.xxx: under some circumstances, the DOCUMENT.XXX properties were not correctly updated
- 20190423 - Project User Assignment tool: the main window would not appear and the tool failed to display
- 20190418 - DBWShell("LoadQuery"): if the provided query was longer than the maximum allowed for queries (8192 characters), it executed anyway returning unexpected results due to its truncation.
- 20190418 - SolidWorks Integration: Virtual Components: with both the options *Environment->[X] Always use DBWorks 'Save' and 'Save As' and Save->[X] Always do a Save As if the document does not exist in the database* being checked, the actions of creating a new Virtual Component in its own window and switching back to the Assembly Window, then saving the Assembly, they were causing the loss of any Virtual Component created geometry
- 20190417 - Project User Assignment tool: the tool would raise an exception on start on SQL Server 2012 databases
- 20190417 - Options->User Interface->Tree->[X] Expand the current project in the Project Tree and collapse all the others: due to a regression introduced with the bug fix "20171211 - Tree: with the option "User Interface->Tree->[X] Expand the current project in the Project Tree and collapse all the others", when changing the Current Project, the just assigned Current Project was rebuilt two times", the current project were no longer expanded when changed

Obsolete options/functionality

- 20190426: removed the shortcutbar-> Tool Setup->Visual Cues Selector; the choice the visual cues set to be shown is still available from the User Options->Current Visual Cues dropdown list

Service Pack: 2.7 Build: 20190412

Behavior Changes

- 20190327 - DBWorks: as an improvement of relnote “20170913 - DBWorks: the enabled SolidWorks option *Performance->No Preview during open (faster)* is not compatible if any of the PDM options *Revision->Outputs->File or Environment->Master Drawing Mode->Enable the Master Drawing Mode* are set. An alert is shown to the user saying that the SolidWorks option *Performance->No Preview during open (faster)* is not available from SolidWorks 2019, this option has been managed only with compatible versions and more precisely when strictly needed

- 20190314 - Rename: a failure in replacing a reference in a child component no longer stops the whole Rename process - errors are now displayed in the Activity Console

Enhancements

- 20190404 - New DBWCONN.PAR entry: *DBWORKS_TIME_INTERVAL_FLOATING_LICENSE_RECONNECT*
When assigned to a specific value, it determines the time in seconds the plugin waits before each attempt to reconnect after a disconnection due to an idle state of the machine. If not present, the default value is 60
Example:
DBWORKS_TIME_INTERVAL_FLOATING_LICENSE_RECONNECT 30
- 20190403 - DBWorksLogAnalyzer: the replacement of the grid component adds text filtering to more datasets inside the tabs and simplifies the grouping by fields. In order to group the information hierarchically by a given field it is now sufficient to drag the column header up into the grouping pane
- 20190403 - Check for USERS\<user id> directory: improved reliability in some specific customer environments
- 20190403 - Parent Tree: handled some crashes happening in specific customer environments
- 20190401 - Fake Components: the real quantity is now not displayed if equal to zero (0) - the real assembly quantity is now displayed without round brackets for shortening the displayed string
- 20190328 - The Admin Tool to manage Project Assignment to Users has undergone an engine rewrite for performance. It loads 4 times as fast and has a reduced use of memory to handle installations with hundreds of users and tens of thousands of projects. If a project is found in distinct branches of the projects tree, it forces to pick the correct location and removes the project from the other branches
- 20190325 - New DBWCONN.PAR entry: *DBWORKS_MAX_FEATURE_MANAGER_SYNCH_NESTING*
(applies only to DBSolidEdge and DBInventor)
When working with the *Options->DB Feature Manager->[X] Keep DBWorks Feature Manager synchronized with selections*, it defines the max hierarchy level to be processed for synchronizing the selections in the Browser with the currently opened Assembly components (default: 0 => no limit)
Example:
DBWORKS_MAX_FEATURE_MANAGER_SYNCH_NESTING 1
- 20190320 - DotNet Custom Control: the MwPDMDataInputControlCS project is now available in the LST_DIR\DotNETAPI\MwPDMDataInputControlCS folder as a C# example of the API.NET data input control system management
- 20190318 - SolidWorks Integration: Cut-list: ability to assign a numeric format to cut-list properties import
It is now possible to define a numeric format for the property->field mapping, by adding, after the field name, a | (vertical bar) character followed by a string formatted in the same way of the *Options->General->Units->Use internal CAD system units for calculation->Format* (see the Help file for more details)
Example:
Options->Environment->Cut List->Property->Field association list
TOTAL LENGTH->LENGTH|%.1f
With such definition, if the cut-list property TOTAL LENGTH will be evaluated as 5.31, the LENGTH field will be populated with the value 5.3
- 20190318 - RMB Popup Menus: on the latest updates of Windows 10, after editing a sketch of a part, the RMB Popup Menus were no longer reacting to the mouse-over events, only to the mouse clicks
The issue is known and can't be rapidly fixed, because it is inside a 3rd Party software library used by MechWorks PDM for the Popup Menus.
For such reason, waiting for a complete solution, a new option has been added to the User Interface page:
[X] Use Windows native RMB Popup Menus
that shows the RMB Popup Menus using the native Microsoft functionalities.
Such native menus:
 - don't have any image displayed
 - can't collapse automatically on the most recently used commands
 It is up to the customer to accept the above limitations or continue to work with the full MechWorks PDM popup menus, accepting the problems described above

Bugs fixing

- 20190411 - SolidWorks integration: Parent Tree: fixed a crash appearing randomly on specific W10 environment
- 20190410 - Inventor/SolidEdge integrations: the icons displayed in the Browser were not correct or updated in some cases
- 20190409 - Cutlist: with DBWAclServer enabled, when a state change was done on a part having cutlists, DBWAclServer generated errors on not existing .CUTLIST files. Besides some related records were inserted too in the event log table.
- 20190409 - DBInventor/DBSolidEdge: with the *Options->Revisions->Checkin->[X] Send notification to all users when doing a check-in/refresh* checked, it is fixed a problem of unnecessary reloading components causing performance issues

- 20190408 - Comparison of tree structure between two revisions: the tool would not handle correctly duplicate parent/children keys and could fail to display the comparison tree for large assemblies
- 20190408 - TreePage: working with multiple selections, the contextual menu is created according to the last selected item, and if a revision command is not allowed for all the items, a warning message is now displayed
- 20190404 - MwLicenseManager: under some circumstances, there was an error at server level causing client connection problem (a "Handler.POST Receive: 0" message was dumped in server log file). To solve this issue, it is now possible to set a new parameter (MWLICENSEMGR_RECEIVE_HELPER 1) in the MwLicenseManager.config file to improve reliability of client/server connection. Once the new parameter has been added, the running MwLicenseManager.exe server must be stopped, and, after the related module replacement, restarted
- 20190403 - Scripting: DBWGetOption("AVOID_SEARCH_ON_OBSOLETE_DOCUMENTS") was not working
- 20190403 - Local Checkout Mode: Concurrent Engineering: the approval of a document was causing missing references issues on the other workstations
- 20190403 - Scripting: using lst\system\Assign_file_to_empty_records.vbsscript, the window related to "Assign file to a record with non-existing file" now displays the native CAD components in DBSolidEdge; for DBStandAlone it displays all managed CAD extensions (SolidWorks, SolidEdge, Inventor)
- 20190402 - DBSolidEdge: with an open Assembly having an opened Part (with its related Drawing), the approve recursive command of the Part launched from the ribbon caused a crash while producing Revision Output files
- 20190401 - Excel BOM: the cells containing preview images were not fitting the image correctly
- 20190401 - Browser: there were still situations where the Browser was not refreshed correctly after a life-cycle state change
- 20190329 - Database Update tool: removed a false positive for the missing field REVISIONS.DBW_REVISIONS_UNIQUE_ID
- 20190328 - SolidWorks Integration: *Options->Open/Save->Open->[X] Show a warning if any no-database CAD document is opened*: broken references were not considered and always displayed as a warning when out of the allowed directories
- 20190325 - DBWFRM: Replication partners form was not displaying buttons anymore
- 20190325 - *Options->DB Feature Manager->[X] Keep DBWorks Feature Manager synchronized with selections*: it was not working if the currently selected grid in the Tree Page was different from the *Composed Of* and *Used By*
- 20190325 - *Options->Revision->[X] Avoid database record editing if released->[X] Avoid database record editing even if checked in*: the *Options->Revision->[X] Allow 'Add Document' if released* was not applied also to the CHECKED-IN case
- 20190325 - Scripting: the message which suggests the user to port the form from DBWFRM to .NET has been localized
- 20190320 - Local Checkout Mode: Approve: in SolidWorks, when running with DBWAcIserver, approving a part being used by another user in read mode (i.e. opening a containing assembly), caused an error message that was impossible to delete the file from the *Shared Checkin* folder, inviting the user to delete it manually. Now a clear message is written on the *Activity Console* indicating the user locking the file, an attempt to break the lock is done and, if successful, the file is deleted and the locking user is alerted with a reload message.
- 20190320 - Performance: Child Tree: a performance bottleneck has been fixed
- 20190320 - Browser: under some circumstances, the Tree page splitter position was wrong after some minimize/restore window operation
- 20190320 - Browser: *Options->Environment->CutList->[/]Save Cut List as Distinct Records* now disables also the buttons related to *Property->Field association list*
- 20190318 - Working Set Edit: for fields of type DATETIME it was not available the calendar control
- 20190318 - SolidWorks Integration: due to SolidWorks API limitation, saving a Drawing as DXF natively with the option "Scale Output 1:1" enabled, will affect the scale of the resulting DXF for Parts created on DBWorks Revision Output. With this fix, a new message is shown on the Activity Console to warn the user about the actions to reset the value
- 20190314 - Advanced Data Input: .DYNAMIC .SQL queries with \$() macros: a recursion issue has been fixed when the \$(<field name>) was the same field to be populated with a list box
- 20190314 - Tree in an External Window: the window title was not updated for new trees build within the external window
- 20190314 - SolidWorks Integration: Envelops management: *Options->Open/Save->Save->[X] Never create records for Solidworks Envelop Components*: with the *Options->General->Assemblies->[X] Force Parent-Child Make/Buy attribute for any SolidWorks Assembly Envelope* being activated, when mixed cases were detected, with the same component being placed, at the same time, as a normal component and an envelope component, no records were created for the envelope components - more, the PARENT_CHILD_RELATION_TYPE was not correct for the normal component case - **Notes:** due to internal architectural limitations, the value of the PARENT_CHILD_MAKE_BUY field (for example NO_BOM) is applied to ALL the instances of the component, no matter whether they are normal components or envelope components - so, in these particular cases, a post-elaboration of the PARENT_CHILD table is required for creating BOM with mixed normal/envelope components
- 20190314 - Admin Tools: the Shortcut Bar Manager in the Admin Tools is added support for *.vb files

- 20190313 - BOM->BOM: When working with *User Interface->Browser Behavior->[X] Hide Query Page SQL window* option, the command is not executed and a new message is shown warning the user to enable the Query Page SQL window (by default the Query Page SQL window is hidden)
- 20190313 - MwLicense Manager: under some circumstances, it is fixed a problem related to serial number evaluation
- 20190311 - Standalone: User Interface: the “Open for Browsing” command was wrongly available when the Browser was already opened in Browsing mode
- 20190311 - Standalone: User Interface: the “Open for Updating” command was wrongly available when the Browser was already opened in Updating mode
- 20190311 - Browser: clicking too fast in the Document Page grids was causing a SolidWorks crash

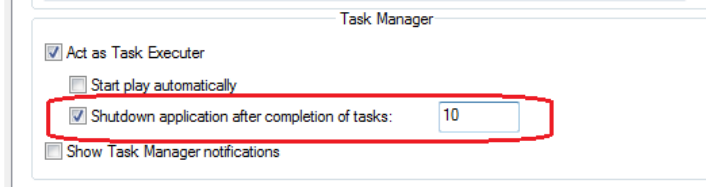
Service Pack: 2.6 Build: 20190308

Enhancements

- 20190308 - Task Manager: when the connection to the DB is down, all the execution nodes are stopped running tasks and, if the script LST\OnTaskManagerLoseDBConnection.LST is found, it is invoked to allow customized actions on the DB in case a task was interrupted during its execution.
- 20190308 - Task Manager: a new option has been added:
Options->User Options-> [X] Shutdown application after completion of tasks

As dependent from the option:

Options->User Options-> [X] Act as Task Executer



This option allows the user to shutdown the application in the execution node, hence reducing chances of hangs when long time requiring tasks are executed in large quantity. In order to make the application run again, in the execution node, a dedicated windows vbscript must be set-up and launched so it can check whether the process is running or not.

To alert about this application shutdown, an event will be created in the EventLog table and a fading popup will be shown.

- 20190227 - Current Project->[X] Do not show this message again
 The check-box is now different if the *Current Project* action is started with a mouse double-click or with the *RMB->Current Project* menu, so allowing to never assign current projects with a double-click and to continue to assign it only using the RMB action
- 20190225 - SCHEMA\DATAENTR2_@EDITWORKINGSET@.TXT
 This new special Dataentr2 form definition file, if existing, will be used when editing more than one DOCUMENT record. This new feature allows the differentiation between the form displayed for searching documents and the form displayed for editing multiple records (creating a Working Set)
- 20190219 - New option: *Revisions->Approval->[] Include complete assembly tree when Approve the Drawing and the Linked Document*
 In the *Approve the Drawing and the Linked Document* command, switching from the selected drawing to the 1st level child related document, a new option is now available to control the level of recursion in the “Approve the Part/Assembly and all the Components” dialog. By default the new option is unchecked (no recursion)
- 20190218 - Projects: Freeze operation available
 When working with the *Projects->[X] Enable revisions for Projects* enabled, it is now possible to *RMB->Checkout/Checkin->Freeze* a project
- 20190214 - New Open option: *Open/Save->Open->[X] Never open in Silent Mode*
 By default, the PDM opens the CAD documents in "silent mode", so suppressing opening progress dialogs, warnings, etc. that may be displayed by the CAD - by checking this new option (default: unchecked), the PDM avoids any "silent mode" when opening CAD documents
Notes: with the option unchecked, it is always possible to avoid the "silent mode" by keeping pressed the CTRL key while opening
- 20190206 - New DBSE specific option: *General->More...->[X] Avoid DBSolidEdge Display Name override*
 When checked (default: unchecked), DBSolidEdge avoids any override of the Display Name of SE models. By doing this, it is possible to program the *SE Options->Helpers->Document Name Formula* with properties different from the File Name and have them be applied to the Model's new Views, using the SE command *SE->View->New Window*
Notes: **already existing model views are not automatically updated by SE and needs to be deleted**

Bugs fixing

- 20190307 - SolidWorks Integration: Preview of Drawings: the aspect ratio of Drawings was not correct
- 20190306 - Database updates: the module would display a false positive for the field PARENT_CHILD.DBW_PARENT_CHILD_REVISION to made nullable
- 20190306 - Standalone Client 64 bit: the support for localized bar menus was missing
- 20190305 - Task Manager: if the connection to the DB is down, the task manager executing engine caused a hang of the application instead of stopping the execution.
- 20190305 - Logging (Activate_Debug_Logging.vbs): with DBWARM enabled, in some cases logfiles were missing startup data
- 20190305 - Local Checkout Mode: due to a regression introduced with the fix "20190114 - Revisions: Approval: with an OnOK.LST being executed and modifying fields mapped in the file properties of a document, any modification to properties modified by the OnOK.LST was not applied in the the document archived in the .GZ file", a File Copy error message was displayed when approving
- 20190305 - Assembly duplication wizard (ADW): Fake components where not added to assembly duplication unless at least one real component was added to the duplication
- 20190228 - DBSE: it was possible to start a Workflow with an RMB click in the Edge Bar DBSE tree - *Notes:* due to a limitation, it is not possible to start life-cycle actions directly from the RMB->Checkout/Checkin menu in the Edge Bar DBSE Tree - since of this, also Workflow actions can't be started from that UI
- 20190227 - Current Project: simply answering 'NO', it was creating an entry in the *Options->User->Restore Hidden Messages...* grid
- 20190227 - Undo Checkin: the \$PRP:REVISION of a Linked Drawing was not correctly refreshed when undoing a checkin (the \$PRP:DOCUMENT.REVISION and the \$PRPSHEET:REVISION were fine)
- 20190226 - DBSolidEdge Integration: the option *Environment->Local Checkout Mode->[] Enable the Local Checkout Mode* was wrongly enabled in DBSolidEdge; a warning message is now displayed in the PDM Activity Console during the startup in case of option already checked
- 20190225 - CONFIGURATION_REVISION: Documents, in state=NEW and with CONFIGURATION_REVISION already initialized (possibly though a custom properties import), had the CONFIGURATION_REVISION field overwritten with the REVISION value, even if the *Environment->Configurations->[X] Manage Revisions of Configurations->[X] Never align Configuration Revision to File Revision* was checked
- 20190222 - DBWAclServer: during the Check-in of a file, Windows explorer synchronization was used also for some temporary files deletion, causing further slow-down in a slow network condition.
- 20190222 - Browser: Tree page window, it is fixed a problem of moved scrollbar changing from one table to another with frozen columns
- 20190222 - Admin Tools: the maximum length of a text field has been raised to 8000 characters
- 20190219 - SolidWorks Integration: the read-only notify dialog, displayed by DBWorks when attempting to modify a read-only model (released or checked-in), was causing a crash of the application when double-clicking on an annotation for modifying it - ***Notes: due to changes in the SolidWorks events sequences, DBWorks displays now such dialog when SolidWorks returns to an idle status, waiting for user inputs***
- 20190219 - SolidWorks Integration: the fix "20190124 - SolidWorks 2019: Options->Environment->[X] Use DBWorks for Searching Solidworks Components: due to a bug in the SolidWorks 2019 API, the DBWorks mini browser was no longer popping up when inserting a Part into another Part, for creating a derived Part" introduced a regression, so that the search dialog was always displayed on any file opening
- 20190218 - Link Mode: during check-in operation, it is fixed a problem of not aligned fields between model and drawing happening when editing field in the Data Input form for DOCUMENT and REVISIONS table
- 20190218 - SolidWorks integration: save-as: due to an R17 regression introduced with build 20171004, the save-as of an already opened model was not properly updating the file properties of the new saved-as model
- 20190214 - DBSE: fixed a crash happening when loading an assembly, unloading the DBSE addin, closing the SE application
- 20190212 - RMB->script execution: the internal limit of 100 scripts has been raised to 400
- 20190207 - MwPDMAPI: using BOM.CreateNewBomItem method, it is fixed a problem of DocType.GENERIC document management
- 20190205 - Browser: resizing the Tree page window, it is fixed a problem of horizontal splitter position
- 20190205 - Tree Page: Working Set and Search Grids: the current grid columns layout was not preserved when executing scripts creating a new working/search records set
- DBSE active as addin
- 20190131 - DBWRadioInput: if the user clicked on the x on top right to close the dialog the function would return true
- 20190131 - Batch Plotting Dialog: one extra hidden column was added at each display of the dialog

- 20190131 - Browser: Tree page: moving the horizontal splitter, it is fixed a problem of redrawing in case of minimized panels. Based on internal architecture, a minimum height is now ensured for each panel
- 20190130 - DBWArm: *[X] Limit Access to Documents not belonging to assigned DBWARM Projects*: all the RMB popup menu entries were available for documents not belonging to assigned DBWARM Projects - with such Documents, it is only possible to navigate with parent/child tree commands
- 20190129 - SolidWorks Integration: Windows 10 environment: Batch plotting Dialog: in specific environments, randomly, the double-click on a column header was not sorting the to-be-plotted documents grid if the column values were containing alphanumeric characters

Service Pack: 2.5 Build: 20190125

Enhancements

- 20190121 - New EVENT_LOG option: *[X] Preserve last year activity*
Due to a behavior change introduced with build 2017/06, MechWorks PDM was no longer truncating the EVENT_LOG table if the following conditions were not both true:
 - the total number of the EVENT_LOG rows was greater than what assigned in the Options->General->Event log->Max. num. of event log records [-1=infinite; 0=no event log]
 - the older EVENT_LOG event was younger than one year
 With this new option is now possible to restore the previous behavior making it unchecked (default value = checked), or force the PDM to always keep at least one year of events by checking the new option
- 20190114 - Task Manager: Shell api *Task Create*: added new optional parameter to use the previous revision for approve tasks.

The DBWSHELL Command syntax becomes:

TaskCreate <taskType> <taskWsName> <taskPriority> <execApproveScript> <approvePreviousRevision>

When the *<taskType> = 2* (Approve task), the parameter *< approvePreviousRevision>* can be provided with the possible values:

0 – Approve current revision

1 – Approve previous revision

This flag will be considered for each task action queued with the *TaskAppend* api.

- 20190109 - SolidWorks Integration only: Rename: new option *[X] Enable Assembly Traversing over the first level for in-context dependencies discovery*

When renaming an assembly, by default, for performance reasons, DBWorks never traverses down its structure over the first level.

For customers that works with in-context relations between components at levels over the first and the assembly itself, this new option allows the correct resolving of the external reference change after a Rename command.

By enabling this option, a full assembly traversing is executed by DBWorks (using the SolidWorks Document Manager component), so **a performance impact on the Rename command must be expected, especially on large assemblies**

Bugs fixing

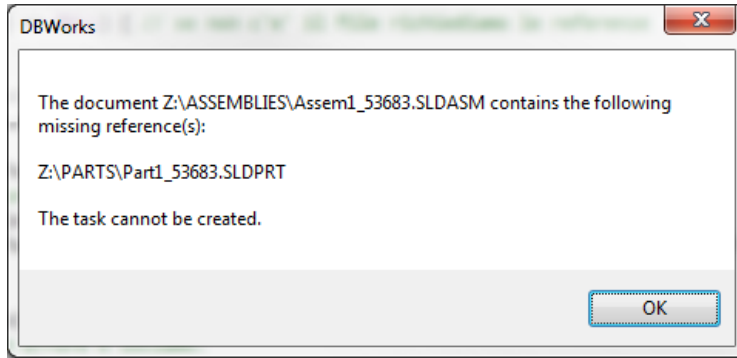
- 20190124 - SolidWorks Integration: SolidWorks 2019: *Options->Environment->[X] Use DBWorks for Searching Solidworks Components*: due to a bug in the SolidWorks 2019 API, the DBWorks mini browser was no longer popping up when inserting a Part into another Part, for creating a derived Part - a workaround has been applied, waiting for the resolution of the issue from SolidWorks
- 20190124 - Released Database Mode: with database Views with the T field explicitly declared, a SQL error was happening when updating the Released Database
- 20190121 - DBWorks: in some circumstances (i.e. in batch scripting managing a large amount of drawings) the plot on a printer of drawings having multiple sheets caused a crash
- 20190121 - SolidWorks Integration only: Check-out: for documents already opened in view-only mode there was no check to prevent SolidWorks hanging when processing such documents and it was not displayed any warning message remembering to fully load those documents before proceeding with any further modification (even included any further life cycle operations)
- 20190117 - Excel BOM and API tools: the access to the preview and to the file and document properties of SolidWorks 2019 files was missing
- 20190117 - Browser: IE Pages: when cycling on the IE Pages with the CTRL-TAB keys, sometimes a "script error" message was displayed

- 20190117 - Browser: Tree Page: Working Set grid tab: the 'Home' button (refresh queries) was not refreshing the Working Set grid (*Notes:* the Working Set grid is not fully loaded by default when the Browser reopens because it might contain thousands of records - it is up to the user to force a refresh by hitting the 'Home' button)
- 20190116 - Undo Checkin: it is fixed a problem of linked documents processing
- 20190115 - Browser: Working Set grid: with the Options->Browser behavior->[X] Avoid automatic ID column resizing: any manual resizing of the columns was not maintained after closing/reopening the Browser - *Notes:* due to some internal technical limitations, for the Working Set grid it is not possible to resize automatically the ID column
- 20190114 - Option Panel: Task Manager: a wrong tooltip was shown on some options
- 20190114 - Revisions: Approval: with an OnOK.LST being executed and modifying fields mapped in the file properties of a document, any modification to properties modified by the OnOK.LST was not applied in the the document archived in the .GZ file (*Performance notes:* due to this post-modification implemented by the OnOK.LST, a .GZ extra file update is executed by the PDM)
- 20190111 - DBWAcIserver: in some slow networking contexts, the revision commands execution was detecting wrong file locks
- 20190110 - DBSolidEdge: with the Options->Open/Save->[X] Show a warning if any no-database CAD document is opened, the warning message box was missed opening documents out of allowed directories
- 20190110 - DBSolidEdge: with the Options->General->[X] Show a warning when saving a document in a no-database directory and with the specification of managed folder (“Only store records for documents within the following directories”), the warning message box was missed saving documents out of allowed directories
- 20190109 - DBSolidEdge: working with multiple documents checked-out/opened and changed in SolidEdge, the ‘Save All’ command was updating only the active document database information
- 20190109 - Options->Projects->[X] List only Current Project in the save dialog: for any existing document, the native assigned project was not displayed in the project list so causing an unwanted adding of the saved document to the current project
- 20190109 - DBSE: The RMB->Grid Display/Print->Print ... function was causing a crash of the application
- 20190108 - Browser: working with customized dotnet controls, it is fixed a problem of wrong visualization in the Tree Page preview area when switching between “View Data” and “Revision Data” tabs
- 20190108 - Browser: Tree Page: Grids: the current grid columns sizes were not maintained when executing a search and so switching automatically on the Search grid
- 20190107 - DBWorks Drawing BOM: due to a regression introduced with R17 Service Pack: 2.2 Build: 20181012 (DBWorks Drawing BOM: Multiconfiguration support), working with documents with already placed drawing BOM, it is fixed a problem of persistence attributes management causing an error in BOM refresh when placing new BOM Table (after deleting the previous one)
- 20190107 - DBWShell("Checkout"): the OnCheckout.lst was not invoked
- 20190104 - Revisions Outputs: with the Revisions Outputs options set for creating distinct output files for each revision and for inserting the Revision Output as a Child Generic Document, the approval on a previous revision was not correctly updating the Revision Output .GZ file and DOCUMENT record
- 20190103 - Browser: after some activities with the Browser in a minimized state, when restoring the Browser, the Documents state was not always correctly updated

Service Pack: 2.4 Build: 20181221

Enhancements

- 20181217 - Task Manager: a new option has been added:
Options->User Options-> [X] Start play automatically
As dependent from the option:
Options->User Options-> [X] Act as Task Executer
When this new option is set, the PDM that acts as Task Executer, after its start-up starts automatically playing the tasks
- 20181212 - DBWAcIClient: a new parameter has been added into the the DBWConn.par file:
DBWACLCLIENT_LOG 1
This parameter controls the generation of the DBWACLClient log file. By specifying 0 as value, it is now possible to disable the generation of the file.
- 20181205 - Task Manager: since it was possible to queue tasks involving assemblies with missing references, in order to avoid to queue and execute tasks of checkin/approve involving assemblies with missing parts, a new option has been added:
Options -> Environment -> Task Manager -> [X] Check for missing references before queuing tasks
With this enabled, when queuing a new task, the Task Manager engine performs a search among the references of involved records of a task before queuing it, in order to search for missing ones. If some is found, an alert message is shown:



and the task is not queued at all.

- 20181205 - DBWorks Log Analyzer: the form contains a new Tab showing detailed information on the average and total time for most function calls, including DBWShell calls. In the tabs for functions and DBWShell invocations the same information is displayed in an added column

- 20181130 - DBWorks: new option *Drawing->TIF: create in gray scale*

A new option has been added in General->More page:

[] Drawing->TIF: create in gray scale

When such option is enabled (only in DBWorks), a gray scale TIF is created by the Revision→Outputs functions and MDConvert shell command, regardless of the value of “*Drawing → PDF/TIF: create full color PDF/TIF*” option

- 20181129 - DBWAclServer: DBWAclServerADM.txt: new keyword **@IGNORE_ERROR**

It is now possible to declare that some info/warning/error messages from a specific function with its specific severity can be ignored if they match one of the provided matching strings

Syntax:

`@IGNORE_ERROR <functionIDN> <severity> "<matching string 1>" "<matching string 2>" ... "<matching string N>"`

Example:

Suppose that you want to ignore this ACLServer message (from the DBWAclServer.log), which is actually not creating any issue to the ACL command:

...,ERROR,.....SetOwner,The call to SetNamedSecurityInfo for file/directory <\\servername\test\myFile.txt> failed with: This security ID may not be assigned as the owner of this object.

The declaration of the @IGNORE_ERROR could be like:

`@IGNORE_ERROR SetOwner ERROR "SetNamedSecurityInfo" "security ID"`

Note:

Specifying more items in the matching string set could lead to enlarge the number of messages to ignore, since the rule is verified when at least one of them is matching with the message string.

- 20181128 - DBWVisualCuesDef.txt: new keyword **@NO_AUTOMATIC_VISUAL_CUES**

For improving the performances in environments where, for example, the Task Manager is still not in production, a new keyword @NO_AUTOMATIC_VISUAL_CUES has been added to the DBWVisualCuesDef.txt Visual Cues definition file (located under SCHEMA\IMG)

When declared, the following automatic visual cues are not added automatically:

```
"@SQL9999","(DBW_ATTACHMENTS)1=1","DBW_Attachment.ico",16,3,-8,-16
"@SQL9998","(DBW_TASK_COMMANDS)A.TASK_STATE=3","taskMan_DONE.ico",16,3,-16,-32
"@SQL9997","(DBW_TASK_COMMANDS)A.TASK_STATE=6","taskMan_ERROR.ico",16,3,-16,-32
"@SQL9996","(DBW_TASK_COMMANDS)A.TASK_STATE=2","taskMan_EXEC.ico",16,3,-16,-32
"@SQL9995","(DBW_TASK_COMMANDS)A.TASK_STATE=4","taskMan_PAUSE.ico",16,3,-16,-32
"@SQL9994","(DBW_TASK_COMMANDS)A.TASK_STATE=0","taskMan_QUEUE.ico",16,3,-16,-32
"@SQL9993","(DBW_TASKS)A.TASK_STATE NOT IN(3,6,5)","taskMan_RELATED.ico",16,3,-16,-32
```

In order to enable, for example, the Visual Cues for the attachments, the corresponding line above must be added manually to the DBWVisualCuesDef.txt file BEFORE the @NO_AUTOMATIC_VISUAL_CUES keyword.

Example:

Avoid any Task Manager automatic visual cues and enable just the Attachments visual cues:

```
...
"MATINDEXGLOBAL","?*", "DBWERPStateInserted.BMP",20,1,-35,0
"PROJEKT_ART","?*", "@Cross,2,255,0,0",0,1,0,0
```

```
"REPLICATION_PARTNERS","ZENTRALE","clue_lock.bmp",20,0,0,0
;
"@SQL9999","(DBW_ATTACHMENTS)1=1","DBW_Attachment.ico",16,3,-8,-16
@NO_AUTOMATIC_VISUAL_CUES
;
```

- 20181126 - Excel BOM: The trailing zeros displayed in the BOM_POSITION field can now be made optional and thus eliminated using the option string REMOVE_TRAILING_ZEROS to be added to the parameter file describing the Excel BOM output in the PAR folder
- 20181126 - DBWArm: new option *Task Manager* -> *Set Task priority*
In the System administration section, the new option allows to control the right to set the task priority when enqueueing tasks.

Bugs fixing

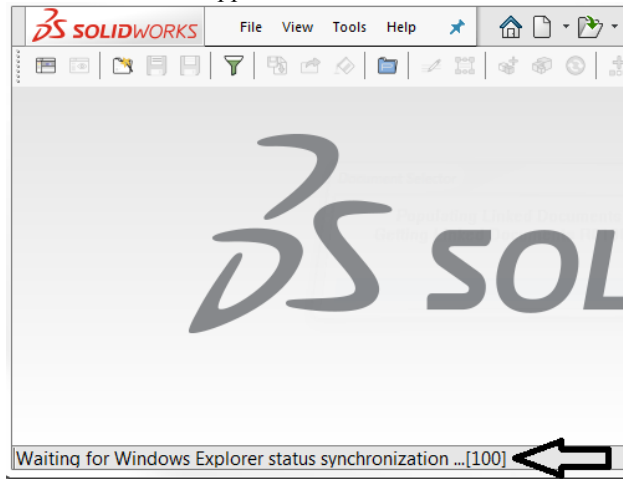
- 20181221 - MwPDMAPI: using Database.GetLinks method, a type conversion exception was fired
- 20181218 - DBInventor Drawing BOM: in case of drawing view related to assemblies with multiple Level Of Details, it is fixed a problem of empty table and wrong balloons
- 20181217 - SolidWorks Integration: Mass Properties calculation on save: fixed a performance issue appearing on SolidWorks 2019, where, after DBWorks finished to update the assembly structure after the save, with the assembly components all or partially in a writeable state, SolidWorks was hanging for completing a background task
- 20181217 - SolidWorks Integration: Mass Properties calculation on save: for child components, file properties were always updated even if not changed
- 20181217 - Full Preview: EDrawings 2019 files were not displayed
- 20181214 - Full Preview: parts and assemblies of Inventor 2019 were not properly managed
- 20181213 - Options->General->Units->[X] Use internal CAD system units for calculation->[X] Write Units in the Database: during an assembly structure full update, the units were taken always from the top-level assembly and not from the currently traversed component
- 20181213 - DBSolidEdge: using the option "*Environment->[X] Notify (only the first time) the editing of read-only components*" or "*Environment->[X] Always notify editing of read-only components*" (to manage sub-component) the Read-only component notify dialog was shown only once during application session instead of only once in document usage
- 20181212 - Remote Access: during the startup, working with configurations, the *Options->Environment->Configurations->Align fields* was altered adding REPLICATION_PARTNERS even if the DOCUMENT.REPLICATION_PARTNERS field was already specified, causing problem at database level
- 20181211 - DBSolidEdge: using the settings "*Environment->[X] Always use DBSolidEdge 'Save' and 'Save As'*" and "*[X] Use DataEntr.LST data entry script on DBSolidEdge 'Saveas...'*", it is fixed a problem of wrong file extension management in Create Part In-Place command execution
- 20181211 - SolidWorks Integration: Save as: after a Save as, even when pressing CANCEL in the Save Wizard, the current model was left in a dirty status
- 20181210 - DBWPopupHiddenCmds.txt: it was not possible to hide the OPEN command
- 20181210 - Derived Parts: when approving any Derived Part using the recursive functionality, the Derived Parts were not correctly updating their _RXX_ custom properties
- 20181210 - Get from Briefcase: Projects with names like reserved Windows file names (CON, AUX, PRN, CLOCK\$, COMx, LPTx) were causing errors when importing the Briefcase
- 20181210 - Browser: working with different tab definition file, it is fixed a problem of wrong customized dotnet control visualization in the TreePage preview area
- 20181206 - OnCheckIfMajorRev.LST: it was invoked also for documents in state NEW
- 20181205 - Task Manager: after "*Delete Task*" command run, some icons were still shown on involved records in the tree/grid
- 20181204 - Browser: working with double-monitor installation, the iconized position was not correctly restored after a move operation
- 20181203 - Briefcase: the shortcut bar buttons (put/get in/from the briefcase) were showing the Briefcase forms even if the Remote Access mode was not enabled.
- 20181203 - Options->Environment->Link Mode-> [X] Include linked documents when assigning/changing the Project: the point d. of the documentation (*Save of a document when the Options->Projects->[] Avoid automatic parent document project assignment is unchecked: any linked drawing of the child components is inserted in the current project as well*) was not working
- 20181203 - Drag&Drop: when dropping set of files from Explorer to the PDM, sometimes the documents were displaying strange STATE and REVISION info

- 20181129 - DBWArm: Group specific parameters: the DBWPopupHiddenCmds.txt file was not read from the expected group-specific DBWARM sub-folder
- 20181127 - DBWArm: User Initials: it was not fully working in DBSE

Service Pack: 2.3 Build: 20181123

Enhancements

- 20181115 - Scripting: added optional parameter *createTreeInExternalWindow* to *ChildTree* and *ParentTree* APIs
A new optional parameter is now available for the *ChildTree* and *ParentTree* APIs:
DBWShell("ChildTree/ParentTree [uniqueId [createTreeInExternalWindow]]")
createTreeInExternalWindow must be set to 1 for creating the Tree in an External Window
Example:
Sub Main()
 DBWInit(TRUE)
 DBWShell("CurrentDocument")
 uid = DBWResult("@DOCUMENT_UNIQUE_ID")
 DBWShell("ChildTree " & uid & " 1")
End Sub
- 20181108 - DBWAclServer: new option *Enable safety synch from server to client*
A new option has been added in the Options->General->DBWServer page:
[] Enable safety synch from server to client
When such option is enabled, for each ACL operation (lock, unlock, ...) it is performed an explicit synchronization between server and client machine. For performance issues, it is suggested to enable this option only in case of slow networking contexts.
Typically unexpected problems in executing revision operations (check-out, check-in, approve) are a symptom of slow networking contexts. Moreover, in such situation, a message "Waiting for Windows Explorer status synchronization ..." is also provided in the status bar at the bottom of the application window:



- 20181105 - SolidWorks integration: PARENT_CHILD_RELATION_TYPE "Envelope"
For assembly components of type "Envelope", the PARENT_CHILD_RELATION_TYPE is now filled with the value "Envelope"
- 20181105 - Hidden option NEVER_UPDATE_FILE_PROPERTIES_ON_CHECKOUT now exposed in the UI
The hidden global option NEVER_UPDATE_FILE_PROPERTIES_ON_CHECKOUT is now exposed in the Options->Revisions page
The option was introduced in R16 sp1.2 with the following Behavior Change:
20161115 - NEVER_UPDATE_FILE_PROPERTIES_ON_CHECKOUT: this new parameter, not exposed in the options dialog UI, but persistent in the shared DBWAPP.PAR Global Parameters file, when set to 1 (Default: 1) avoids any file properties operation during the CHECKOUT of a Document (in memory properties updates are always applied) - the need for such parameter is due for speeding up the CHECKOUT operation, since the only property that would be changed is the STATE property - with the latest versions of the CAD (in particular of SolidWorks), the access time for updating the file properties is slow, and so, being the CHECKOUT operation typically followed by the OPENING of the assembly in memory, the STATE property update is not strictly needed in the most of times - for restoring the previous behavior, the MechWorks PDM Administrator can set the value of the NEVER_UPDATE_FILE_PROPERTIES_ON_CHECKOUT to 0 (zero) and set the shared DBWAPP.PAR read-only again.

- 20181030 - DBWArm: new option *Never reset project queries on changed assigned Projects*
When changing the Project⇔User Assignment for a specific user, by default MechWorks PDM resets his current project queries and project selections, since the new assignment might be not compatible with the old displayed projects in the user Browser.
By enabling this new option (default value: not checked), the MechWorks PDM can disable such automatic project queries reset and have his users to continue to work with their currently displayed project selection
Of course it is up to the MechWorks PDM Administrator to decide if such option must be enabled for specific DBWArm Groups or not

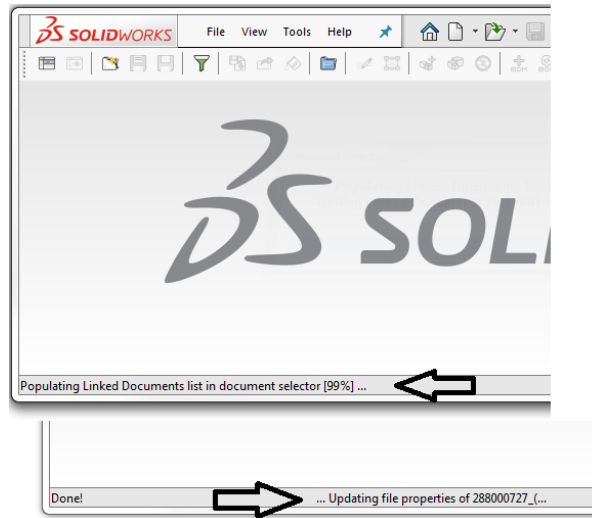
Bugs fixing

- 20181122 - Local Checkout Mode: Checkin: when running with DBWAcServer, in particular cases it was displayed the message "*The following files have been loaded from locations out-of-synch with their database state...*"
- 20181121 - DBWorks Drawing BOM: in case of multiconfiguration support, it is fixed a problem of no configuration listed in the Property Manager Page
- 20181121 - DBWorks Drawing BOM: fixed some performance issues in BOM Insert command execution
- 20181120 - DBSolidEdge: Variant Notes: the notes were refreshed also in the Background Sheets
- 20181119 - Remote Access: during the rename of a file on a site, the old file was not deleted in the foreign sites where it was replicated
- 20181119 - Browser: right side toolbar: Layout: when the displayed grid was the "Previous revisions Grid", the row header was resized in a wrong way
- 20181119 - DBInventor: the creation of a 3D PDF in German and Italian languages was not correct
- 20181115 - DBInventor: any change to a base part was not applied to the derived parts when checking-in/approve recursively
- 20181114 - Admin Tools: support for radio buttons in the Data Form was missing and has been added
- 20181114 - Data Input Form: in case of "radiobuttonhor" specification, the content is now centered vertically
- 20181109 - Advanced Filter: the projects tree pane on the left would not collapsed if the user clicked somewhere else in the control
- 20181107 - Excel BOM: Excel BOM stopped working on Windows 10 after the Update 1809 because of a bug introduced by Microsoft
- 20181107 - Tree in an External Window: fixed some UI issues, like an empty blank space at the bottom of the window, like not restoring any manually assigned new splitter position, like not maintaining the settings for the specific external window instance (each instance was affecting the other ones)
- 20181107 - Workflow Pane: the connection errors that may be displayed after leaving the pane open without any action for a long time are now displayed in the activity console
- 20181106 - Standalone: launching another Plot command after the first one was just completed, caused a hang of the application
- 20181106 - Drag&Drop: when dropping a Part/Assembly Document under a Generic Document, no check was executed for verifying if the dropping part was already a child of the Generic Document (as it was happening when dropping under an Assembly)
- 20181106 - DBInventor: FeatureManager, the resizing of the columns width was not persistent and reset when opening the pane
- 20181102 - DBInventor: if a script was meant to be executed asynchronously and in process, its concurrency model was not set to single-thread apartment (STA) giving problem in case of graphic components usage
- 20181031 - Recursive Approve: when executed from a checked-out Drawing, the Drawing was left in a checked-in state
- 20181031 - User Interface: restoring the Browser from a minimized state, using the MechWorks PDM "Browse" button, it was not refreshing the Browser content
- 20181031 - Options: Revisions: the "*Manage revisions only for documents in the following directories*" list was not able to fully display at least one item

Service Pack: 2.2 Build: 20181029

Behavior Changes

- 20180927 - Performances: during operations such as Save, Check-in, Approve made on large assemblies, the central progress bar appearance caused a big slow-down
Those messages are now printed in the status bar at the bottom of the application window:



Enhancements

- 20181022 - Recursive Checkin: new option *Except modified Checked-out documents*

A new sub-option has been added in the Revisions page:

[X] Never Open Documents On Recursive Check-in/Approval Operations

[X] Except modified Checked-out documents

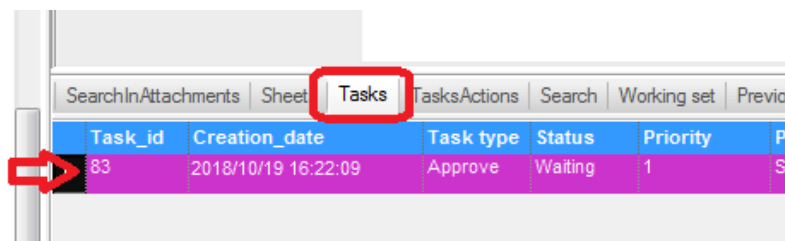
By enabling this new sub-option, any checked-out modified document is always opened/rebuilt/saved; the new option also manages any checked-out parent assembly/part of the document that has been opened/rebuilt/saved.

Notes: the feature compares the current checked-out document file date/time and the __DBWUNCHK__ prefixed uncheck-out file date/time and opens/rebuilds/saves the document if the current file date/time is newer than the related __DBWUNCHK__ file date/time

- 20181019 - Task Manager: three new entries are now available in the new shortcut bar section:



These commands require that a selection of a task in the *Tasks* tab:



1. The *Delete Task* command will clear the task from the database: if the task has still to be executed (in *Waiting* or *Paused* status), this allows the involved records to be available again for interactive commands. An alerting message will be shown to ask confirmation.

2. The *Show Task Results* is allowed only for tasks having *Completed*, *Stopped*, *Crashed* or *Failed* status and a message box will be shown with the complete log message of the execution.
 3. The *Requeue Task* command is allowed only for tasks having *Crashed* or *Failed* status and it is intended to be used when the failure cause has been fixed and the task is ready to be submitted again. Please note that the new execution will start from the failing action till the end. An alerting message will be shown to ask confirmation.
- 20181016 - DBWShell *ShowDocumentSelectorDialog*: new optional parameter *extraColumnsToShow*
 A new optional parameter *extraColumnsToShow* has been added to the *ShowDocumentSelectorDialog* DBWShell command (in order to use it, all the optional parameters must be filled with default values - see the example below)
 The new parameter allows to add extra columns to the Document Selector Dialog.
 It must be composed as a list of comma-separated database fields.
 The list of fields overrides the *Options->User Interface->Tree-> Extra Columns to show in the Trees*, if already declared.

Syntax:

```
call DBWShell("ShowDocumentSelectorDialog title message info includeLinkedDrawings checkForeignDocuments
uidList
[NoTraverseChildren[NeverReturnLinkedDocuments[uidsToBePreSelected[uidsToBePreDisabled[showParentTree[sqlFilter[extraColumnsToShow]]]]]]")
```

Example:

```
Sub main()
    DBWInit(TRUE)

    DBWShell("CurrentDocument")
    uid = DBWResult("@DOCUMENT_UNIQUE_ID")

    showLinkedDrawings = "1"
    checkForForeignDocuments = "0"
    uidsToPopulate = CStr(uid)
    noTraverse = "0"
    neverReturnLinkedDocuments = "1"
    preselectedUids = "0"
    disabledUids = "0"
    showParentTree = "0"
    sqlFilter = "'A','P','G','0'"
    extraColumnsToShow = "CATEGORY1,CATEGORY2,CATEGORY3"

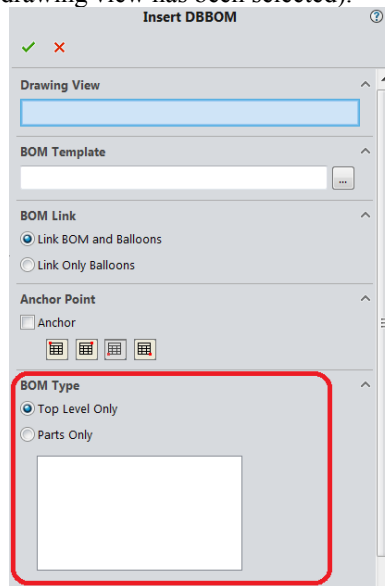
    DBWShell("ShowDocumentSelectorDialog" & _
        " " & chr(34) & "Document selector title" & chr(34) & _
        " " & chr(34) & "Document selector message" & chr(34) & _
        " " & chr(34) & "info message" & chr(34) & _
        " " & showLinkedDrawings & _
        " " & checkForForeignDocuments & _
        " " & uidsToPopulate & _
        " " & noTraverse & _
        " " & neverReturnLinkedDocuments & _
        " " & preselectedUids & _
        " " & disabledUids & _
        " " & showParentTree & _
        " " & sqlFilter & _
        " " & extraColumnsToShow )
    returnedDocumentUniqueIds = ""

    Set fs = CreateObject("Scripting.FileSystemObject")
    Set tfolder = fs.GetSpecialFolder(TemporaryFolder)
    Set a = fs.OpenTextFile( tfolder & "\" & "dbwreslt.in" , ForReading, True )
    Dim tokens
    Do While a.AtEndOfStream <> True
        line = a.ReadLine
        tokens = Split( line, "=", 2, 1)
        documentUniqueid = tokens(1)
        if returnedDocumentUniqueIds<>"" then
            returnedDocumentUniqueIds = returnedDocumentUniqueIds & ","
        end if
        returnedDocumentUniqueIds = returnedDocumentUniqueIds & documentUniqueid
    Loop
    a.Close
```

DBWMsgBox "Returned document uids =" & vbCrLf & returnedDocumentUniquelds

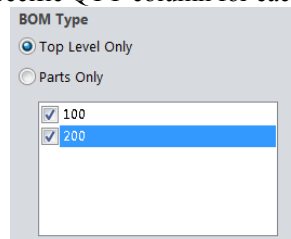
End Sub

- 20181012 - DBWorks Drawing BOM: Multiconfiguration support
Working with configurations on (Environment->Configurations->[X] Save configurations as distinct records), the BOM Insert command has been extended to support multiconfiguration in BOM computation.
The multiconfiguration allows to generate a Drawing BOM related to different configurations of the same document, with the automatic computation of the QTY column.
In the Property Manager Page, it is now possible to choose the BOM Type ("Top Level" or "Parts Only") and to select the required configurations (listed once a drawing view has been selected).

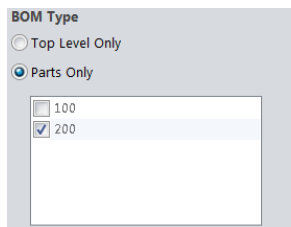


According to Bom Type specification:

- Top Level Only: it is possible to select more than one configuration; it allows to generate a Drawing BOM for the involved documents and providing a specific QTY column for each of them.



- Parts Only: only one configuration can be selected; currently it works only with the one referenced by the selected drawing view



Selecting multiple configurations, the generated Drawing BOM will contain all the information about involved documents with the QTY column specialization.

QTY-11645	QTY-11646
1	-
-	1

The QTY column header can be specialized at template document level.

An example is:

QTY_HEADER_TEMPLATE qty/{{CONFIGURATION}}

DBWShell functions.

[SolidWorks/DBWorks integration only]

With reference to this enhancement, the DBWShell changes are:

- BomInsert extension: new parameter bom_type and bom_cfg_Uids

*DBWShell("BomInsert <uniqueID> <BOM template file name> <anchor mode> <is point anchored>
<bom_insert_mode> <bom_type> <bom_cfg_Uids>")*

where <bom_type> is an integer defined as follow:

- 1: TopLevel mode (default value)
- 2: PartsOnly mode

and <bom_cfg_Uids> is a comma separated list of documents unique ids to provide multiconfigured quantity in BOM computation

- 20181012 - Scripting: new DBWShell command GetUniqueIdListFromFileName

The command returns the list of configured documents that may exist for a particular document.

Parameters:

documentFileName - full path name of the document

Results:

@DOCUMENTS_UID_LIST - a comma separated list of related documents unique ids

Example

```
' ...
DBWShell("CurrentDocument")
uid = DBWResult("@DOCUMENT_UNIQUE_ID")
fdir = DBWQueryByUid(uid,DBWLookUp("NAME_FIELD_FILE_DIRECTORY"))
fname = DBWQueryByUid(uid,DBWLookUp("NAME_FIELD_FILE_NAME"))
fullPath = fdir & fname
DBWShell("GetUniqueIdListFromFileName " & fullPath)
uids = DBWResult("@DOCUMENTS_UID_LIST")
DBWMsgBox uids
' ...
```

- 20181005 - SolidEdge/Inventor Drawing BOM: mark unballooned items.

With reference to the existing DBWorks option, a mark of ballooned/unballooned items has been implemented also for DBSolidEdge and DBInventor.

Due to specific CAD issue, we generalize the existing option in “General->Drawings->Drawing BOM-> [] Show extra info about ballooned/unballooned items” with the following behavior:

- SolidWorks: when checked (Default: unchecked), add the display of an additional (first) column to the placed Drawing BOM table to mark with a " • " the row items referenced by balloons;
- SolidEdge/Inventor: when checked (Default: unchecked), mark with " * " the BOM_POS value of the elements in the placed Drawing BOM table that do not have any associated balloons.

- 20180920 - SolidWorks Integration: new button in the Command Bar

The “Help” command is now available in the DBWorks Command Bar.

- 20180917 - New script: OnCommand.LST

When existing in the LST folder, this new script is invoked whenever a UI command is executed from the PDM

The script receives three input parameters:

@CONTEXT	the context in which the UI action is executed - the available contexts are listed in the %InstallationPath%\dbwscript.lib
@IS_POST_EVENT	0 when the script is invoked before the UI action / 1 when the script is invoked after the UI action
@COMMAND_ID	the command ID for the UI action being executed - the available command ids are listed in the %InstallationPath%\dbwscript.lib

Only when invoked with @IS_POST_EVENT=0 (pre-event), the script can output the parameter:

@OKCOMMAND with values:

"0" the command will **not** be executed
"1" the command will be executed

Notes: for DBSolidEdge and DBInventor, not all the started-from-CAD UI actions are supported

Example of LST\OnCommand.LST:

```
.vbscript
'.x64
Sub main()
```

```

DBWInit(TRUE)

context = DBWInput("@CONTEXT")
isPostEvent = DBWInput("@IS_POST_EVENT")
command_id = DBWInput("@COMMAND_ID")

DBWMsgBox "context = " & context & vbCrLf & "isPostEvent = " & isPostEvent & vbCrLf & "command_id = " &
command_id

If isPostEvent = "0" Then
    If command_id = CStr(DBW_CMD_FILE_SAVE_AS) Then
        DBWMsgBox("The file save-as is denied")
        DBWOutput "@OKCOMMAND","0",ForWriting
    ElseIf command_id = CStr(DBW_CMD_APPROVE_TREE) Then
        DBWMsgBox("The recursive Approve is denied")
        DBWOutput "@OKCOMMAND","0",ForWriting
    Else
        DBWOutput "@OKCOMMAND","1",ForWriting
    End If
End If
End Sub

```

Bugs fixing

- 20181027 - Revisions: an approve executed from the RMB->Edit->Revisions->Approve would cause a crash
- 20181024 - Tree: Drawing icons: when clicking on a Drawing Icon in a Tree that was not the Browser Tree, the preview image was still that of the related model
- 20181024 - Browser: Document Page: when opening the Browser, the Project Tree was not displayed
- 20181024 - Workflow: the *Approve* or *Reject* actions of a workflow process was not refreshing the workflow state icons in the Browser
- 20181023 - DBWShell("AddDocument"): with the option *User Interface->[X] No input save mode* being checked, no file properties were written for newly added Generic Documents
- 20181022 - DBWShell("AddDocument"): SolidEdge files: with the configurations support being activated, adding a Part or an Assembly using the AddDocument command was creating a DOCUMENT record with a not null CONFIGURATION field - this was creating some issues when opening the Part or the Assembly (Notes: Assembly FOA off-line registration is currently not supported, and the CONFIGURATION field is kept NULL even for FOA)
- 20181022 - Revisions: Recursive Approval: when approving recursively from a drawing document, it was missed the automatic switch on the 1st level child document (already implemented for the direct approve) to avoid redundant operation in document management that may cause problems at application level
- 20181018 - Save Wizard: the projects tree, when the full user name is enabled, would not filter the projects for the current user
- 20181018 - Derived Parts: due to a regression introduced with R15 Service Pack: 0.3 Build: 20150109 (*Configurations of Derived Parts The SolidWorks option "Tools→Options→External References→Load referenced documents" is no longer needed to be set to All. The Base Parts External References are now dynamically loaded/unloaded by DBWorks during the save process.*), the Base Parts were always loaded even when the option "*Derived Parts->[X] Track Configurations of Derived Parts*" was unchecked - Notes: in order to avoid any backward incompatibility, the Base Parts are now never loaded if: **1)** the option "*Derived Parts->[X] Track Configurations of Derived Parts*" is unchecked **2)** the "*SolidWorks->Tools->Options->External References->Load referenced documents*" is explicitly set to *None*
- 20181017 - Task Manager: execution of tasks involving assemblies with missing references was blocked by dialogs requiring to search for component
- 20181016 - Browser: with some specific sequences for restoring the Browser Window status after an iconized status, the Browser was no longer refreshed in the database status - it was possible to refresh the database status only closing and reopening it
- 20181015 - Remote Access: Transfer Ownership: the recursive functionality was not disabling documents in CHECKED-OUT state
- 20181012 - Admin Tools: in Project User Assignment the dialog to select a user to copy the rights from would be displayed below the main window, with the possibility of being hidden
- 20181011 - Admin Tools: among the inconsistencies it was incorrectly suggested to remove the .dll entries in the files DATAENTR2*.TXT; these dlls are used to display custom panes and should not be removed
- 20181011 - MwLicense Reconnect after timeout: some messages were missed and not localized in the activity console
- 20181010 - DBWorks Admin Tools: after running the Tool, DBWorks Stand Alone, once invoked, would remain up
- 20181010 - DBWAclServer: in some slow networking contexts, the revision commands execution was causing instabilities or crashes

- 20181009 - DBInventor: even with all the options set in a way that should prevent any Browser minimization, after any recursive revision operation (recursive checkout/checkin/approve), the Browser was minimized
- 20181008 - Performances: Script files existence cache: an internal cache is now used when looking for the script files existence for building the RMB popup menus - **keeping the CTRL key pressed while displaying the RMB popup menu allows to clear the cache, useful in the scripts development phase** (to disable such feature, declare the following line **ENABLE_UI_SCRIPT_FILES_EXISTENCE_CACHE 0** in the shared DBWConn.par)
- 20181004 - Performances: some repainting performances bottlenecks have been fixed when working with Workflow and Visual Cues (to disable such feature, declare the following line **ENABLE_UI_CONTROL_QUERIES_CACHE 0** in the shared DBWConn.par)
- 20181003 - Interface localization: the component for setting the values underwent a rewrite maintaining a similar GUI
- 20181003 - Performances: some performances bottlenecks have been fixed on the repaint of the browser when building the right click menu on the tree.
- 20181001 - DBWArm: Classes: the *Login Group* drop-down list was always empty
- 20181001 - Performances: Browser Grids repaints were always dependings from slow database connections
- 20180927 - Advanced Filter: closing and reopening the browser from the toolbar would make the Graphic User Interface go blank; you would have to move the mouse on the pane to see the components again
- 20180926 - Browser: with a particular sequence of operations (opening for the very first time the Brower on the Tree Page and, after some UI interactions, switching on the Document Page), the Document Page grids were displayed as blank windows
- 20180926 - Scripting: DBWShell("ShowChangeQuantityDialog"): it was not working when a generic item was selected at tree level
- 20180926 - DBWorks: Variant Notes: with specific relations between parts and drawings (multiple drawings for a single part or part being derived from a base part), the Variant Notes were not properly refreshed at check-in time
- 20180926 - DBSolidEdge: under certain conditions, a crash was happening when executing Recursive Approve functionality
- 20180925 - DBSolidEdge: Drawings: Fit view on checkin: the view fitting was not stable across different checkout/checkin operations
- 20180925 - Browser: option "*Use Interface->Browser Behavior->[x] Avoid automatic column resizing*": due to a regression introduced with the fix "*20180524 - Options->User Interface->Browser->[X] Avoid automatic columns resizing: the option was not working in the Working Set grid*", with the option being checked, the Search grid was not maintaining any column resizing applied by the user
- 20180925 - DBSolidEdge/DBInventor: *fixed some instabilities due to a regression introduced with previous "20180809 - Recursive Checkout/Checkin/Approve: fixed some performance issues introduced with previous builds"*
- 20180924 - DBSolidEdge/DBInventor: Remote Access: the option *Remote Access->[X] Always Refresh Documents Local Copies on Open* was not considering the to-be-opened document itself
- 20180919 - DBInventor: due to changes in the Inventor API, when working with Inventor 2019 and Inventor 2018, it was not possible to update the file properties con Content Center parts - Notes: the minimum version with which such fix can work is Inventor 2018 sp3
- 20180917 - DBInventor: under some circumstances, working with Auto CAD files, a crash was happening when executing RMB commands at Browser level

Service Pack: 2.1 Build: 20180914

Enhancements

- 20180912 - SolidWorks integration: Options->Environment->[X] Enable CTRL key for executing native CAD 'Save' A popup message >>> CTRL <<< is now displayed when the PDM recognize the CTRL key as being pressed. Notes: sometimes SolidWorks needs some rebuild/save activities before invoking the PDM save procedure, so the CTRL key, if pressed too early, may not be effective - the suggestion is to keep the CTRL key pressed until the >>> CTRL <<< popup message appears on the screen
- 20180903 - Document Selector Dialog: new script OnSelectorDialogItemsDisabler.LST
If existing in the LST directory, by using this new script it is now possible to deselect/disable items in the Document Selector Dialog.
To the script is passed a %TMP%\dbwscript.in file as follows:

@CONTEXT=<context>
@UID=<unique id #I>

@UID=<unique id #2>

...

@UID=<unique id #N>

where <context> is one of the following strings:

ReloadSkippedDocuments
BriefcaseWrite
BriefcaseRead
BriefcaseInconsistentParentChildStructure
RemoteAccessChangeOwnership
RevisionCheckout
RevisionCheckin
RevisionApprove
ShowRevisionCheckoutDialog
ShowRevisionCheckinDialog
ShowRevisionApproveDialog
WorkflowSubmitDocuments
ShowDocumentSelectorDialog

The script must output a %tmp%\dbwscript.out file as follows:

@OKPROCESSED=1

@UID=<unique id to be disabled #1>

@UID=<unique id to be disabled #2>

...

@UID=<unique id to be disabled #N>

An example of such script is the following:

```
.VBSCRIPT
'.x64
sub main()
    DBWInit(true)

    context = DBWInput("@CONTEXT")

    If context = "ReloadSkippedDocuments" Then
    ElseIf context = "BriefcaseWrite" Then
    ElseIf context = "BriefcaseRead" Then
    ElseIf context = "BriefcaseInconsistentParentChildStructure" Then
    ElseIf context = "RemoteAccessChangeOwnership" Then
    ElseIf context = "RevisionCheckout" Then
        Set fs = CreateObject("Scripting.FileSystemObject")
        Set tfolder = fs.GetSpecialFolder(TemporaryFolder)
        Set a = fs.OpenTextFile( tfolder & "\dbwscript.out", ForWriting, True )
        a.WriteLine("@OKPROCESSED" & "=" & "1")
        a.WriteLine("@UID=40757")
        a.WriteLine("@UID=40760")
        a.WriteLine("@UID=40756")
        a.WriteLine("@UID=40755")
        a.WriteLine("@UID=40759")
        a.WriteLine("@UID=40765")
        a.WriteLine("@UID=40767")
        a.WriteLine("@UID=40766")
        a.WriteLine("@UID=40768")
        a.WriteLine("@UID=40769")
        a.WriteLine("@UID=40761")
        a.Close
    ElseIf context = "RevisionCheckin" Then
    ElseIf context = "RevisionApprove" Then
    ElseIf context = "ShowRevisionCheckoutDialog" Then
    ElseIf context = "ShowRevisionCheckinDialog" Then
```

```

Elseif context = "ShowRevisionApproveDialog" Then
Elseif context = "WorkflowSubmitDocuments" Then
Elseif context = "ShowDocumentSelectorDialog" Then
End If
end sub

```

Bugs fixing

- 20180912 – Admin Tools: the field ACTION_ARG of the table EVENT_LOG would not be enlarged in Italian to adapt to large messages
- 20180912 - Scripting: previous fix “20171213 - Scripting: if a script was meant to be executed asynchronously and in process (using ‘.ASYNCH and ‘.x64 as a script header), it was anyway executed with an external 32 bit process. As a side effect it could cause crashes on specific CAD environments” was not completed because, under certain conditions, the ‘.x64 header specification was not managed
- 20180910 - DBWAclServer: in some slow networking contexts, the Rename command produced a new file with system attributes set on them
- 20180910 - DBSolidEdge: under some circumstances, a crash was happening when executing RMB commands at Browser level
- 20180906 - SolidWorks integration: due to a regression introduced with R17 sp1.8 as “20180611 - Link Mode: Performances: Multiple drawings linked to the same part/assembly: when checking-in/approving the part/assembly, for each linked drawing, each other linked drawing was processed and saved”, the Drawing Variant Notes were no longer refreshed a second time, when processing the drawing's child part/assembly - this issue was causing that any script, used in a variant note and relying on the @DOCUMENT_UNIQUE_ID field, was not executed, so the resulting variant note was blanked in the drawing - **Notes: the DBWorks Variant Notes technology has performance issues that can't be solved without redesigning the Drawing Templates using the built-in \$PRP property-based SolidWorks technology**
- 20180905 - SolidWorks integration: the 'save' of assemblies with many children was slower than R16 due to some work-in-progress messages displayed while saving child components/drawings
- 20180830 - DBSolidEdge cut-list: under certain conditions, a crash was happening when saving cut-list items
- 20180829 - Drag&Drop of fake Generic Documents: when dropping a fake Generic Document under a different Project item, the fake status was lost
- 20180827 - Browser: under certain circumstances, a message of managed exception was displayed
- 20180824 - DBSolidEdge: under certain condition, a wrong file name was displayed when opening a document in SE after a rename/replace execution
- 20180822 - DBSolidEdge: working with FOA across the network, to avoid time consuming operation during FOA creation, the custom property update is now postponed until the next save/edit command execution
- 20180822 - DBSolidEdge: fixed some performance issues in custom properties management
- 20180821 - Tree Page: Change Quantity: adding some fake quantities for a record, in some circumstances this caused two items representing that record in the tree
- 20180816 - SolidWorks integration: Variant Notes: due to the fix “20171102 - SolidWorks Integration: DBWShell("RefreshVariantNotes"): the parameter "no_save_drawing" was not honoured", some instabilities, with consequent crash of application, were detected in specific environments
- 20180816 - Browser: due to a regression introduced with the fix “20180723 - Browser: Tree Page: the Composed of and Used by grids were repainted two times when for each selected item in the Tree” there was no refresh on the Used By and Composed Of grids when changing another item in the tree or when closing/opening the browser.
- 20180816 - DBWArm: Projects<=>Users: when working with the DBWArm->[X] Use DBWArm full user name option activated, the Tree Project List was not displaying the assigned projects
- 20180731 - Replication Partners Form: the option to combine the values of the replication partners for all assembly structure was not working.
- 20180716 - Dataentr.lst: managed the case of saveAs of a file existing but not registered in the db

Service Pack: 2.0 Build: 20180810

Behavior changes

- 20180808 - Tree Page: Search and Working Set grids: being them dynamic grids, they are no longer reactivated when reopening the Browser (for the Working Set grid it is always possible to recall any of the previously created Working Sets by RMB-clicking on the tab name)

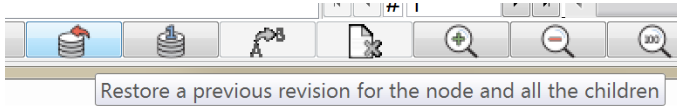
Enhancement

- 20180808 - Tree Page: Grids of Attachments: Parent Trees available in the RMB popup menus
When clicking on an Attachment, the RMB popup menu shows now the new entries:

Parent Tree

Parent Tree in an External Window

- 20180808 - DBInventor: Inventor 2019 sp1 is now supported
- 20180801 - Support for the creation of BigInt fields in the DOCUMENT table
- 20180801 - New DBWShell command: *RestoreRevision*
This new command works only with the Browser's Tree Page being activated, and with an item selected (either in the Tree or in the Grid controls).
It runs the UI command *Restore a previous revision for the node and all the children* in a modeless way.



Syntax:

DBWShell("RestoreRevision <revisionId>")
<revisionId> an existing revision for the currently selected document

Example:

```
sub main()  
    DBWInit(true)  
    DBWShell("RestoreRevision 01" )  
end sub
```

- 20180726 - Admin Tools: the limit for a new text field size in tables other than DOCUMENT has been raised from 255 to 512 characters
- 20180725 - Remote Access: Replication: Better management of revisions approved by replication partners with different Time Zones
In database replication environments where the replication partners were in different time zones, and where some shared documents were approved from any of the replication partners in different time zones, it was happening that the creation of a new revision, started from a company in a time zone different from the last approved one, was not correctly calculated for its next automatic value.
This enhancement fixes now such case, but requires the following field to be added to the DBW_COMPANY_INFO table:
DBW_REVISIONS_UNIQUE_ID_RANGE varchar(50)
such the field can be NULL
The MechWorks PDM administrator must then populate such new field in the DBW_COMPANY_INFO with the unique id range that was assigned for that specific company (see the Help topic: Advanced Features→GDE→Automatic setup procedure for enabling the DBWorks database to be replicated→Identity Seed), in the format:
<min range value>-<max range value>
- 20180723 - New sub-option: *Never calculate Mass Properties for already registered configurations*
The new sub-option:
Open/Save->Save->[X] Always calculate mass properties on save->[] Never calculate Mass Properties for already registered configurations
when checked (default: unchecked) it avoids the mass properties calculation for previously recorded configurations when the *Environment->Configurations->[X] Save all configurations automatically->[X] Save only New Configurations* option is checked.
Please note that when the new option is enabled, the *[X] Save only New Configurations* is now enabled (with the previous behaviour, when the *[X] Always calculate mass properties on save* was checked, the *[X] Save only New Configurations* was greyed because the mass properties calculation was always applied to all the configurations)

Bugs fixing

- 20180809 - DBWShell("ExpandTree"): it was no longer working from R15 sp2.0
- 20180809 - Recursive Checkout/Checkin/Approve: fixed some performance issues introduced with previous builds
- 20180809 - SolidWorks integration: fixed some instabilities introduced with previous builds
- 20180807 - Category Maker: the app would not handle correctly a wrong database reference for inhibited categories
- 20180806 - SolidWorks integration: right-side Task Pane DBWorks Browser: the *RMB->Build the BOM* command was not working (Notes: the fix implies now the full expansion of the currently selected tree node)
- 20180806 - Admin Tools: the creation of a new classes of documents for the Data Form would suggest a filter overwriting the existing filter when the family name was changed

- **20180802 - DBSolidEdge: due to internal changes applied to SolidEdge ST10 MP9, it was no more possible to save assembly structures - for customers that can't upgrade to DBSolidEdge R17 sp2.0, ST10 MP8 (or previous versions) must be reinstalled**
- 20180731 - Trees in an external window: the column sizes were not persisting across different working sessions
- 20180731 - Option *Projects->[X] Available Projects List in the Save Dialog matches Projects shown in the Tree*: when the full Project List was displayed in the Tree (so with no PARTIAL label), no projects were available in the Data Input Form drop-down project list
- 20180730 - *Increment Revision State->Checkout*: due to a regression introduced with the fix "20180619 - SolidWorks integration: Concurrent Engineering: a fix has been created for a potential crash happening when attempting to put in read-only status a document already shared and locked by someone else on the shared archive", changes applied to the currently opened read-only model were lost after a *Increment Revision State->Checkout*, executed with the model still opened
- 20180725 - SolidWorks integration: Tree Page: with the *Advanced Filter* being currently displayed, the bottom bar *Filter* functionality was locking the *Advanced Filter* (and the whole system) as soon as, after having closed in any way the *Filter* dialog, the *Advanced Filter* was clicked again for a new interaction - *Notes*: being a systemistic issue not depending from MechWorks PDM, the issue has been workarounded by pre-activating the first Tree Page tab before executing the *Filter* functionality
- 20180725 - DBSolidEdge: fixed some performance issue during save execution
- 20180723 - Advanced Filter: the project tree in the leftmost pane was not in alphabetic order
- 20180723 - Browser: Tree Page: the Composed of and Used by grids were repainted two times when for each selected item in the Tree

Service Pack: 1.9 Build: 20180720

Enhancement

- 20180719 - New DBWShell command: *ShowEditParentChildDataDialog*
When invoked, it executes the *RMB->Edit PARENT_CHILD data ...* on the selected Tree item
Syntax:
DBWShell("ShowEditParentChildDataDialog")
- 20180711 - DWG files management: added support for Autocad 2019
- 20180709 - SolidWorks integration: DBWShell("swSave"): added optional parameter *forceRebuildAll*
Syntax:
DBWShell("swSave [okUpdateLastModifiedDate [forceRebuildAll]]")
forceRebuildAll: if "1" forces the rebuild of all the geometry and configurations in the active model
Notes:
a) for using the new parameter, the *okUpdateLastModifiedDate* parameter must be passed as well
b) the new parameter can fix some missing preview issues
c) the new parameter may cause performance issues when passed
d) the new parameter can work only with the SolidWorks integration (DBWorks)
Example:
DBWShell("swSave 1 1")
- 20180704 - Tree Page: Remove Attachment: a confirmation message is displayed before the actual remove. More, a new event type has been created in order to record the operation.

Bugs fixing

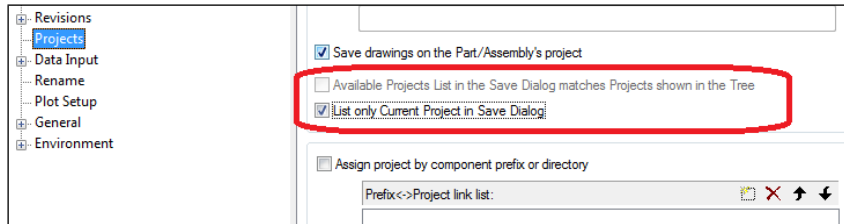
- 20180720 - The admin tool would fail to detect that the field EVENT_LOG.ACTION_ARG in older versions of the database was smaller than the actual value of 512 characters
- 20180720 - Auto checkin/checkout on save-as: the DBW_NO_LIFE_CYCLE value was not considered, leaving the opened model in a read-only status
- 20180720 - Task Manager: with both following options active:
Options->Environment->DBWArm->[X] Enable DBWARM Access Rights Manager
Options->Environment->DBWArm->[X] Use DBWARM Full User Name
or with just following option active:
Options->Environment->[X] Use full user name (only on Windows domains)
the queued task appeared as not executed by the queuing user.

- 20180719 - Options->Data Entry->Automatic Fields Population: the calculated fields were not flushed to file properties on the approval of a document
- 20180719 - Solid Edge Preview: in some circumstances for some parts the generated preview was blank.
- 20180718 - Event Log: the verification of the requirements for the “*options modifications logging*” enhancement was wrong
- 20180717 - Tree Page: Build the BOM button: when the *Environment->Derived Parts->[] Track derived parts* was unchecked, the BOM was not displaying child Generic Documents properly inserted as Bom Items (so with file extension declared in the *General->More ...->[X] Add documents as BOM Items->File extensions: option*)
- 20180716 - SolidWorks Integration: Custom Properties Import (CUSTPROP.TXT): when creating a new record for a new derived part, for which the "Insert Part->Transfer->Custom Properties" SolidWorks option was chosen while inserting the base (stock) part, the base-part-imported properties were displayed in the derived part record with a *fromparent+* prefix for each imported field - ***Notes: please note that for the newly created derived part, it will not be possible to update any property linked to the parent base part***
- 20180712 - DBCustomizer: drag'n'drop of an existing field to another view (i.e. Part to Assembly) would display an error message also if the field was added correctly
- 20180712 - DBCustomizer: when editing the field properties in the form, selecting the locked property could display a new dialog where the GUI missed all the strings/messages
- 20180711 - SolidWorks Toolbox: using the *Environment->[X] Use 'DataEntr.LST' on Toolbox Components*, the Dataentr.LST script was fired during drag instead of drop action
- 20180710 - Delete documents executed from a selection in the Tree Page's Grid: when running with the DBWArm permissions for allowing the delete also when the Browser was opened for viewing documents, the behavior between the Document Page and the Tree Page selections was different
- 20180710 - RMB->Approve: an instability in grid management, happening when approving documents, has been fixed
- 20180706 - Revisions Outputs: having these following options:
 - Options->Revisions->Outputs->[X] Insert as Child Generic Document* set
 - Options->Revisions->Outputs->[] Create distinct output files for each revision* unset
 - Options->Environment->Link Mode->[X] Manage Child Generic Document* set
when approving on a previous revision, all of older .GZ and .TREE files of that output file were deleted.
- 20180705 - PARENT_CHILD_REVISION_DIRTY_STATUS: the PDM was attempting to update the newly introduced database field even on databases not having declared that field
- 20180705 - SolidWorks integration: when opening an assembly in view-mode (mapped into the Large Design Review mode of SolidWorks), a SolidWorks help dialog was displayed
- 20180702 - Checkout of configured records: if a specific configuration was opened in memory and in a read-only state, when checking-out a different configuration, the opened model was not made writeable
- 20180628 - TaskManager: with DBWArm and option *Options->Environment->DBWArm->[X] Use DBWARM Full User Name* both active or with just *Options->Environment->[X] Use full user name (only on Windows domains)* active, the tab “Tasks” was not showing the tasks at all

Service Pack: 1.8 Build: 20180622

Enhancement

- 20180618 - *Options->Save->Calculate mass properties only when ...*
The @EXPR keyword is now supported
Example:
@EXPR = "ID=*890" AND "CATEGORY=ELECTRIC"
- 20180612 - New sub-option: *Options->Revisions->Approval->[X] Avoid 'mark as dirty' 3D Cad parent models when approving a Minor child revision*
When checked (default: not checked) and with an existing LST\OnCheckIfMajorRev.LST script, any parent document is no longer marked as 'dirty' if the currently approved revision is a *Minor Revision*
- 20180608 - Projects option panel: a new option has been added to list just the current project in the Save Dialog:
Options->Project-> [X] List only Current Project in Save Dialog
This new option has been made as alternative to the existing one:
Options->Project-> [X] Available Projects List in the Save Dialog matches Projects shown in the Tree
so there can be just one selected:



- 20180607 - Revisions: a new sub-option "[X] Allow Checkout" (Default: checked) has been added to allow the behavior of the PDM as it was before the fix applied in sp1.6 "20180503 - Recursive Checkout: the option "Revisions->[X] Never increment revision state when performing a recursive Checkin on approved documents" was ignored, so allowing a massive Checkin->Checkout in a recursive way even for documents in a Released State", so allowing the Recursive Checkout (with a consequent revision state increment) from a set of documents in RELEASED state

Bugs fixing

- 20180709 - Excel BOM: would fail to create the BOM if a column from the PARENT_CHILD table was included
- 20180622 - DBWArm: with old DB versions, there could be duplicated rows on the DBWARM table, causing slow-down at startup and potential misleading behaviour for user group profiles
- 20180622 - DBSolidEdge: previous fix "20180307 - DBSolidEdge: using SE ST9mp13/ST10mp4 or later, it is fixed a problem of SE message fired when updating custom properties under certain conditions" was not completed because the SE message was still displayed when updating BomTitle or Revision properties
- 20180621 - Inventor integration: due to instability issues found in specific environments, the Tree Page's left-bottom data grid is always reset to the "Composed Of" grid at startup
- 20180621 - Save of assemblies: documents with file names containing the % character were causing a crash (Notes: it is highly deprecated to use special characters in the file names)
- 20180620 - Web Client: the tabs used to shift the focus among the interface elements were not sequential
- 20180620 - Link Mode: DIRTY_REVISION_FLAG: Drawings: on an approve operation, the linked drawings had their DIRTY_REVISION_FLAG being reset after the Drawing Refresh action, so any drawing property/variant note was receiving a not null value for that field
- 20180619 - SolidWorks integration: Concurrent Engineering: a fix has been created for a potential crash happening when attempting to put in read-only status a document already shared and locked by someone else on the shared archive
- 20180619 - DBSolidEdge: saving a simplified assembly, it is fixed a problem of missing part registration. With this fix, the management of the "BOM_GROUP Substitute Parts for Assemblies" is also prepared for DBSE, as documented. With the DBW_BOM_GROUP_REF_ID field as prerequisite, during part registration, it is recommended to assign the field with the assembly ID for the creation of the relationships that subsequently, in the BOM generation phase, will allow to replace the data of the simplified part with the source assembly
- 20180619 - Scripting: DBWShell("WriteActualTree"): the written MAKE_BUY info was not considering the PARENT_CHILD_MAKE_BUY assignment
- 20180618 - TaskManager: in some circumstances the needed folder *DBWTaskManager*, under the USERS shared folder, was not created when missing; in such case no log file was generated for both queuing and executing tasks activities.
- 20180618 - DBWArm: denied right "View Data->[X] Open": it was possible to open a file by dragging the document outside the Browser window - Notes: with such DBWArm right being denied, it is no longer possible to drag any document outside the Browser window, no matter of the intent of the drag&drop operation
- 20180615 - Admin Tools: In check for integrity of the parameter file Tables2.dfl that control the fields visible in the grids they would raise a false exception for fields of the PARENT_CHILD table
- 20180614 - Mass Properties calculation: due to a regression introduced with the fix "20150727 - Options->Open/Save->Save->[X] Always calculate mass properties on save->[X] Calculate mass properties only when...: the option was ignored when saving assemblies", it was no longer to calculate mass properties manually when pressing the data input related button
- 20180614 - Temporary Working sets: in particular cases the restore of a previously assigned Working Set query (for example applied after a multiple editing of a set of documents) was ending with a query on the whole database
- 20180614 - SolidWorks integration: Mass Properties calculation: parts with imported geometries (due to an internal SolidWorks API bug that was returning volume and surface as a -nan (not a number) double values) were causing an INSERT SQL Statement error, so making not possible to insert the document in the database
- 20180614 - Checkout: with the "Options->Environment->[X] Always Reload Out-of-date Read-only Components" unchecked, a misleading message was shown when attempting to check-out an assembly
- 20180614 - DBSolidEdge: under some circumstances, the "Reload components" command button was wrongly disabled
- 20180612 - Plot Documents Dialog: with the option "General->[x] Use Database User Interface Localization" enabled, it was not possible to order the documents grid by double-clicking on the columns headers

- 20180612 - Remote Access: *Download of all revision files* enabled: the revision files of any related Drawing were not downloaded - this is a regression caused by the bug fix "20151111 - Remote Access: Take Ownership: Configured Models: the check for downloading all the revision files was executed for each configuration, so causing long delays when the model had many configurations and many revisions"
- 20180612 - Revision Dirty documents: Grids User Interface: when in checked-out state, the leftmost column state color was displayed as light brown (dirty color) with no inner box coloured with the CHECKED-OUT color
- 20180611 - Link Mode: Performances: Multiple drawings linked to the same part/assembly: when checking-in/approving the part/assembly, for each linked drawing, each other linked drawing was processed and saved
- 20180611 - The base path in Category Maker would not end with a backslash causing DBWorks to throw an exception for an invalid save path
- 20180611 - DWG=>PDF conversion: in B/W mode (using the monochrome.ctb/.stb style), shaded views were rendered in all black color - such views are now rendered in wireframe mode (in order to apply the fix the BIN\BWDWG2PDF\BWDwg2Pdf.exe file must have a date 20180611 or newer)
- 20180607 - Scripting: OnNewPrj.LST: the @PARENT_PROJECT_UNIQUE_ID was always 0 when the Project was created using the Toolbar button
- 20180606 - DBSolidEdge: with the DBSE-AddIn activated, it is fixed a crash happening when modifying Excel object on drawing
- 20180604 - Browser: Tree Page: Visible Tree Grids: when only the SEARCH grid was declared visible, the HIDDEN attributes programmed in the SCHEMA\Tables2.DFL were not applied

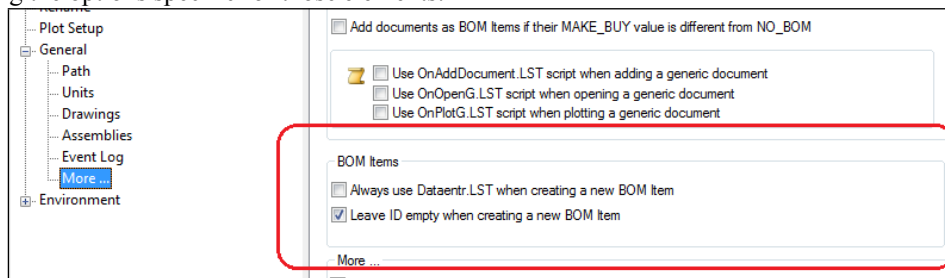
Service Pack: 1.7 Build: 20180601

Behavior changes

- 20180531 - DBInventor: due to serious API issues found in Inventor 2019 sp0 (that should be fixed in Inventor 2019 sp1), the execution on Inventor 2019 sp0 is now forbidden
- 20180528 - The DBWorks Admin Tools is now under the control of DBWARM in the section System administration
- 20180509 - The tool WebClientPinger provided with WebClient that checks constantly the state of the server now tests both components separately

Enhancement

- 20180529 - New BOM Item: a new option has been added to leave empty the ID field of the new BOM Item dialog:
Options->General->More...->[X] Leave ID empty when creating a new BOM Item
- 20180529 - Option panel: under the section *Options->General->More...*, a new group has been added, called *BOM Items*, containing the options specific for those elements:



- 20180521 - Task Manager: Shell api *Task Create*: added new optional parameter to make the *OnApprove.lst* script being executed for approve tasks.

The DBWShell Command syntax becomes:

TaskCreate <taskType> <taskWsName> <taskPriority> <execApproveScript>

When the <taskType> = 2 (Approve task), the parameter <execApproveScript> can be provided with the possible values:

- 0 – Don't run Approve script
- 1 – Run Approve script

The script will be run for each task action queued with the *TaskAppend* api.

- 20180510 - The object DBWJComp.FilterSelect, that can be used to pick a record from a long list, has been added the property AutoSelectFirstRow. When the property is set to false, no row is automatically selected after a query and the user can click OK to notify that none of the choices available was suitable

Bugs fixing

- 20180530 - DWG=>PDF conversion: fixed an issue causing some grayed objects to be partially rendered in B/W PDFs

- 20180530 - RMB->Edit/Revisions ->Approve: under some circumstances, it is fixed a problem causing a wrong message to be displayed in the Activity Console
- 20180530 - Edit Record: with reference to bug fix “20180316 - Edit Record: the option “Revisions->[] Avoid database record editing if released” unchecked, a new message is displayed when changing custom properties of an opened read-only document to warn user about properties applied only in memory, not flushed on file. Closing the document, SolidWorks integration doesn’t prompt to save changes while Inventor and SolidEdge integrations, due to API management, do”, the message was not shown when the selection was made on the DBWorks FeatureManager pane
- 20180528 - Tree: visualization of Drawing icon: due to a regression introduced with R16, the Drawing icon was not visible when more than one document was belonging to a Drawing
- 20180528 - DBWArm: due to a regression introduced with the fix “20170825 - DBWArm: it is fixed a problem of wrong user detection (a message box was displayed) based on domain names”, the automatic DBWArm Users table population, introduced with R17, was no longer working for new installations
- 20180525 - MwLicenseManager: in case of problem getting a floating license, a misleading message was shown
- 20180524 - SolidWorks Toolbox: under certain condition, the Dataentr.LST script was not managed by DBWorks
- 20180524 - Configurations: after the plotting of Drawings, it might happen that wrong configuration records were created/managed for in-memory-loaded models
- 20180524 - Get from Briefcase: some briefcase components were marked as not-revision-managed (red cross) even if they were not
- 20180524 - Options->User Interface->Tree->[X] Show descriptions in the Trees -> [X] Show ONLY description: with the option being checked, fake parts and quantities were no longer visible in the Tree
- 20180524 - Options->User Interface->Browser->[X] Avoid automatic columns resizing: the option was not working in the Working Set grid
- 20180523 - Visual Cues: with rectangular images, the visual cue was displayed enlarged in height
- 20180522 - Options->User Interface->DBManager->[X] Keep DBWorks Feature Manager synchronized with selections: with the option being checked, any selection in the DBWorks Manager was always changed to the top-level assembly
- 20180522 - Options->Environment->[X] Enable CTRL key for executing native CAD 'Save': the OnSave.LST script was fired - Notes: the option applies ONLY to the native SolidWorks Save (not to the DBWorks Toolbar Save button)
- 20180522 - Options->General->Drawings->Variant Notes->Max widths (in char) of Custom Properties: the split-words algorithm has been fixed
- 20180522 - Options: Revisions: Max. Number of Revision Records to keep: it was not possible to assign -1
- 20180522 - Integrated Advanced Filter: an exact search for a value containing an underscore ‘_’ would return no results
- 20180522 - SolidWorks Integration: imported files references (like Inventor or SolidEdge files) were not managed - Notes: any previously saved imported file reference record needs to be deleted from the database
- 20180521 - Rename Document: DBWACLServer: fixed some more “Windows Explorer synchronization“ performances issues during the rename of files
- 20180518 - About ... box dialog: in some circumstances, the build date and the application build date were different.
- 20180518 - Excel BOM Designer: the list of Excel models would be empty
- 20180516 - SolidWorks Integration: Open in Advanced Mode: after opening, the current configuration was always restored to the corresponding one selected in the database, even when creating a new configuration
- 20180516 - Task Manager: the execution of an APPROVE task having the execution script flag set, did not call the OnApprove.lst script
- 20180514 - Web Client: the upload with drag and drop of a local file unto a project would fail reporting that the parameter for the upload directory was not set
- 20180514 - Options->Revisions->Max number of revisions records to write as properties: it was not possible to write more than 10 (0->9) records
- 20180514 - No input for Checked-out Documents: when the Options->Open/Save->Save->[] always update database structure on checked-out documents save was unchecked, no input was proposed, no matter of what was the status of the Options->User Interface->[] No input on save of checked-out documents
- 20180510 - DBInventor/DBSolidEdge: in rename operation, some EVENT_LOG protocol entries were wrongly provided in case of failure

Service Pack: 1.6 Build: 20180504

Enhancements

- 20180503 - New OnOK.LST parameter: @IS_PRE_DRAWING_APPROVE_CASE
This new parameter is passed to the extra call to the OnOK.LST when invoked since of the behavior change applied in R17 sp1.2
 - 20180103 - OnOK.lst invoked one more time for Drawings when approving a Linked Drawing and when one of the following conditions:

- i) *the Options->Revisions->Approval->[X] Update drawings on revision approval is checked*
- ii) *the Options->Revisions->Approval->[X] Always Update Assembly Component Positions with Drawing BOM Positions is checked*
- iii) *A Master Drawing output must be created*
is matched.

Due to the bug fix "20180103 - Approve of a Part and its Drawing: Link Mode: the OnOK.LST was not invoked for the Drawing", the OnOK.LST script is now invoked one more time for any Linked Drawing, during the CHECKIN->APPROVE phase - this extra call allows any Drawing Annotation, linked directly to a Drawing Property, to be correctly updated by the OnOK.LST, by outputting the changed value (like a WATERMARK field use case) - if the Annotation was linked to a DOCUMENT.xxx Property, or to a Model Property, everything was working fine even without such new call

- 20180419 - New DBWCONN.PAR entry:
DBWORKS_MINIMUM_NUMBER_OF_ELEMENTS_FOR_DISPLAYING_WAIT_DIALOG
When assigned, it controls when to display the Progress Bar while updating the Custom Properties for related documents (configurations or drawings) - default value: 1 when running with the configurations being activated, 5 when not
Example:
DBWORKS_MINIMUM_NUMBER_OF_ELEMENTS_FOR_DISPLAYING_WAIT_DIALOG 50
- 20180412 - Advanced Filter: the new conditions Composed Of and Used By can be used to apply custom hierarchical conditions. The parent or child used in the query can be selected in a drop down list of IDs

Bugs fixing

- 20180503 - SolidWorks 2018 Integration: the DBWorks toolbar position/composition was not persistent across different SolidWorks sessions
- 20180503 - Recursive Checkout: the option "*Revisions->[X] Never increment revision state when performing a recursive Checkin on approved documents*" was ignored, so allowing a massive Checkin->Checkout in a recursive way even for documents in a Released State
- 20180503 - DBSolidEdge Drawing BOM: under certain conditions, a crash was happening when updating balloons
- 20180424 - Excel BOM Designer: in Italian it would not specify for a buy list that the value for the field FAI_ACQUISTA needs to be read explicitly from the table DOCUMENTO
- 20180424 - Standalone Browser 32-bit: when restoring the Browser from a minimized state, the splitters positions were lost
- 20180420 - SaveWizard: would raise an exception if the options did not contain info on the parameter paths (i.e schema folder and others)
- 20180419 - DBWArm: with the right to execute scripts being denied, it was not possible to execute the startup Autoexec.vbs script
- 20180418 - Replacing components: fixed some inconsistencies/messages between MwPDM integrations
- 20180418 - Option "*[X] Populate Child/Parent Tree in the Sub-Tree*": on the first tree created, the scroll bars were not visible
- 20180417 - DBWACLServer: a misleading "*service not updated*" message was shown on the Activity Console when trying to find the locking user of a file being renamed.
- 20180416 - Recursive Approve: if any document different from the one to be approved was opened, it was not possible to recursively approve the document from the Browser - *Notes: this is a regression introduced with R17 sp0.0*
- 20180416 - Tree Page: Multiple selection in grid: with the upper REVISIONS tab being activated, it was not possible to multiple select rows in the results grid
- 20180412 - Options: under certain conditions, it is fixed a problem causing options deactivation when no licenses are available
- 20180412 - Put into Briefcase: databases with NULL or EMPTY REPLICATION_PARTNERS values might cause a corruption of the REPLICATION_PARTNERS values themselves, and in turn, invalid Briefcases

Service Pack: 1.5 Build: 20180411

Enhancements

- 20180406 - DBWorks Drawing BOM: Scripting specification in Macro definition for Balloons
With reference to the existing General->Drawings->Drawing BOM-> Macro definition for Balloons option, it is now possible to define a script for managing balloons text.
An example of script usage is:
\$(.VBSCRIPT myScript.LST)

The managed input/output parameters are:

Input:

@DOCUMENT_FILE_NAME referenced document file name

@DOCUMENT_FILE_DIRECTORY referenced document folder name

@DOCUMENT_CONFIGURATION referenced document configuration

@DOCUMENT_UNIQUE_ID the unique id of the referenced document

Output:

@TEXT the mandatory output balloon text

- 20180405 - Ability to delete RMB search strings

Keeping the CTRL pressed while clicking on the Search button RMB popup menu will now delete the menu entry

Bugs fixing

- 20180411 - Put into Briefcase: due to the bug fix "20170209 - Remote Access: GDE: Put into Briefcase: when the 'Transfer Ownership' was activated, the REPLICATION_PARTNERS field of the Sender Company was not updated with the Sender Company value, so causing the just sent Documents to disappear from the Sender Company database", environments where the DBW_COMPANY_INFO::REPLICATION_PARTNERS value was filled with the same Company ID of the briefcase target Company, an SQL Error was happening in the Briefcase creation, causing a wrong COMPANY_ID value to be inserted as target company
- 20180411 - Remote Access: Replace References: the LAST_MODIFIED_DATE and LAST_MODIFIED_FILE_DATE were not updated
- 20180410 - Remote Access: Replace References: it was possible to replace a reference in a foreign assembly
- 20180410 - Replace References: with the OnShowPreviewLabel.LST script activated, there were some repaint issues in the dialog
- 20180410 - Scripting: using SelectQueryByUniqueId/SelectByUniqueId commands, the execution was not performed properly
- 20180405 - DBWShell("GetComponentFileNameFromSearchDialog"): the @DOCUMENT_UNIQUE_ID was 0 when FILE_NAME was NULL in the DOCUMENT record
- 20180405 - The External Advanced Filter was missing support for Right Mouse Button Popup Menu commands
- 20180405 - PARENT_CHILD_REVISION_DIRTY_STATUS: the option "Revisions->Checkin->[X] Mark as 'dirty' any Parent Document on Checkin" was not supported (Notes: for performance reasons, the Undo Checkin of a Document does not clear any DIRTY_REVISION_FLAG of its parents, because, for a correct procedure, all the children of the parents should be queried for understanding if any other child is currently invalidating a parent)
- 20180404 - Setup: due to a regression added on beta 17.1.4.93, the setup did not register the DBWAclClient.dll component, causing potential DBWAclServer functionality failures
- 20180404 - SolidWorks Integration: Variant Notes: due to a regression introduced with the fix "20171004 - Configurations: fixed many performance bottlenecks when updating the configuration specific file properties", the Variant Notes were not updated for the Drawings Child Documents, so, for example, Variant Notes Scripts depending from the @DOCUMENT_UNIQUE_ID were not invoked
- 20180404 - SolidWorks Integration: Browser displayed as a CAD Child Window: the splitters position was lost when switching between different CAD windows
- 20180403 - SolidWorks Integration: due to a regression introduced with the bug fix "20171005 - Field UPDATE_STAMP: the field was not updated when the following conditions were true: - the sub-option Environment->[X] Notify (only the first time) editing of read-only components->[] Always notify editing of read-only components was unchecked - a user has an opened assembly and was editing in-context a component - CTRL-S is pressed for saving the component - back to assembly editing - CTRL-S is pressed for saving the assembly", when saving an assembly, its writeable components were always saved once again
- 20180403 - SolidWorks Integration: even with no Mass Properties automatic calculation, with the option Environment->[X] Use SolidWorks Materials checked, the simple save of an unchanged Part with a SolidWorks material assigned it was always updating the CAD_UPDATE_STAMP value

Service Pack: 1.4 Build: 20180330

Behavior Changes

- 20180309 - DBWorks Drawing BOM: in order to improve Balloon management, the managed Balloon type set ("Item Number" and "Quantity") is now extended with the "Text" type. In addition, a new message is shown in the ActivityConsole if there are placed Balloons of unmanaged type

Enhancements

- 20180304 – SaveWizard: the sorting of categories takes into account numeric values, so 'Profiles 7 x 7' comes before 'Profiles 10 x 10', which wouldn't be the case in a simple string sort
- 20180328 - DBWShell("SetGridParameter"): new keyword @ROWHEADER for the COL_WIDTH case
It is now possible to set the Column Width of the Row Header by passing @ROWHEADER as <field name> in the SetGridParameter COL_WIDTH

Example:

DBWShell("SetGridParameter P COL_WIDTH @ROWHEADER 20")

Notes: the latest LST\SYSTEM\layout.vbs script already includes such enhancement

- 20180319 - SCHEMA\DBWSCBAR.*: added support for multiple DBWArm Groups assignment
It is now possible to assign multiple DBWArm Groups in a DBWSCBAR.* definition line by separating the group names with the special character | (vertical bar)

Example:

...

Revisions

All CheckedOut Documents,system\Show_Documents_Checked_Out.vbs,122

Current User CheckedOut Documents,system\Show_Documents_Checked_Out_by_Current_User.vbs,55

Query checked in from modification,system\Query_checked_in_from_modification.vbs,64

[DBWARM:Group:DBWorks Admin|DBWorks Designer]Query Today Released

documents,system\Query_Today_Released_documents.vbs,112,List all the Documents that have been released today

...

The enhancement is supported by the Admin Tools, where the editor changed from dropdown list for a single choice to external dialog to allow multi-selection of the DBWARM groups.

- 20180315 - Added support for new Parent-Child table field: PARENT_CHILD_REVISION_DIRTY_STATUS
When such field is declared in the Parent-Child table (same name for all the database languages), MechWorks PDM checks now for such parent-child value for determining what Child component is invalidating its Parent document (so displaying it with a violet border):

	Revision_dirty_status
Assembly1	
SW Part1	0
SW Part2	0
Assembly2["]	
SW Part1	1
SW Part2	0

When approving a document, MechWorks PDM sets to 1 all the Parent relations and resets to 0 all the Child relations of the document being approved.

When the field is NOT defined, the default date-time parent/child comparison method is used, which means that if the parent is in a Dirty status (brown border), any child that has the LAST_MODIFIED_DATE value newer than the parent is marked as invalidating document (violet border).

- 20180312 - Options->Data Input->Import Custom Properties if: support for @FILE_DIRECTORY special field name
It is now possible to assign the special field name:

@FILE_DIRECTORY

(with FILE_DIRECTORY being the database field name localized for each language)

and a list of | separated paths as field value, with the same syntax as for the General->Manage as 'Standard Parts' components with option

Example:

@FILE_DIRECTORY = M:\MyToolBoxParts*|Z:\MyOldToolBoxParts\

Bugs fixing

- 20180404 – External Advanced Filter: would not display previews of SW files in 2018 format
- 20180328 - DBWUI.MSG: UI_<name REVISIONS table> entries were not applied to the Tree Page's Previous Revisions grid field names
- 20180328 - DBWShell("SetGridParameter"): the ROW_HEIGHT parameter was not applied for row heights greater than the default

- 20180328 - Browser: with a long list of Search fields declared in the SCHEMA\Tables2.dfl, when reopening the Browser after a Search operation, occasionally an application crash would happen
- 20180326 - The form displayed by DBCustomizer to fix inconsistencies in the parameter files would freeze the application
- 20180326 - Excel BOM would not display previews if the column headers were hidden
- 20180323 - DBWorks BOM in drawing: the creation of the BOM could fail reporting an error for empty result
- 20180323 - Web Client: the script invoked to ascertain if a revision is major failed, which could fail to display the preview when this script had been activated in DBWorks
- 20180322 - Linked Database Tables: fixed the following issues:
 - .vbscript type specific <Linked Database Table Name>.<Linked Database Table Field Name>.LST/.SPT scripts were not executed (if existing, only the <DOCUMENT Table Field Name>.LST/.SPT was executed)
 - the options *Data Input->[X] Make read-only the fields with a .LST defined and Data Input->[X] Make read-only the fields with a .SPT defined* were not working for the Linked Database Table scripts
- 20180321 - DBWArm: User Initials: when working with the option *DBWArm->[X] Use DBWArm Full User Name checked*, the INITIALS were not considered in the BomTitle.txt *UserInitials@* property assignments - Notes: the DBWORKS_USERS::FULLNAME values **must be unique** in the DBWORKS_USERS table
- 20180320 - DBSolidEdge: when saving a new part, a .TXT extension was passed to the Dataentr.lst (Save Wizard) script
- 20180320 - DBInventor: using the *Options->General->[x] Only store records for documents within the following directories*, it is fixed a problem of wrong document management when saving new document under certain conditions in excluded folders
- 20180319 - DBWorks: using the Browser with Preview tab activated, a SolidWorks crash was happening when selecting cutlist item under certain conditions
- 20180316 - Edit Record: with the option *"Revisions->[] Avoid database record editing if released"* unchecked, a new message is displayed when changing custom properties of an opened read-only document to warn user about properties applied only in memory, not flushed on file. Closing the document, SolidWorks integration doesn't prompt to save changes while Inventor and SolidEdge integrations, due to API management, do
- 20180314 - SolidWorks Integration: RMB->DBWorks:Approve: when approving on a previous revision, no custom properties update was applied
- 20180314 - Excel BOM: the calculation of the total for lengths would cause the script to crash failing to generate an output
- 20180313 - Admin Tools: Project User Assignment would remove and re-add records, which in a replicated environment could cause an undue flow of data across the replication partners
- 20180313 - Admin Tools: Project User Assignment could fail to update the records after trying to enter the same record twice inside the DBW_PROJECT_USER table
- 20180313 - Mass Properties calculation: with the options *"Open/Save->Save-> [X] Exclude NO_BOM components from Mass Properties calculation"* and *"General->Assemblies->[X] Force Parent-Child Make/Buy attribute from assembly components option: '[X] Excluded from BOM'"* using NO_BOM as attribute, it is fixed a problem of wrong WEIGHT computation happening the first time an assembly is saved after changing the sub-component NO_BOM specification at CAD level (only the 1st level child components are considered)
- 20180313 - Mini-Browsers: it was not possible to drag&drop a document on the top level item of a mini-browser
- 20180312 - DBWShell("FileUnzip"): the ZIP content was flattened on the target folder - this is a regression introduced with the fix *"20170418 - Briefcase: special characters like Ø were not managed by the Briefcase exchange (Notes: a special BIN\DBWZIP7.EXE is now needed for fixing such issue - if the .EXE is not present in the BIN subfolder, no fix can be applied)"*
- 20180312 - Query Page: the "Filter" functionality was not refreshing the result Grid
- 20180308 - DBSolidEdge, DBInventor: with the *Options->Revision->[] Never Open Documents on Recursive Checkin/Approve Operations* unchecked, in case of sub-component with linked drawing, it is fixed a problem of document structure not updated correctly on recursive Checkin
- 20180307 - DBSolidEdge: using SE ST9mp13/ST10mp4 or later, it is fixed a problem of SE message fired when updating custom properties under certain conditions
- 20180307 - Advanced CR/CN Life Cycle Management Module: fixed an issue related to the RMB popup menu scripts execution
- 20180306 - Derived Parts: the newly introduced R17 support for *Profile Features (In-assembly-context face-to-sketch Parts correctly managed)*, was not considering the Derived Parts option *[X] Skip Features (by enabling this last option no Features at all (included the Profile Features) are managed)*
- 20180305 - DBWShell("Wait"): a crash was happening for large values of the time to wait for

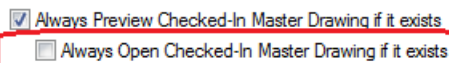
Service Pack: 1.3 Build: 20180302

Behavior Changes

- 20180212 - Document Selector Dialog: the RMB commands available at Grid level were not aligned with the RMB Tree command list, causing several instability in command execution and document management

Enhancements

- 20180301 – The Event Log Remote Access graphic dialog allows to filter the results in real time. The groupable and filterable dialog used to display the data now can now be invoked for other queries applying the filter in real time to distinct fields. The sample script provided has been simplified in order to make it easier to provide custom solutions that exploit this feature.
- 20180228 -Mass Properties calculation: new option *Open/Save->Save-> [] Exclude NO_BOM components from Mass Properties calculation*
This new option, available in Open/Save->Save page, allows to compute a parent assembly's WEIGHT property excluding NO_BOM components.
Only the 1st level child components are considered.
- 20180227 - Revision Form displays the DESCRIPTION info
When any of the options *User Interface->Tree->[X] Show description in the Trees ...* is enabled (and so assuming that the DESCRIPTION field may contain something like a PART NUMBER or related info), the Revision Form displays now at the top the same info as displayed in the Tree nodes (ID [DESCRIPTION])
- 20180226 - Advanced CR/CN Life Cycle Management Module
Added support for the advanced CR/CN Life Cycle Management Module
For a demo video please visit <https://na-ips.vids.io/videos/e89adfb6191ce6ce60/cr-and-cn-engineering-change-process-mp4>
- 20180223 - Web Client: the limitation on the number of projects that can be used for filtering has been removed. Now Web Client can apply filters on a selection of 20.000 projects maintaining a good performance in getting query results
- 20180223 - Master Drawing Mode: a new option (*Options->Environment->Master Drawing Mode -> [X] Always Open Checked-in Master Drawing if it exists*) is available to allow to open the master drawing file by default also when it's in CHECKED-IN state:



This option is a sub-option of the *Options->Environment->Master Drawing Mode -> [X] Always Preview Checked-in Master Drawing if it exists*, and it is deactivated (and unchecked) when the parent option is not checked.

- 20180220 - Drawing BOM: new option *General->Drawings->Drawing BOM-> Macro definition for BOM Table Header*.

This new option (available only in the SolidWorks Integration) allows a macro definition to be used for Drawing BOM table header specification.

The BOM header will be displayed as an additional row (top or bottom, according to table style) with merged columns.

An example of macro definition is:

Bom for \$(ID) \$(CONFIGURATION)

The option is available at user level and it applies to all BOM table ("Link BOM and Balloons" construction mode) placed in Drawing Documents

- 20180220 - DBWCONN.PAR new parameters:

DBWORKS_FORCE_HIGH_DPI_MODE

By declaring this new parameter in the DBWCONN.PAR shared parameters file, it is possible to force the High DPI mode (setting the value to 1) or the Low DPI mode (setting the value to 0) of the MechWorks PDM User Interface

When such parameter is not declared, the PDM will continue to automatically detect when using the High or Low DPI mode.

DBWORKS_FORCE_HIGH_DPI_TEXT_RATIO

When DBWORKS_FORCE_HIGH_DPI_MODE is set to 1 and the automatic scaling of texts is not good, it is possible to force the scale ratio by assigning this parameter; a typical value is in the range 1.2 -> 1.8

DBWORKS_FORCE_HIGH_DPI_ICON_RATIO

When DBWORKS_FORCE_HIGH_DPI_MODE is set to 1 and the automatic scaling of icons is not good, it is possible to force the scale ratio by assigning this parameter; a typical value is in the range 1.2 -> 1.8

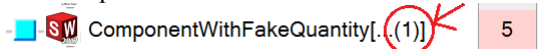
Example:

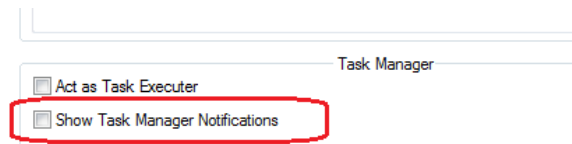
...

DBWORKS_FORCE_HIGH_DPI_MODE 1

DBWORKS_FORCE_HIGH_DPI_TEXT_RATIO 1.56

...

- 20180216 - DotNet Custom Control: it is now possible to retrieve the “Current Project” information, if available, of the opened data input dialog using the new DataForm.DataInputSelectedProject method. The method returns the current value, no automatic update mechanism is provided
- 20180208 - Drag&Drop: no input when dropping
By keeping pressed the ALT key, it is now possible to avoid the Confirmation Dialog when drag&dropping documents into the Browser Tree
- 20180207 - RMB->Workflow->Submit the Part/Assembly and all components to Workflow for the approval available for Checked-out documents
It is now possible to submit to workflow a whole assembly in checked-out state.
The functionality executes the *Check-In the Part/Assembly and all the Components* before launching the recursive *Submit to Workflow* functionality.
- 20180207 - Fake components in the Tree
The component ID text shows now also the real Assembly quantity:

- 20180207 - DBWShell("ShowConfirmationDialog"): ability to pass a file path name containing a list of Unique IDs
It is now possible to pass a file path name as argument to the ShowConfirmationDialog command, by prefixing it with the @ character and passing it in the UniqueId argument.
Example:
'x64
Sub main()
 DBWInit(True)
 call DBWShell("ShowConfirmationDialog My|Confirmation|Dialog @C:\Temp\My|Uids|List.txt")
End Sub
- 20180130 - Task Manager: a new user option is now available under the *Options->User Options-> [X] Show Task Manager Notifications*. It is used to enable/disable the notifications sent to the user once his tasks have been completed by the task executer:



- 20180130 - SolidWorks Integration: Dataentr.LST: new parameters passed: @IS_PDM_SAVE_ACTION and @IS_CAD_SAVE_ACTION
The Dataentr.LST script (Save Wizard) receives now in input two more parameters:
@IS_PDM_SAVE_ACTION it is equal to 1 when the save-as action started from a PDM 'save' button
@IS_CAD_SAVE_ACTION it is equal to 1 when the save-as action started from a CAD 'save' button

Bugs fixing

- 20180301 - Admin Tools: the Projects Documents tool would not display a message in case of insufficient rights
- 20180228 - DBWShell("TaskSubmit") always returned True even if the task was not successfully queued to the Task Manager Engine
- 20180228 - DBWShell("TaskSubmit"): when Task Manager engine is found busy, no other attempt was done and task was actually not submitted
- 20180228 - Add/Remove from Project: very long Project IDs were not correctly displayed in the dialog, so making impossible to correctly select the desired projects
- 20180227 - Browser: Search/WorkingSet Grids: closing and opening the browser did not restore the columns sizes of the tree page Search and WorkingSet grids when they were found as last used ones
- 20180227 - Variant Notes: after a save of a multi-sheet Drawings, the first sheet was always activated, no matter of what was the current sheet before the save

- 20180227 - DBWShell("WaitDialogPoll"): under Windows 10, the progress bar size was not matching the displayed percentage
- 20180206 - Web Client: support of SwDocumentMgr 2018 (64 bits only)
- 20180223 - Admin Tools > Definition of the schema of the Data Forms: editing a DataForm for a document Type (i.e. assemblies) that contained a sub-class would add a duplicate subclassing field
- 20180222 - Options->DBWArm->Default Group for new Users: a previously assigned group was not displayed when opening the options panel again
- 20180222 - DBWACLServer: fixed "Windows Explorer synchronization" performances issues during the rename of files
- 20180221 - DBWArm: Project⇔User Assignments: with a set of Projects being assigned, after creating one new project, the second one was always visually replacing the first being created (the issue was due to the Behavior Change 20171212 - *Temporary Tables in R17*) - the newly created project was displayed only after a restart of the PDM
- 20180220 - Revisions Output: 3D PDF: a red watermark "Please purchase PDF Split-Merge on ..." was displayed in the PDF
- 20180219 - SolidWorks Integration: Patterns: direction elements assigned as body edges were causing a wrong quantity for the Parts being used for the direction
- 20180219 - Scripting: the ACCEPT_PARENT_APPROVAL_IF, ACCEPT_PARENT_APPROVAL_IF_FIELD and ACCEPT_PARENT_APPROVAL_IF_VALUE options were not accessible using DBWGetOption/DBWSetOption
- 20180219 - SolidWorks Integration: Cut Lists: option *Override base part BOM quantity with Cut-List items BOM quantity*: cut-lists declared as *Excluded from BOM* were considered for overriding the Base Part quantities
- 20180215 - RMB->Open Output Files ... : when more than one output file was available, it was always opened the first one
- 20180215 - Task Manager: creating a Check-in/Approve task, it is fixed a problem of unsaved data and wrong edit component status happening when involved documents are opened and modified in memory
- 20180215 - *Open for Updating* mode: under certain conditions, a *Search* run in *Open for Updating* mode, with a pending field change, it was causing a crash
- 20180213 - Document Selector Dialog: Link Mode: with the option *[X] Include preview of Linked Documents in Recursive Revision Operation Dialog* checked, the sorting of the Document Selector Dialog content, by double-clicking on the column headers, was producing random results
- 20180213 - Task Manager: under certain conditions, the check-in/approve task execution was not managing the updated status of linked documents causing further document changes
- 20180212 - Tree: Remove from Project: the currently selected/opened project was not automatically selected in the *Remove from Project* confirmation dialog
- 20180212 - Standalone Browser: due to a regression introduced with bug fix "20171129 - *Browser: the current Projects Selection was not maintained when switching between the Tree Page and the Document Page*", after restoring the Browser from a minimized state, the Preview window was collapsed to the top of the Tree Page
- 20180209 - DBInventor: under certain conditions, it is fixed a problem causing data input form for the component to be displayed when saving an assembly
- 20180207 - The RMB->BOM->*Change Quantity* function was not considering the DBWCONN.PAR DBWORKS_MAX_BOM_POS_INDEX_VALUE DBWORKS_MAX_BOM_QUANTITY_VALUE parameters
- 20180207 - The Admin Tool offered to create the field EVENT_LOG.ACTION_ARG of the wrong size (80 instead of 512)
- 20180206 - Remote Access: the 'Take/Transfer Ownership' action, executed on a multiple selection (or Working Set) of Projects without any STATE assigned, was not working
- 20180206 - Advanced Filter: a condition of type 'between two dates' could fail in German databases depending on the international settings
- 20180205 - DBSolidEdge: it is fixed a problem causing a managed exception when selecting document components under certain conditions
- 20180201 - Web Client was not compatible with the option 'Show drawings in the Trees'
- 20180131 - Scripting: SolidWorks Integration: it is fixed a problem of wrong @DOCUMENT_FNAME, @DOCUMENT_FEXT, @DOCUMENT_FDIR parameters computation in Dataentr.lst execution happening with the "Saving Part (in External File)" command. In order to determine that the DataEntr.lst is fired specifically for this command, a new context value has been defined: @CONTEXT=GET_FILENAME_BEFORE_SAVE_VIRTUAL_COMPONENT_EXTERNALLY
- 20180130 - DBInventor: a crash was happening when starting automatically the Browser and with the last activated Tree Page's grids tab be a OnCustomQuery_xxx tab
- 20180130 - Integrated Advanced Filter: the date dialog used to set a date in custom conditions would not display entirely leaving a portion on the right side unseen

- 20180130 - Remote Access: Local Checkout Mode: the deletion in a site of a record in a Checkin state was not propagated to the shared Checkin folder in all of the remote sites where this record was replicated

Service Pack: 1.2 Build: 20180126

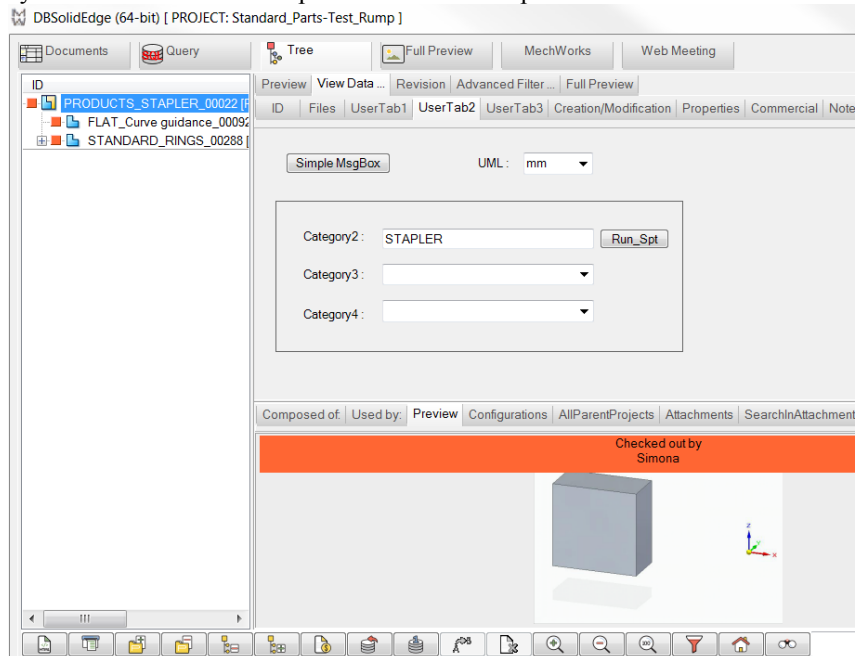
Behavior Changes

- 20180103 - OnOK.lst invoked one more time for Drawings when approving a Linked Drawing and when one of the following conditions:
 - i) the *Options->Revisions->Approval->[X] Update drawings on revision approval* is checked
 - ii) the *Options->Revisions->Approval->[X] Always Update Assembly Component Positions with Drawing BOM Positions* is checked
 - iii) A Master Drawing output must be created
 is matched.

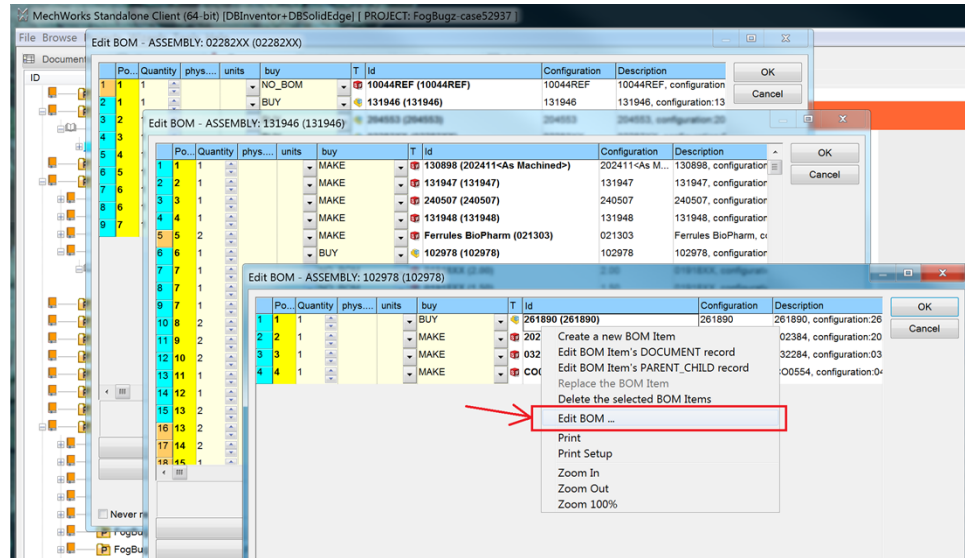
Due to the bug fix "20180103 - Approve of a Part and its Drawing: Link Mode: the OnOK.LST was not invoked for the Drawing", the OnOK.LST script is now invoked one more time for any Linked Drawing, during the CHECKIN->APPROVE phase - this extra call allows any Drawing Annotation, linked directly to a Drawing Property, to be correctly updated by the OnOK.LST, by outputting the changed value (like a WATERMARK field use case) - if the Annotation was linked to a DOCUMENT.xxx Property, or to a Model Property, everything was working fine even without such new call

Enhancements

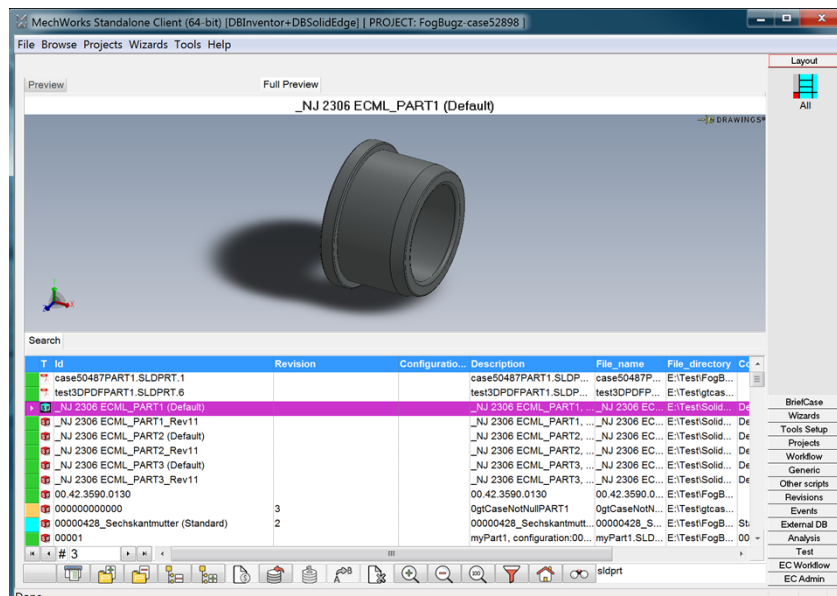
- 20180202 - Category Maker issues a warning if the base path for the paths generated are not compatible with the paths managed by DBWorks in its options
- 20180111 - DotNet Custom Control: the customized control tab defined for SCHEMA\DataEntr2.txt and SCHEMA\RevDEntr2.txt are now shown in the TreePage preview area. For the customized used control, it is recommended to rely on the DataForm.DataInputMode value to implement the related user interaction level.




- 20180111 - Edit BOM: ability to open the *Edit BOM ...* dialog from within the dialog itself
It is now possible, by selecting the *RMB->Edit BOM ...* new entry in a row of the *Edit BOM* dialog grid, to open a new instance of the *Edit BOM* dialog for the children of the selected entry.



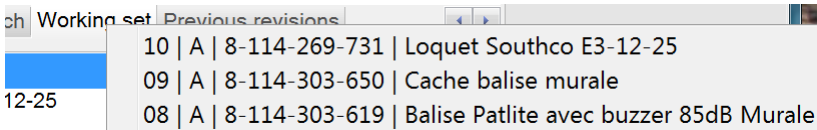
- 20180110 - Tree Page's Grid Sort
When double-clicking on a Tree Page's Grid Header cell, the Grid was sorted by that column, but the sorting was lost when requerying or when, even if leaving the same Grid active, a different selection was made on the Tree. Now the ordering is maintained when changing selection or requerying the whole Browser (house button) - the ordering is NOT maintained when:
 - close/reopen the Browser
 - change the current Grid to a different one
- 20180109 - Open Standalone Browser in Search Mode
A new option is now available under the *Options->User Interface->Browser Behavior* tab:
[X] Open Standalone Browser in Search Mode
When this option is checked, the Standalone Browser will start in the *Search Mode*, where only the *Search* grid is visible, and with just the *Preview* and *Full Preview* tabs displayed at the top.



- 20180108 - Plot of Attachments
By using the Tree Button "Plot the node document ..."  it is now possible to plot PDF/TIF documents from the *Attachments* grid - Notes: the Task Manager can not be used for this particular plotting
- 20180102 - Tree Page's Tabs selection persisting across different Browser openings

The currently selected Tree Page's Tabs are now maintained across different Browser openings - Notes: the *Advanced Filter*, *Full Preview* and *Workflow* upper tabs are never maintained

- 20171228 - Working Set History: T, ID and DESCRIPTION added to the popup menu
Everytime a new Working Set is created, the T, ID and DESCRIPTION of its first document are automatically added to the RMB popup menu showing the Working Set History



ID	Status	Description
10	A	8-114-269-731 Loquet Southco E3-12-25
09	A	8-114-303-650 Cache balise murale
08	A	8-114-303-619 Balise Patlite avec buzzer 85dB Murale

- 20180124 - Fake Drawings: some revision commands were causing a system error ("The data area passed to a system call is too small") due their application to not existing files
- 20180119 - DBInventor: Scripting: swClose command: when executed on a modified model/drawing, the CAD was prompting for the save of the model - Notes: from a script, the prompt should never appear, being fully controllable from the script a possible "save" of the model/drawing
- 20180119 - DBSolidEdge: Autocheckin/out after save-As, if the Part/Assembly had a linked Drawing no checkin/checkout was executed
- 20180118 - Options->Data Input->[X] Never overwrite imported custom properties: since of a regression introduced with build 20170622 (Option "Data Input->[X] Import custom properties as field values using mapping file SCHEMA/CUSTPROP.TXT": with the option activated, it was not possible to EDIT data of new Documents if the field was mapped in the definition file), the "Never overwrite imported custom properties" option was no longer working on a save-as with the option for creating a copy being disabled
- 20180117 - DotNet API, Initialize.StartConnection: under certain conditions, a blocking MsgBox was shown
- 20180116 - Web Client->The web page used to test the installation at the end of the setup was not compatible with the Google Chrome browser and would fail to display valid information
- 20180115 - Options->DBWArm->Default Group for new Users: the list-box was not filled with the database-existing DBWArm Groups
- 20180115 - Task Manager: Inventor and SolidEdge alerts were enabled and potentially appearing during task execution.
- 20180115 - Revisions->Approval option [] Accept approval if children are Standard Parts: the option was ignoring the FROZEN condition, so, with the FROZEN condition not activated, it was possible to approve even if the Standard Part was FROZEN
- 20180112 - MwPDM API: UserInterface.RadioCombo, UserInterface.RadioInput and UserInterface.FilterSelect. Fixed a bug happening when closing ('X') the dialog: the action is now cancelled
- 20180111 - RMB->BOM->Change Quantity: in Assembly->Part relations, it was possible to assign quantities less then the actual number of physical instances - Notes: this is a regression introduced with R11 build 20091110 (20091110 - Edit BOM/Change Quantity: for parent documents of type PART, it is now possible to assign quantities minor than the real base parts quantity - in such way it is possible to overcome to a known limitation of DBWorks, for which the part-basePart relation can create a number of instances for the base part greater than it's actual number inserted in the SolidWorks model (the issue is a known issue and may happen when specific features of the base part are inserted multiple times together with repetitions of the features themselves) - as a side effect, being the new parent-child relation created as a FAKE child relation, on the next save of the same derived part, the total quantity will be reset once again to the actual number of base parts calculated from the SW model, PLUS the existing number of fake parts assigned through the Edit BOM/Change Quantity functionality. For such reason, it is RECOMMENDED to approve the derived part model after having managed it's base-part quantities as indicated above)
- 20180109 - MACRO directive in SCHEMA\DBWRevisionsOutputFileExtensions.txt: the (Configuration) suffix was always added to the file name, no matter of the definition in the MACRO directive
- 20180108 - SolidWorks Integration: the Checkout Command Bar Button was not enabled for Assemblies and Drawings
- 20180108 - SolidWorks Integration: the Checkout Command Bar Button was enabled for Documents in RELEASED State, even if not doing any action
- 20180104 - Revisions->Checkin->[X] Mark as 'dirty' any Parent Document on Checkin: parent documents in CHECKED-OUT state were not marked as 'dirty' - Notes: the sub-option User Interface->Tree->[X] Highlight 'dirty' revision documents ... ->[X] Even for documents in CHECKED-IN state is now active also for documents in CHECKED-OUT state
- 20180104 - DBW_NO_LIFE_CYCLE: Scripting: the @popup@revisions.vbs entry for DBW_NO_LIFE_CYCLE Documents was causing that the the script above the one selected it was fired
- 20180104 - Working Set: Copy Master Drawing files to Clipboard: due to a regression introduced with the bug fix "20170828 - Master Drawing Mode: working with configurations, the RMB functionality "Working Set->Copy Master

Drawings file names to the clipboard" was copying only the 1st master drawing for each configuration to the clipboard", the functionality was no longer working with a Working Set of only Drawings

- 20180103 - Approve of a Part and its Drawing: Link Mode: the OnOK.LST was not invoked for any Linked Drawing, and so any update requested from the OnOK.LST, by outputting data depending from the STATE of the Drawing itself (like a WATERMARK field with its value depending from the STATE of the Drawing), was not correctly applied before the Drawing save, so resulting in a Drawing with:
 - a) the database correctly updated
 - b) its properties correctly set
 - c) any Annotation linked to its properties being not correctly refreshed

Service Pack: 1.1 Build: 20171222

Behavior Changes

- 20171212 - Temporary Tables in R17
For managing DBWArm Projects⇔Users search performance optimizations and local BOMs, R17 creates now the following SQL Server Global Temporary Tables:
dbo.##DBW_PU_TEMP_<userId>
dbo.##DBW_PUUUID_TEMP_<userId>
dbo.##BOM_<userId>
dbo.##BOMAUX_<userId>

Bugs fixing

- 20171219 - OnCheckIfMajorRev.LST: for Checked-out and Checked-in states, the _Rxx_ properties were displaying two minor revisions at the top, when the last one was already approved
- 20171219 - Preview of generic files: when DBWAclServer was active, in some delayed networks the console was showing a DBWAclServer error for the temporary generated pdf
- 20171213 - Scripting: if a script was meant to be executed asynchronously and in process (using ' .ASYNCH and ' .x64 as a script header), it was anyway executed with an external 32 bit process. As a side effect it could cause crashes on specific CAD environments
- 20171213 - SolidWorks Integration: Local Checkout Mode: with the option "*Environment->Local Checkout Mode->[X] Create New Files as Checked-out*" enabled, the Delete functionality was not removing files in Checkout/Checkin state, but still not approved
- 20171212 - DBWArm: CreateNewProject: an unnecessary check on all the users was executed for the Parent Project even if not assigned in the command (and so resulting in a query with PROJECT_ID=")
- 20171212 - DBWShell Scripting OnOkRev.lst: with the option *Revisions->Approval->[X] Update Approved_By and Approval_Date on Previous Revision Approval*, it is fixed a problem of wrong APPROVED_BY/APPROVED_DATE management in case of previous revision approval
- 20171212 - SolidWorks Integration: Local Checkout Mode: the option "*Environment->Local Checkout Mode->[X] Create New Files as Checked-out*" was not working when the Save action was started from the CAD
- 20171212 - Query Page: the "*RMB->Add Project to the Selection*" was displayed, even if with no effects on the current Project Selection in either the Document and Tree Pages
- 20171211 - Tree: with the option "*User Interface->Tree->[X] Expand the current project in the Project Tree and collapse all the others*", when changing the Current Project, the just assigned Current Project was rebuilt two times
- 20171211 - SolidWorks Integration: Configurations: Design Table: due to a regression introduced with the bug fix "*20161018 - SolidWorks Integration: Configurations: when deleting a configuration of read-only model (being it either in Checked-in or Released state), no warnings were displayed advising if any parent document was referencing that configuration.*", when deleting configurations from a Design Table, configured records were deleted even if in a RELEASED state
- 20171211 - Uncheckin: the restored version of the files were getting the hidden attribute set.
- 20171211 - Document Page: after a Child Tree, the Scroll Bar was not visible in the activated Tree Page
- 20171211 - Parent Tree in an External Window: it was not possible to expand the Tree items
- 20171211 - Open for Updating: Tree Page: Delete: it was not working if the "*Options->User Interface->Tree->Visible Grids*" was assigned
- 20171207 - Web Client: the two applications that can be used to cache the previews preemptively were not running. They have been ported to .NET 4
- 20171207 - BOM_GROUP Substitute Parts for Assemblies: when updating the DBW_BOM_GROUP_REF_ID field, any previously assigned relation was not removed

- 20171206 - Drawings in the Tree: a SQL Server performance issue, due to the bug fix "20171115 - Tree UI: in some cases, documents with just one Drawing were represented as having multiple drawings", has been fixed
- 20171206 - Scripting: it is fixed a problem of wrong parameter @DOCUMENT_UNIQUE_ID computation in Dataentr.lst execution happening when a component is edited in-context
- 20171206 - SolidWorks Integration: Configurations: Rename: when renaming a configured Document, the Drawings of the brother Configured Documents were not renamed
- 20171206 - Browser: it is fixed a problem causing an unmanaged exception when executing RMB->Approve on checked-out document
- 20170512 - DBWorksLogAnalyzer: support for Drag and Drop from Window Explorer displaying the content of a zip file
- 20171205 - SolidWorks Integration: Standard Parts: even with the "[X] No updates for Standard Parts" option enabled, the Command Bar Checkout button was enabled
- 20171204 - DBWArm: even with the right "[] Cannot check-in if checked-out by other" not checked, it was possible to Approve a record checked-out by someone else
- 20171204 - DBWorksLogAnalyzer: if no DBWorks Log was available in the temporary folder, clicking the Open Log button would not display the open dialog
- 20171130 - Standalone Client: with very large PARENT_CHILD extra fields (greater than 512 bytes in size), a crash was happening when visualizing those extra fields in the Tree
- 20171130 - Standalone Client: when the last applied Tree was a Child Tree, when restarting the Standalone Client, an attempt to rebuild the previously visualized Tree was executed, before displaying the Project Tree
- 20171130 - SolidWorks Integration: Derived Parts: with specific in-context assembly environment, some possible recursions were not detected, causing a SolidWorks crash
- 20171130 - Working Set->Save: the *.wks file filter was not working
- 20171129 - Browser: the current Projects Selection was not maintained when switching between the Tree Page and the Document Page
- 20171128 - Remote Access: Shared Projects: the option "Projects->[X] Always consider the Current Project as Shared" was not allowing the creation of Sub-Projects, even if the selected Project was the Current Project
- 20171128 - Workflow: Scripting: the @popup@revisions.vbs directive script was displayed even for documents with DBW_NO_LIFE_CYCLE=1
- 20171127 - Standalone Client: SolidWorks .SLDLFP files were not displayed in the preview window

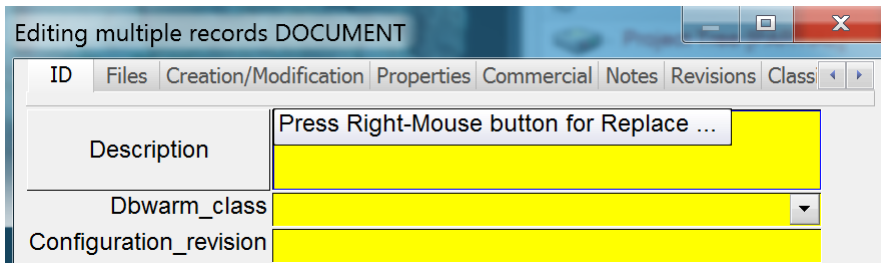
Service Pack: 1.0 Build: 20171124

Behavior Changes

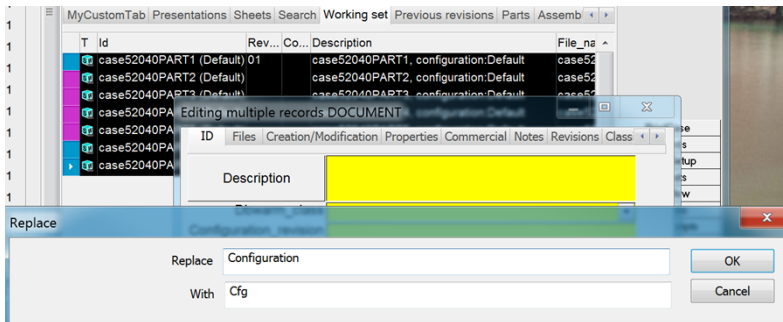
- 20171117 - MechWorks Standalone Client: due to SolidWorks 2018 limitation about win32 application (no SolidWorks Document Manager module available for 32-bit application), the R17 Setup procedure automatically installs now the MechWorks Standalone Client 64-bit version as default. For compatibility, the MechWorks Standalone Client 32-bit is still available in the installation folder even if not present in the Windows Start Menu anymore.
- 20171117 - Briefcase: the default client for the briefcase functionality is now the Standalone Client 64-bit therefore it is mandatory to install the 64-bit MSAccess ODBC driver (available from the Microsoft Support Website).
- 20171031 - DBWArm: Projects↔Users Assignment: Creation of Sub-Projects
Due to the hierarchical way of managing Projects in the PDM, by design, if a user is assigned to a Parent Project, then it has access to any Child Project (unless specific DBWArm Classes view-data-denying are programmed for each Project database record) - the behavior change applied is that when creating a Sub-Project, the User with the Parent Project assigned is now alerted/notified that a new Sub-Project is available, and he is also automatically assigned to the Sub-Project, no matter of his previous Project↔Users assignments.

Enhancements

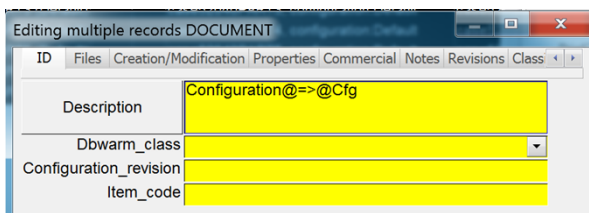
- 20171122 - Working Set Edit: *Replace* functionality
It is now possible to replace a string with another while working with the *Working Set Edit* functionality. The functionality is activated by right-mouse-clicking on the left side field name in the *Editing multiple records* form. A Tooltip is displayed on any Text-type field when mouse-overing on it.



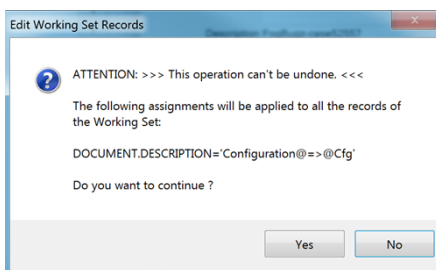
In the following example, the *Description* name has been right-mouse-clicked: the *Replace* input form is then displayed:



When confirming with [OK], a special formatted string is then created for the *Description* field:



The special sequence `@=>@` is inserted between the "to be replaced" string and the "replacing" string. Confirming with the [OK] the *Multiple records editing* form, will display as usual a further confirmation dialog:



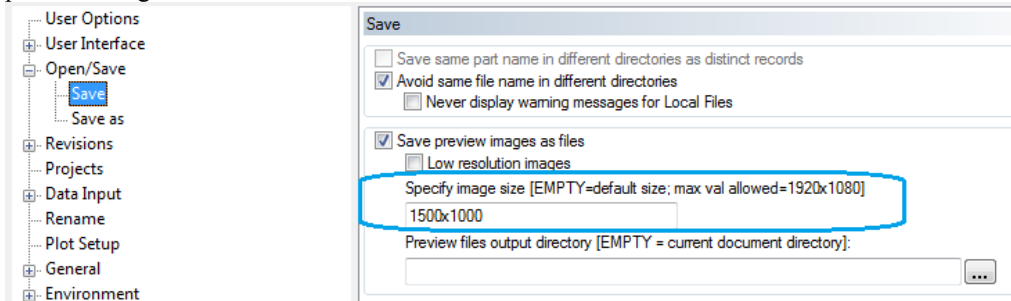
By clicking [YES], the actual *Replace* operation is executed on the Working Set document records that were allowed to be modified, replacing the "Configuration" string with the "Cfg" string:

T	Id	Rev...	Co...	Description	File_name
1	case52040PART1 (Default)	01		case52040PART1, Cfg:Default	case52040PART1
1	case52040PART2 (Default)			case52040PART2, Cfg:Default	case52040PART2
1	case52040PART3 (Default)			case52040PART3, Cfg:Default	case52040PART3
1	case52040PART4 (Default)			case52040PART4, Cfg:Default	case52040PART4
1	case52040PART5 (Default)			case52040PART5, Cfg:Default	case52040PART5
1	case52040PART6 (Default)	01		case52040PART6, Cfg:Default	case52040PART6
1	case52040PART7 (Default)	01		case52040PART7, Cfg:Default	case52040PART7

- 20171116 - DBWShell("CreatePreviewFile"): added support for DWG files
- 20171114 - Option "[X] Allow Standard Parts out of DB Directories": it can now handle also Standard Parts still not registered in the database, by intercepting the Standard Part definition based on the FILE_DIRECTORY field, and

comparing the actual file directory of the component with the pattern defined for the FILE_DIRECTORY field - *Notes:* the FILE_DIRECTORY field is normally evaluated if a database record exists for the Standard Part - in this particular case, it is evaluated against the actual file path of the Standard Part

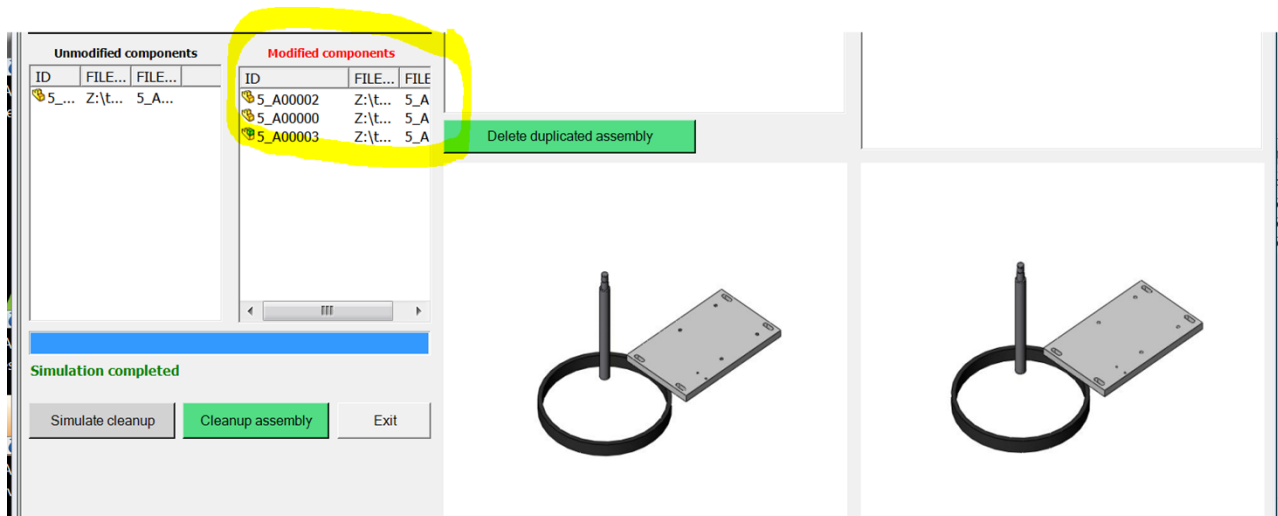
- 20171024 - Preview image save: a new option added (*Options -> Open/Save -> Save -> [X]Save preview images as files -> Specify image size [EMPTY=default size; max val allowed=1920x1080]*), used to specify the size of the preview image to save:



Leaving the field EMPTY will cause the default size on each CAD system. Maximum accepted values are 1920 pixel for width and 1080 pixel for height.

Standalone client cannot use this option.

- 20171024 – Assembly cleanup wizard: it is now possible to revert a duplicated modified component to the original file by double-clicking the component in the duplicated components list view.



- 20171019 - DBWShell("EditRecord/EditRevisionRecord"): input focus on the *fieldNameToBeDisplayed*
When passing the optional *fieldNameToBeDisplayed* , the input focus is now set automatically on it
- 20171018 - New parameter @IS_TAB_ACTIVATION for OnCustomQueryTab_xxx.LST
A new input parameter @IS_TAB_ACTIVATION is passed to the OnCustomQueryTab_xxx.LST for indicating if the tab has been just activated (value = 1) or simply requiered (value = 0)

Example:

.VBSCRIPT

sub main()

 DBWInit(TRUE)

 isTabActivation = DBWInput("@IS_TAB_ACTIVATION")

 If isTabActivation = 0 Then

 DBWMsgBox "No requery because not in tab activation"

 Exit sub

End if

...

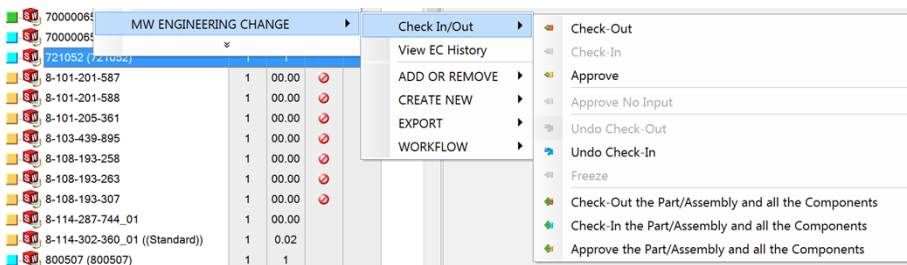
...

end sub

- 20171010 - Mini Browser windows status persistence
Any Mini Browser window position status is now restored when opening the Browser in view mode
- 20171009 - @popup@revisions.vbs: support for Revisions Popup Menu display from scripting
Under a normal scripting menu folder structure, it is now possible to create a 'fake' script named **@popup@revisions.vbs** (it is sufficient the file existence)

ADD OR REMOVE	D	5/2/2016 2:0
CREATE NEW	D	5/2/2016 2:0
EXPORT	D	5/2/2016 2:0
WORKFLOW	D	5/2/2016 2:0
@popup@revisions.vbs	A	10/9/2017 2:
View EC History.vbs	A	11/23/2015

for having the Revisions popup menu be displayed to the user:



- 20171005 - New `DBWShell("CreateRevisionOutput <uniqueId>")` command
With this new API it is possible to generate files specified in “Options->Revisions->Outputs” related to the `<unique id>` document.
Example:

```
DBWShell("GetActiveDocUniqueId")
docUID = DBWResult("@DOCUMENT_UNIQUE_ID")
DBWShell("CreateRevisionOutput " & docUID)
```

Bugs fixing

- 20171123 - Task Manager: after the cancel the submission of a new task, it was impossible to submit any new task
- 20171122 - Get from Briefcase: FILE_DIRECTORY values with an apex char (') were causing an SQL Error in the INSERT statement
- 20171121 - Option "Data Input->[X] Use only mapping file SCHEMA\CUSTPROP_INSERT.TXT for new Documents": it was not working when editing a Document
- 20171121 - Workflow Designer: the internal dialog for editing state properties would not allow to close and save from the x in the top right corner of the window and would ask instead to save in a loop
- 20171121 - DotNet Custom Control: it is fixed a problem causing wrong field data management in case of field with multiline text value
- 20171120 - Mini Browsers: the Tree Items expanded status was not preserved across multiple sessions
- 20171120 - Mini Browsers: it was not possible to create a Mini Browser Child Tree if a Child Tree was already displayed in the Main Tree
- 20171117 – Open Wizard: dwg files were not previewed
- 20171116 - DBWAclServer: random access issues were caused by commands executed on files having the “archive” attribute flag unset
- 20171115 - DBInventor: with Inventor 2018, the DBInventor Browser Pane was not populated
- 20171115 - Tree UI: in some cases, documents with just one Drawing were represented as having multiple drawings
- 20171115 - Linked Tables: with a RMB->View operation, it was not possible to VIEW a Linked Table content for a record in Released State
- 20171114 - Save Process: the “Insert Records for Dependent Documents” dialog was shown to the user when the option *Options -> User Interface -> [X] No dependents input when saving* was set and *Options -> User Interface -> [] Allow input only when traversing new parts* was set too

- 20171114 - Tree Page: after AddAttachment command completed successfully, no attachment icon was shown close to the selected record, unless just after a refresh
- 20171114 - Delete record: the delete of an attachment caused the delete of the file regardless the status of the checkbox in the Confirmation dialog
- 20171113 - DBInventor: the drop of new documents in the tree caused random crashes when the browser was not having the focus
- 20171113 - Workflow Definition: JUMP_TO BEGIN with no associated JUMP_MSG were correctly processed by the GUI Workflow Module, but it was not appearing as a REJECT entry in the RMB->Workflow popup menu
- 20171113 - Mini-Browsers: Project Trees were not supported
- 20171109 - DBSolidEdge/DBInventor Drawing BOM: it is fixed a problem of missing spaces in case of cell with multiline text values
- 20171108 - DBInventor: File->Export->CAD Format was always passing through the DBInventor save process, so, if enabled, it was showing the Save Wizard - Notes: starting from the fix "20170123 - DBInventor: Save As: with the option 'Environment->[] Always use DBInventor 'Save' and 'Save As' not enabled, no Data Input form was presented to the User when saving-as a model", it has been necessary to ALWAYS pass through the DBInventor save process, no matter if the "Environment->[] Always use DBInventor 'Save' and 'Save As'" is enabled or not enabled - because of such change, the PDM is now always considering the status of the "Enable SHIFT key for launching native CAD 'Save As...' (even if grayed) for allowing to totally exclude the DBInventor save-as process by pressing the SHIFT key
- 20171108 - Tree Performance: the suppressed components map was unnecessary built even for Parent Trees
- 20171107 - Drawing BOM: under certain conditions, there was a crash during command execution due to wrong data initialization
- 20171103 - Office file properties: the properties failed to update during all main operations (add document, check-in/out/release)
- 20171102 - SolidWorks Integration: the preview of .SLDLFP files was not working
- 20171102 - SolidWorks Integration: DBWShell("RefreshVariantNotes"): the parameter "no_save_drawing" was not honoured
- 20171101 - DWG=>PDF conversions (MDConvert command): when forcing a B/W PDF output (using monochrome.ctb or monochrome.stb plot style files) in some cases light coloured lines were not rendered in the PDF (Notes: the fix needs the update of the BIN\BWDwg2Pdf\BWDwg2Pdf.exe)
- 20171101 - DBInventor: Revisions: Max num of revisions to write as Properties: if not zero, it was causing an unnecessary properties update for every child component
- 20171031 - DBInventor: Revisions: Max num of revisions to write as Properties: if not zero, it was causing an unnecessary properties update even for Documents in State = NEW
- 20171031 - DBWArm: Project⇔Users Assignment: due to the hierarchical way of managing Projects in the PDM, if a user is assigned to a Parent Project, then it has access to any Child Project - the fix applied is that when creating a Sub-Project, the User with the Parent Project assigned is now alerted/notified that a new Sub-Project is available, and he is also automatically assigned to the Sub-Project, no matter of his previous Project⇔Users assignments.
- 20171031 - Admin Tools: Project User Assignment: the tool would not warn the user that the assignment displayed were reflecting the changes made after fixing the inconsistencies
- 20171030 - Get from Briefcase: answering 'No' to the question for continuing the import even with no documents marked with the own Company Id it was causing an hang of the system, with the Progress Bar showing the db indexing being displayed
- 20171030 - Tree Page: the activation of the script OnShowPreviewLabel.lst caused flickering on the browser window due to continuous repaints
- 20171030 - DBWArm: with a number of assigned Projects (even if previously assigned in previous sessions), under specific conditions, the Project option "[X] Available Projects List in Save Dialog matches Projects shown in the Tree" was producing strange results
- 20171026 - DBSolidEdge and Task Manager: some random crashes happened when executing task dialog was open (i.e. closing the main application with the Task Manager Executor Dialog open).
- 20171024 - DBInventor: Option Data Input->Length calculation->More sketch/dimension/equation->field data input: Assembly parameters were not managed
- 20171024 - Assembly duplication wizard: Custom properties were not updated in case autocheck/checkout was active.
- 20171023 - Admin Tools: the automatic removal of a removed field from a View would display a misleading error message while the operation is performed correctly
- 20171023 - Options "User Interface->Tree->Visible Grids": it is fixed a problem causing wrong grid display when the option is filled with a particular subset of identifiers
- 20171023 - Option "Projects->[X] Available Projects List in the Save Dialog matches Projects shown in the Tree": if a document was already registered in the database, the whole project list was always loaded in the Project List
- 20171020 - Excel BOM: the Excel sheet would display two instances of Excel when the Excel App is used to fill in the data

- 20171020 - Excel BOM: multiple values were detected for the field DRAWING.T if used directly inside a column
- 20171020 - MwLicenseManager: it is fixed a problem causing a managed exception introduced with the extension of the logging system at server side (MWLICENSEMGR_CREATE_LOG management)
- 20171019 - DBSolidEdge: in recursive check-in/approval operation, under some circumstances, it was missed the update of involved drawing documents causing wrong preview generation
- 20171019 - Option *Revisions*->[X] *Never Open Documents on Recursive Checkin/Approve Operations* ->[X] *Except Dirty Documents*: it is fixed a problem of documents not opened/updated during the recursive check-in/approval process. For DBSolidEdge, in particular, the issue should solve the problem of drawing documents out-of-date when all related documents have the FIELD_DIRTY_REVISION_FLAG=0 after command execution: since in some circumstances the recursive process may not be applied to all sub-components (like already approved documents), it is suggested to turn on also the *Revisions*->*Approval*->[X] *Mark as 'dirty' a parent revision on a child new revision approval* and the *Revisions*->*Checkin*->[X] *Mark as 'dirty' any Parent Document on Checkin* options to have additional feedback on existing dirty documents (FIELD_DIRTY_REVISION_FLAG=1)
- 20171018 - Database Integrity: the initial check for invalid T fields was not considering NULL values
- 20171018 - DBSolidEdge Preview: with Windows DPI set with a value higher than 100%, the generated preview file (with *Option* -> *Open/Save* -> *Save* -> [X] *Save preview images as files*) could include some black areas
- 20171017 - Undo Checkin: in a replicated database environment, with the Released Database support, the Undo Checkin command was causing the SQL Server error "SQL 21S01: Column name or number of supplied values does not match table definition"
- 20171017 - Options->Revisions->Checkin->[X] Mark as 'dirty' any Parent on Checkin: it is fixed a problem causing no DIRT_REVISION_FLAG management when executing the check-in from the 3D CAD command bar button
- 20171016 - Document Page: the & character, if present in a Project ID, was not displayed in the Grid Titles
- 20171016 - DWG->PDF conversion: the *grayscale.ctb* file (useful for creating PDF with a scale of gray) was not supported in the PAR\BWDwg2PdfPlotStyle.PAR file

;DBWDwg2PdfPlotStyle.PAR

grayscale.ctb

<empty line>

Notes:

the BIN\BWDwg2Pdf\BWDwg2Pdf.exe needs to be updated

- 20171013 - DBSolidEdge, DBInventor: during the startup, a misleading message is shown when the SolidWorks Document Manager is not found or not registered
- 20171011 - Options->User Interface->Tree->[X] Populate Child/Parent Tree in the Sub-Tree: sometimes, when opening the Browser, the Sub-Tree was not displayed
- 20171011 - Search: due to the R17 behavior change "*COLLATE directive used in the Search Queries - In order to improve the performance of the Search Queries, by default the LIKE operator is now prefixed with a COLLATE SQL_Latin1_General_CP1_CI_AS directive*", the number of words to be searched was lower than R16 - now if R17 detects an internal buffer limit (manifested with the warning message "*Too many keywords for the search*") for the query with the COLLATE statement, it attempts to create a (less optimized) search condition without using the COLLATE statement, so allowing the same number of words as in R16
- 20171010 - Standalone: the Plot command on files not managed by eDrawings was showing a misleading missing installation error message
- 20171010 - Configurations: fixed a performance bottleneck when using the WorkingSet->Edit and ->EditRevision commands
- 20171010 - Save Wizard: when the option to display the projects tree as in the browser is active, the dialog would throw an exception if the parameter file containing the user options could not be found
- 20171009 - Standalone Client: with some specific environments and database structures, with the DBWArm User Login activated, just after confirming the login by pressing the ENTER key, the currently displayed first Document in the 'Composed Of' grid was opened by launching its associated application
- 20171009 - Checkin: it is fixed a problem causing a wrong message to be displayed in the Activity Console ("The hidden __DBWUNCHK__ file not found") when checking-in a document under certain condition
- 20171006 - Excel BOM: the optional script to control cell values would raise an exception for text containing in the same row new line, single quote and double quote
- 20171005 - SolidWorks Integration: Field UPDATE_STAMP: the field was not updated when the following conditions were true:
 - the sub-option *Environment*->[X] *Notify (only the first time) editing of read-only components*->[] *Always notify editing of read-only components* was unchecked
 - a user has an opened assembly and was editing in-context a component
 - CTRL-S is pressed for saving the component

- back to assembly editing
- CTRL-S is pressed for saving the assembly

Notes: the fix is based on the field CAD_UPDATE_STAMP that needs to be correctly populated by DBWorks

- 20171005 - MwPDMAPI: it is fixed a problem using the WorkingSet.GetCurrentWSQuery method
- 20171004 - Save As: when the file was already existing, the update of the file properties was executed two times
- 20171004 - Configurations: fixed many performance bottlenecks when updating the configuration specific file properties
- 20171002 - Preview of eDrawings files: a performance bottleneck has been fixed (Notes: due to issues in the native eDrawings control, a temporary conversion window is now displayed)

Service Pack: 0.1 Build: 20170929

Behavior Changes

- 20170925 - Link Mode Alignment of Fields among Brother Configuration Records: in order to improve the performance of the propagation of the field alignments programmed in the Environment->Configurations options, the alignment is now performed only on the first record processed in the following functionalities:
 - Working Set Edit
 - [Edit All]: when, in the NULL fields alert dialog, multiple editing records that have one or more NULL fields to be filled before the approve of a set of brother configuration records
- 20170913 - DBWorks: the enabled SolidWorks option *Performance->No Preview during open (faster)* is not compatible if any of the PDM options *Revision->Outputs->File* or *Environment->Master Drawing Mode->Enable the Master Drawing Mode* are set. An alert is shown to the user saying that the SolidWorks option will be disabled
- 20170907 - Revision Output: when the revision output file is existing but locked exclusively by another user, instead of interrupting the generation, the PDM generates a new file with a different name (*filename._COPYDUETOLOCK_.ext*) alerting the user with a specific message and recording an event in the EVENT_LOG

Enhancements

- 20170927 - Working Set of Drawings: right-clicking→*Working Set*→*Create Working Set* any Drawing Icon on a multiple selection of Documents in the Tree Page will now create a Working Set of the Drawings related to the selected Documents
- 20170927 - MwPDMApi, UserInterface subsystem: new method ShowConfigurationRevisionDialog
- 20170927 - DWG->PDF conversion: support for automatic layout page sizes
The BIN\DBWDwg2Pdf\DBWDwg2Pdf.exe utility can now support an automatic fitting on each layout specific page size with the following combination of parameters:
 - 1) Options->General->More->[X] DWG → PDF: convert all DWG layouts must be checked
 - 2) SCHEMA\PAR\DBWDwg2PdfOptions.PAR: must contain the following lines:
 - width 0
 - height 0
- 20170925 - New *DBWShell("ShowConfigurationRevisionDialog <uniqueId>")* command
The command shows the Configuration Revision Assignment dialog.
It returns the same parameters as described in the Help file for the CONFIGURATION_REVISION.SPT script (*Programming MechWorks PDM->DBWCommandShell->Special Scripts->Data Input->CONFIGURATION_REVISION.SPT*), that are:

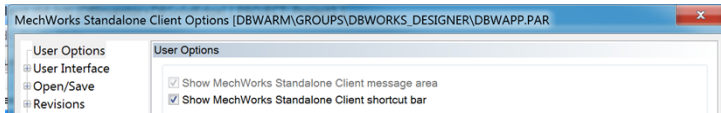
the check about the validation of the dialog:

```
@CONFIGURATION_REVISION_CANCEL_PRESSED 0/1
```

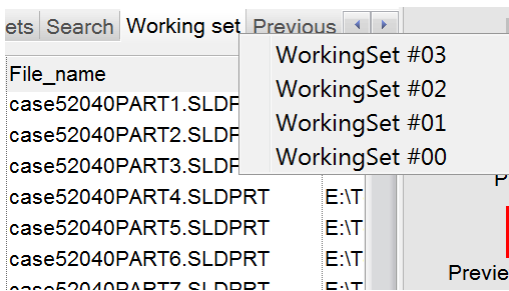
then for each configuration revision changed from the Configuration Revision AssignmentDialog:

@CONFIGURATION_REVISION_UNIQUE_ID	unique ID
@CONFIGURATION_REVISION_OLD_VALUE	old CONFIGURATION_REVISION value
@CONFIGURATION_REVISION_NEW_VALUE	new CONFIGURATION_REVISION value

- 20170913 - DBWArm Group Specific Options: the DBWAPP.PAR path is now displayed in the Options Dialog Title



- 20170913 - MwPDMApi: the new global variable DBWorksIsProcessingLinkedDocument is now available using the PDMSsystem.GetEnvironment method
- 20170912 - DBWS Shell Scripting: a new global variable named DBWorksIsProcessingLinkedDocument is available to the OnOkRev.LST script - it is useful for identifying if the OnOkRev.LST is invoked on a Linked Document
- 20170908 - Log Analyzer: the options that differ from the standard distribution are being highlighted; an additional filter allows to display only the options that differ from the standard distribution
- 20170905 - Tree Page: Working Set History available on RMB Menu
It is now possible to right-click on the "Working Set" tab label and have displayed a popup menu with the latest 20 Working Sets being created - by selecting a previous Working Set, it will be activated with no changes to the order, until a new Working Set will be created.



- 20170905 - ALTPREVIEW.TXT: MAXSIZE parameter
It is now possible to assign a MAXSIZE parameter for avoiding the preview when a certain file with the assigned extension has a size greater than the assigned parameter.

The syntax is:

<extension>

<alternate extension>/MAXSIZE=<max size in bytes>

It is useful to assign the same extension for limiting the preview of a certain class of files.

Example:

Let limit the preview of files with extensions ".AI" when such files are larger than 1Mb

...

AI

AI/MAXSIZE=1000000

...

Bugs fixing

- 20170929 - Full Preview: fixed instabilities and various issues related to the Document Page
- 20170929 - Full Preview: in the Document Page, a message about "stay or leave the page" was displayed when switching between documents
- 20170929 - Save Wizard: the project tree would not display the projects in alphabetic order if only the description is displayed
- 20170928 - MechWorks Standalone Client x64: it was not able to display the static preview of SolidEdge files when the SolidEdge Free Viewer was installed
- 20170928 - SolidWorks Integration: a Custom Properties access performance bottleneck, happening when the _RXX_ properties were enabled and the model had multiple configurations, has been fixed
- 20170927 - Increment Revision State: with model with many configurations, the physical custom properties update process was inefficient
- 20170927 - DBSolidEdge/DBInventor: it is fixed a problem of wrong properties management when executing RMB->Edit Record from the root item in the the Feature Manager Tab
- 20170926 - Replace Component dialog: eDrawings buttons were enabled in CAD applications different from SolidWorks

- 20170925 - CONFIGURATION_REVISION.SPT script: the @CONFIGURATION_REVISION_CANCEL_PRESSED parameter was never passed to the script
- 20170925 - Option "Data Input->[X] Avoid duplicated IDs": it was incorrectly checking for duplicated IDs when traversing an assembly structure with particular set of options
- 20170925 - Options->Environment->Scripts: starting from the "[X] Use OnUpdateDatabaseForOpenedDocument.LST ..." row, script activations were displayed shifted by one row
- 20170922 - DBInventor: with the options "Open/Save->[X] Always calculate mass properties on save" and "Revisions->Checkin->[X] Always calculate mass properties when doing a check-in" checked, many messages were displayed by Inventor when executing a recursive check-in operation
- 20170921 - Excel BOM: the script for the parameter 'cell value handler' would raise a exception for text values containing a new line character (values displayed on more than one row)
- 20170914 - Tree Page: clicking to the Expand button was expanding the selected project without refreshing it
- 20170913 - SolidWorks Integration (DBWorks): with the Save Wizard activated and the option " Environment->[X] Always use DBWorks 'Save' and 'Save As' -> [X]] Use 'DataEntr.LST' on Automatically Created Components " activated as well, the RMB->Make Independent functionality executed on an instance of a SolidWorks Assembly Component was not invoking the Save Wizard - Notes: the support for the RMB->Make Independent needs the activation of both the "Environment->[X] Always use DBWorks 'Save' and 'Save As' -> [X]] Use 'DataEntr.LST' on Automatically Created Components" and of the "Open/Save->Save As->[X] Use DataEntr.LST data entry script on 'Save as ...'"
- 20170913 - Browser: Remove the node and all the children from Project: with the option User Interface - > Tree -> [X] Show descriptions in the Project Tree, the project entries were not properly formatted as ID [DESCRIPTION] in the project selector
- 20170913 - Local Checkout Mode: when checking-in a model, a warning message about files been loaded from wrong locations was displayed by mistake
- 20170912 - DBWShell: the global variable DBWorksBatchOperationDocumentsCounter was always zero
- 20170912 - DBWArm Class: it was still possible to create Trees, Working Sets and to copy data in the Clipboard for Documents with the "View Data->[X] View Data" DBWArm Right being denied
- 20170912 - Working Set Edit: a message for saving the current Filter was displayed by mistake
- 20170912 - DBSolidEdge: with the sub-option "Open/Save->Save options -> [X] Show a warning if a component is missing - > [X] Consider also hidden component" checked, it is fixed a problem of wrong sub-assembly registration when saving documents
- 20170911 - Administrative Tools: The creation of a released database would fail using the ODBC driver 13 for SQL Server
- 20170911 - Administrative Tools: Add Field to DOCUMENT table: the field would not be automatically added also to the RELEASED_DOCUMENT table
- 20170908 - Administrative Tools: Projects Documents: the tool displayed in the left section buttons too small to contain the text; in case of multiple selections in the grid the color changed making the text of the grid hard to read
- 20170908 - Administrative Tools: full support for managing locked fields in Data Form for specific DBWARM groups was missing
- 20170907 - SolidWorks Integration: on a particular Sheet Metal Part, the check for feature errors was causing a crash of SolidWorks
- 20170906 - SolidWorks Integration: Increment Revision State / Approve of opened Documents: due to a regression introduced with the fix "20170302 - SolidWorks Integration: due to a bug in the SolidWorks API, when editing the Data Form with the model being currently opened in SolidWorks, the Properties for the Model were correctly updated, but SolidWorks is no longer marking the currently opened model as 'dirty', so it was possible to close the Model without any alert for saving it before closing - DBWorks marks now as 'dirty' the model as soon as it updates any Property", a Read-Only Notification Dialog was displayed for each document being approved, if already opened in the SolidWorks working space
- 20170906 - PARENT_CHILD_INSTANCE_ID: in some cases it was lost during the save of an Assembly
- 20170906 - DBWACLServer: a Global Parameters Path sub-directory, used as shared file archive (even if not recommended), was not considered as a valid one for DBWACLServer to perform synchronization between server and client machines
- 20170905 - Static Preview: in the Document Page the Refresh button on the button bar caused the current preview to be blank
- 20170905 - OnRevisionOutputFilesCreated.LST: the @EXCEL_BOM_OUTPUT_FILE_NAME passed to the script was always with extension .XLS, even if the .XLSX extension was choosen for creating the Excel BOM
- 20170905 - DBWArm: Project⇌User Assignment: Browser: Tree of a selection of Projects: when creating a new Project, the Project was not displayed in the Tree User Interface until a restart of the PDM
- 20170904 - Browser: Grids: when double-clicking on an header for sorting the grid's data, any column resizing was lost
- 20170901 - DBWArm: with the Options->DBWArm->[X] Limit Access to Documents not belonging to assigned DBWARM Projects, an error was happening when running scripts under some particular conditions

- 20170901 - DBWShell("FileUnZip"): an application hang was happening when extracting a file already existent in the output folder path
- 20170831 - Projects Documents Manager: a user could move document across projects that had not been assigned to him/her
- 20170828 - Master Drawing Mode: working with configurations, the RMB functionality "Working Set->Copy Master Drawings file names to the clipboard" was copying only the 1st master drawing for each configuration to the clipboard
- 20170825 - DBWArm: it is fixed a problem of wrong user detection (a message box was displayed) based on domain names
- 20170824 - DBWShell("Rename ... CHECK") in case of generic documents, it is fixed a problem of actual rename in case of extension changes (the CHECK mode was ignored)
- 20170824 - Variant Notes: due to a regression introduced in R17, it is fixed a problem of incorrect date format when using database fields of type DATETIME
- 20170823 - DBSolidEdge: with the *Options->Revision->[] Never Open Documents on Recursive Checkin/Approve Operations* unchecked, it is fixed a problem of drawing documents not updated correctly on recursive Checkin

Service Pack: 0.0 Build: 20170811

Bugs fixing

- 20170619 - Revisions: Recursive Approval: Drawings, with secondary Views of Assemblies of the Main Document Part, were marked as 'dirty' after a Recursive Approve of any of the Assemblies in a secondary View
- 20170518 - Preview of PNG files: the transparency was not correctly rendered in the Preview Window